

# *If... Then: Population Trends and Transitions*

Poudre School District

February 20, 2024

State Demography Office, Department of Local Affairs

[Demography.dola.colorado.gov](http://Demography.dola.colorado.gov)



**COLORADO**  
Department of Local Affairs



# *Population Trends*

- Population growing at a slowing rate - births down, deaths up
- Migration and mobility slowing
  - Harder to attract and retain labor force
- Concentrated growth
- Aging - impacts everything
  - Largest share of future growth is the 65+
  - Prime working age and youth becoming smaller share of total pop
- Increasing racial and ethnic diversity



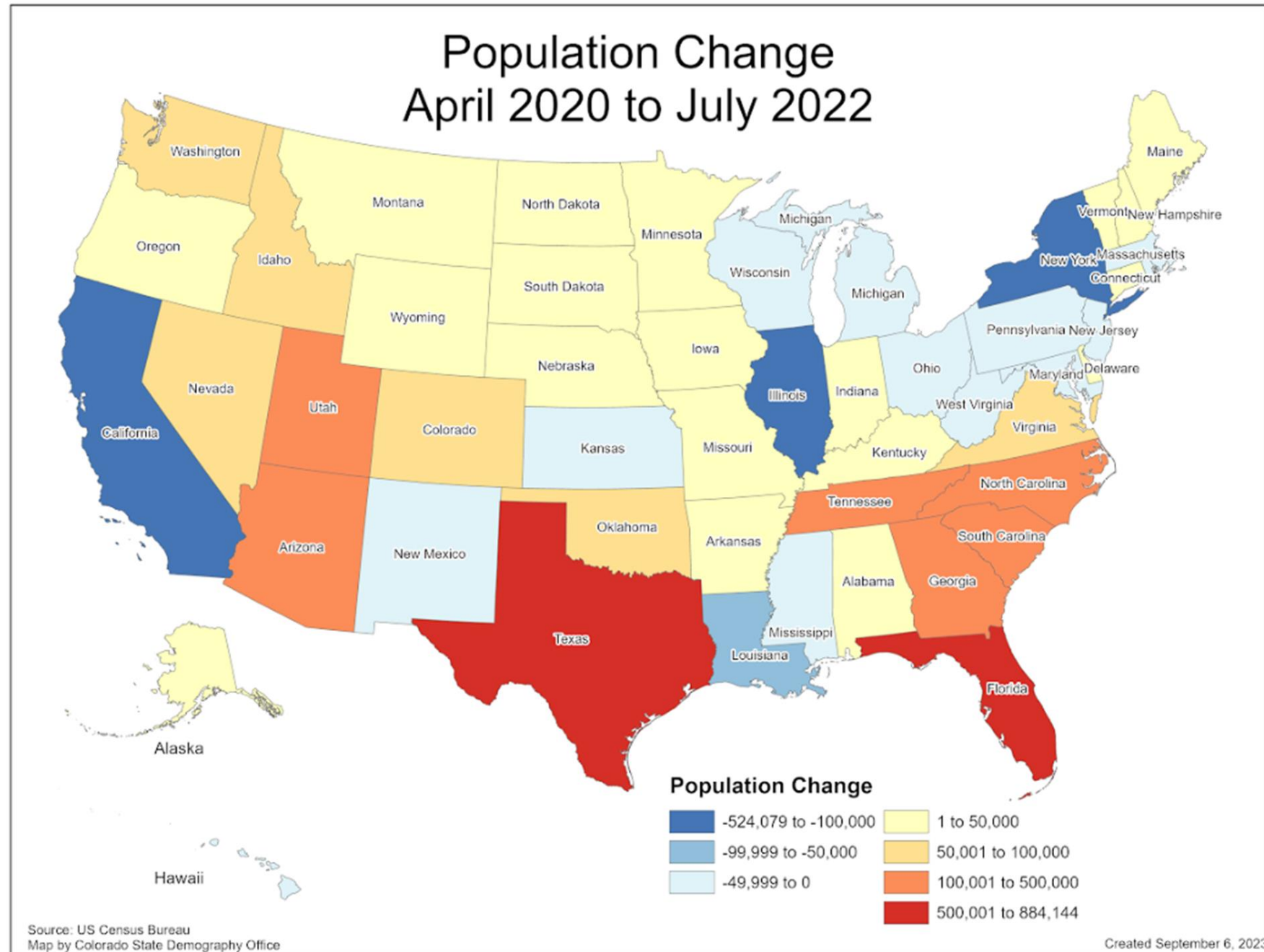
# Big Picture: Growth is Slowing

## United States

- Growth rate 0.6%
- 18 states lost population

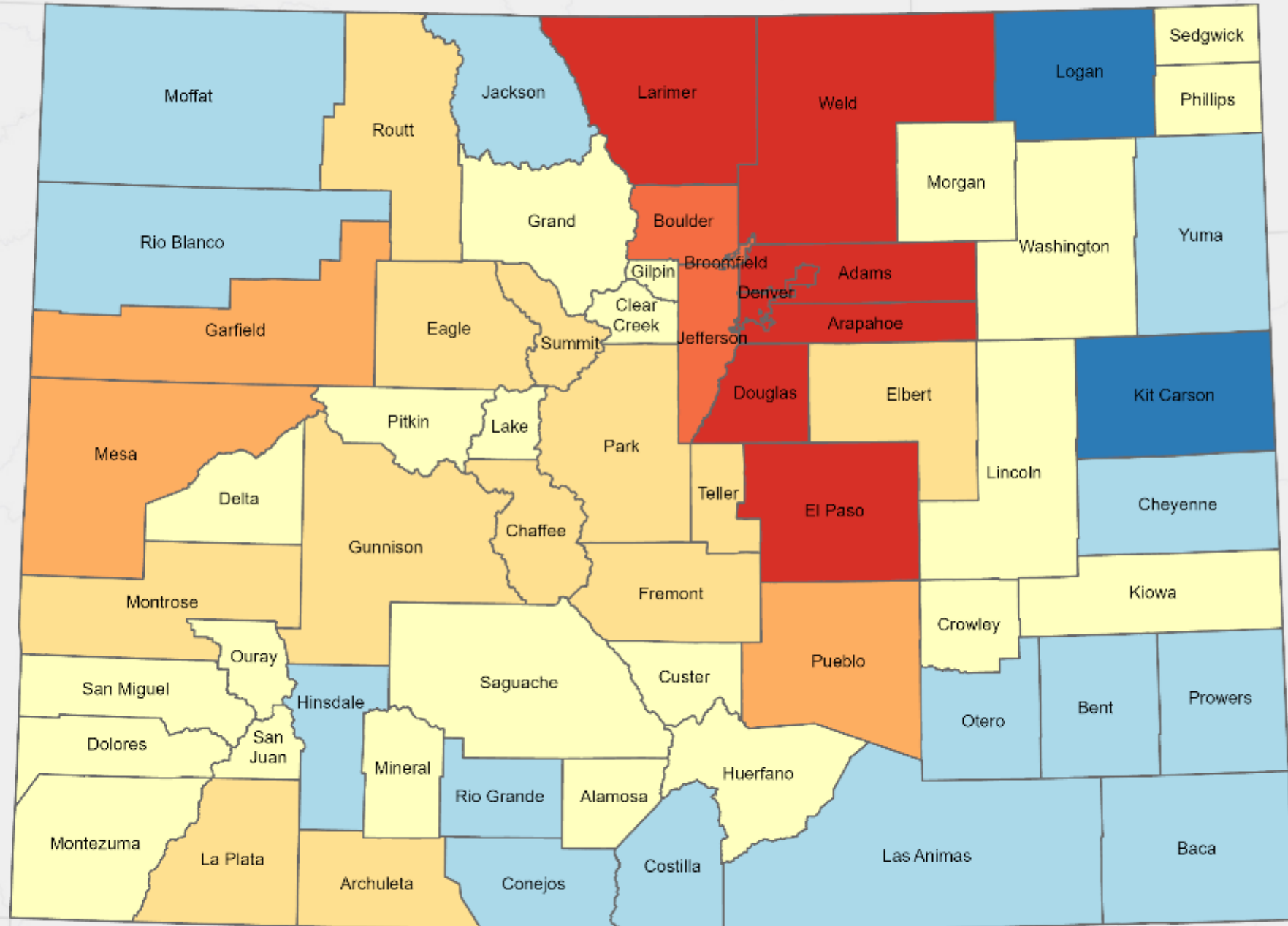
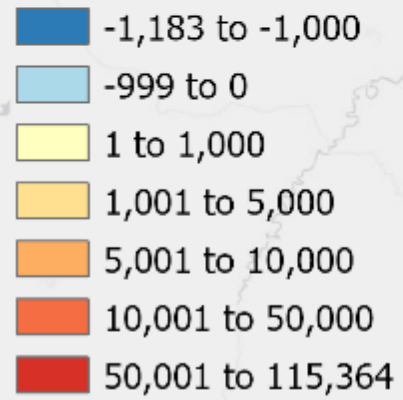
## Colorado

- Increased by 66,193
- 1.1% growth rate
- Ranked 12<sup>th</sup> in total growth
- Ranked 18<sup>th</sup> in percent growth



# Population Change by County 2010 to 2020

## Population Change



Source: 2020 US Census

Esri, HERE, Garmin, USGS, EPA, NPS



**COLORADO**  
Department of Local Affairs

Source: U.S. Census Bureau, 2010 and 2020 Decennial Censuses

# 2022 County Population Rankings

## Population Growth (2021-2022)

1	WELD COUNTY	10,341
2	DOUGLAS COUNTY	6,268
3	ADAMS COUNTY	4,084
4	LARIMER COUNTY	4,069
5	EL PASO COUNTY	3,350

## Percent Growth (2021-2022)

1	SAN JUAN COUNTY	8.1%
2	CUSTER COUNTY	5.4%
3	DOLORES COUNTY	3.9%
4	WELD COUNTY	3.0%
5	CHAFFEE COUNTY	2.7%

## Largest by Population 2022

1	EL PASO COUNTY	740,552
2	DENVER COUNTY	712,637
3	ARAPAHOE COUNTY	656,015
4	JEFFERSON COUNTY	575,936
5	ADAMS COUNTY	527,501
6	DOUGLAS COUNTY	376,026
7	LARIMER COUNTY	366,843
8	WELD COUNTY	350,206
9	BOULDER COUNTY	327,424
10	PUEBLO COUNTY	169,383
11	MESA COUNTY	158,534
12	BROOMFIELD COUNTY	76,155



# 2022 Municipal Population

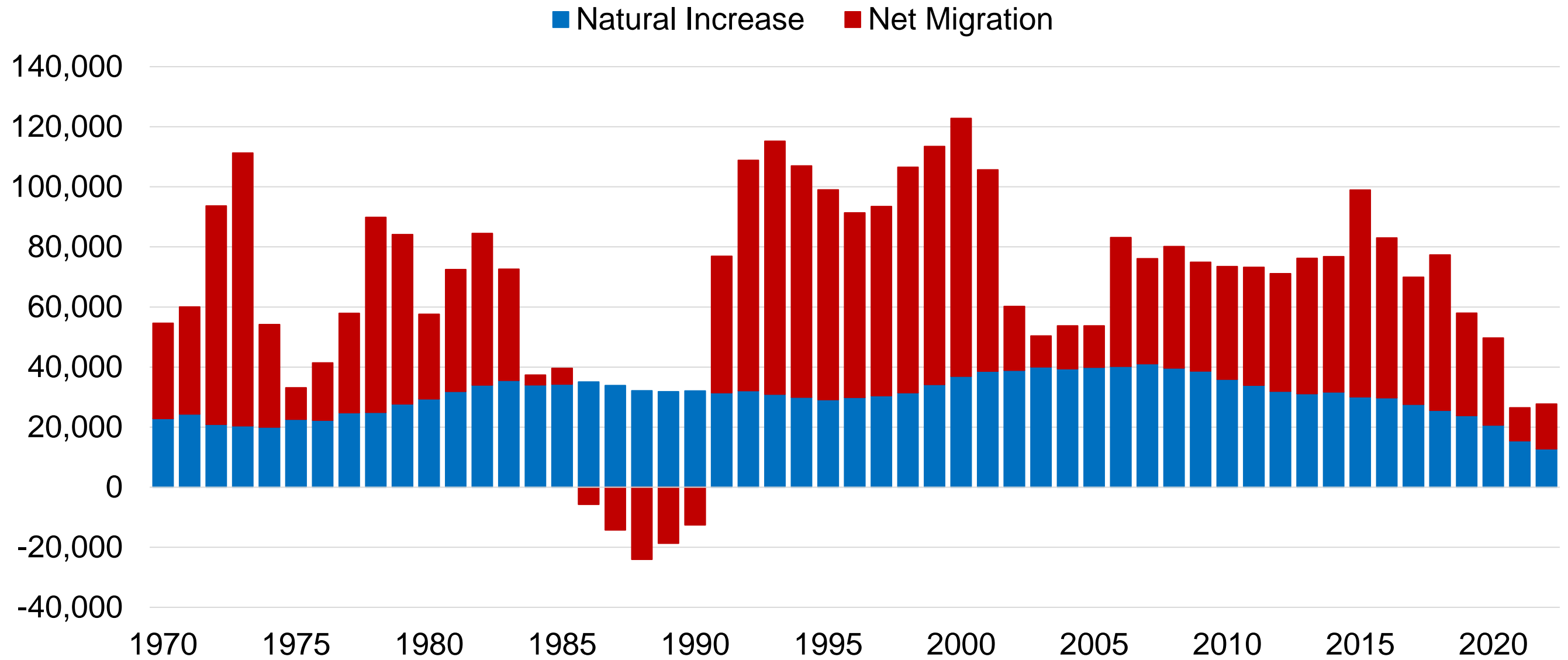
Area	July 2010	July 2020	July 2022	Change 2010 to 2020	Change 2020 to 2022	% Change 2010 to 2020	% Change 2020 to 2022
LARIMER COUNTY	300,532	359,920	366,843	59,388	6,923	19.8%	1.9%
Fort Collins	144,461	170,036	171,848	25,575	1,812	17.7%	1.1%
Wellington	6,295	11,145	11,624	4,850	479	77.0%	4.3%
Timnath (Part)	625	6,741	7,909	6,116	1,168	978.6%	17.3%
Unincorp. Area	65,976	66,845	66,835	869	-10	1.3%	0.0%
Berthoud (Part)	5,040	10,254	11,316	5,214	1,062	103.5%	10.4%
Estes Park	5,865	5,887	5,920	22	33	0.4%	0.6%
Johnstown (Part)	624	4,784	5,237	4,160	453	666.7%	9.5%
Loveland	67,000	76,384	77,913	9,384	1,529	14.0%	2.0%
Windsor (Part)	4,646	7,844	8,241	3,198	397	68.8%	5.1%





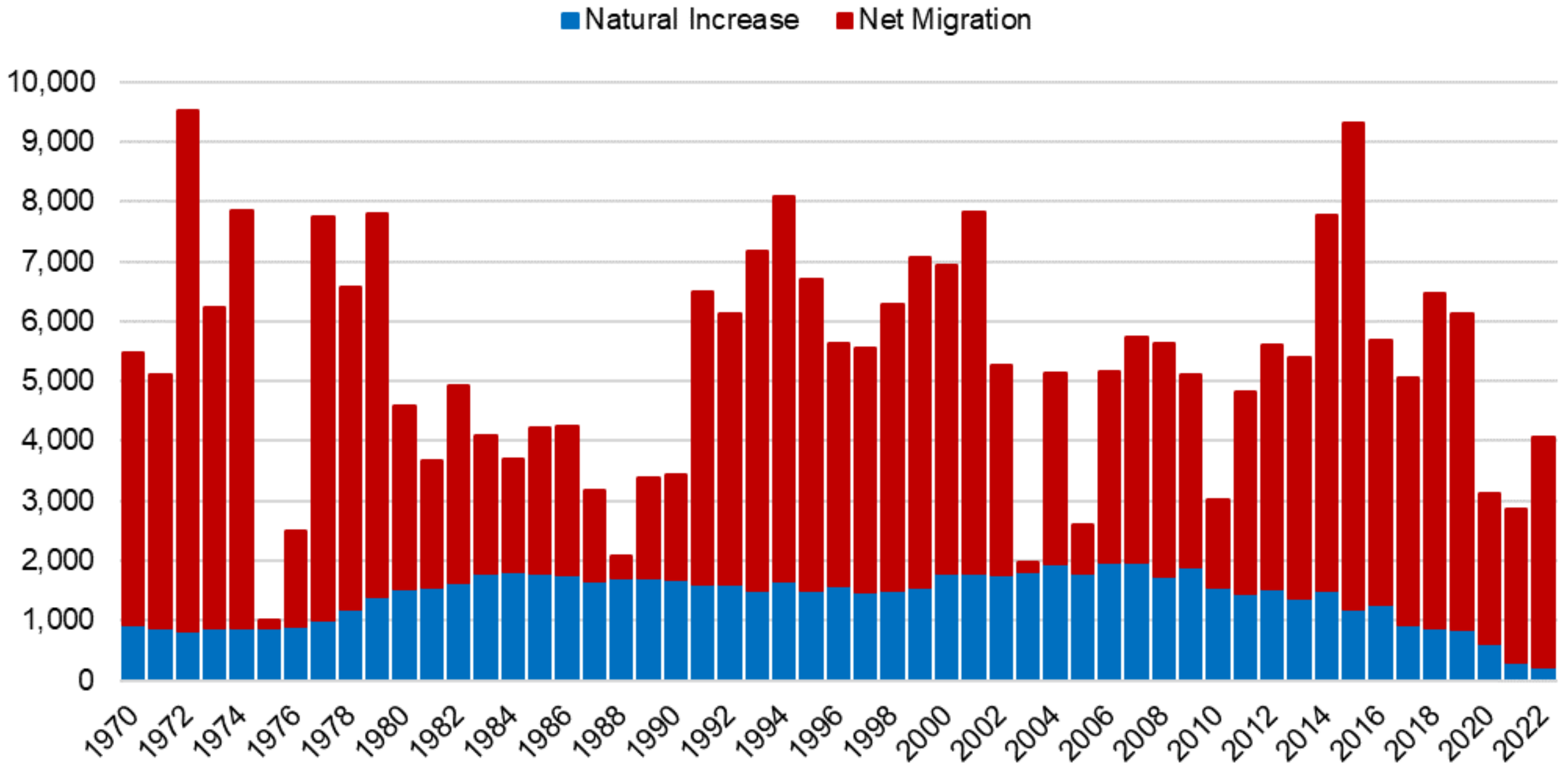
# Annual Population Change

## Colorado



# Annual Population Change

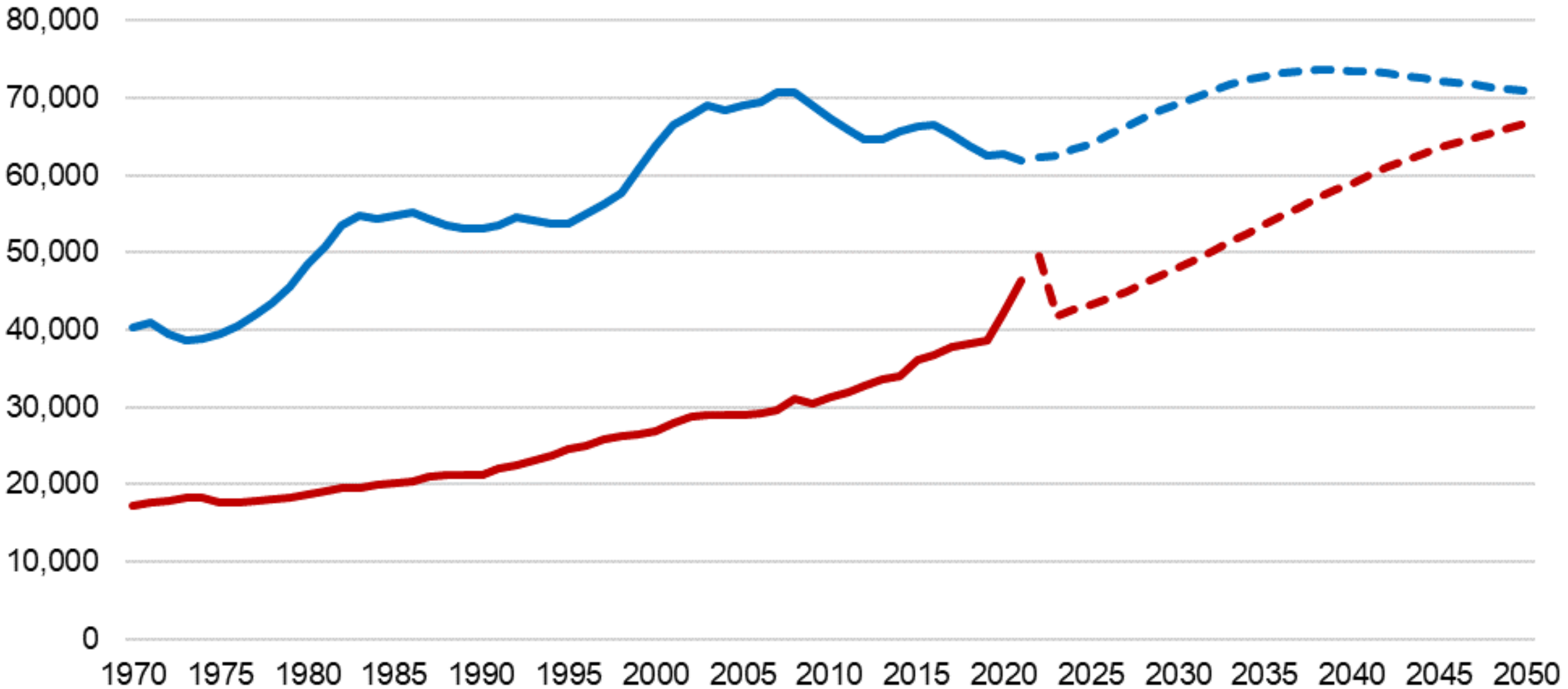
## Larimer County





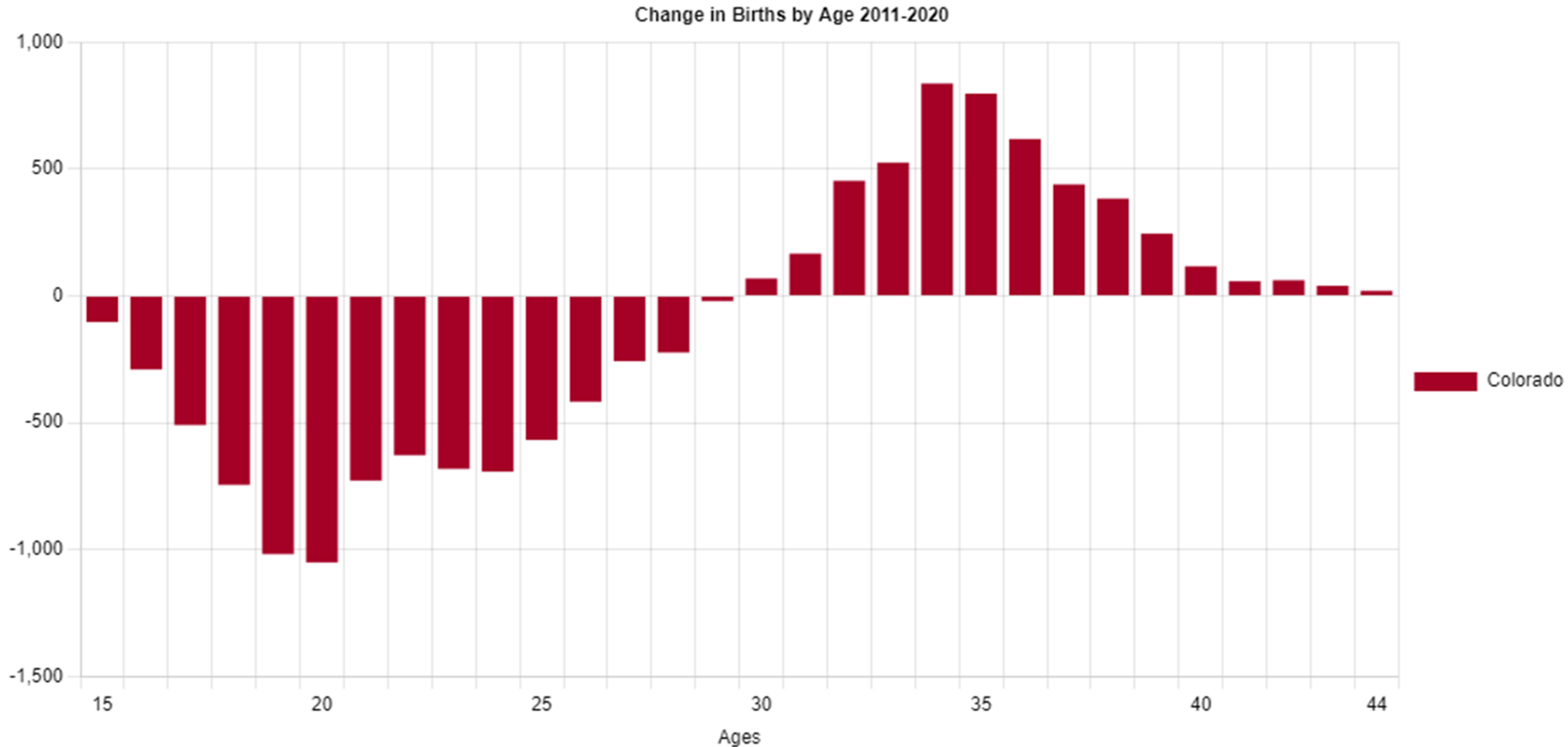
# Colorado Births and Deaths, 1970 to 2050

Births Deaths Births (Projected) Deaths (Projected)



# Change in Births by Age of Mother

## Colorado, 2011-2020

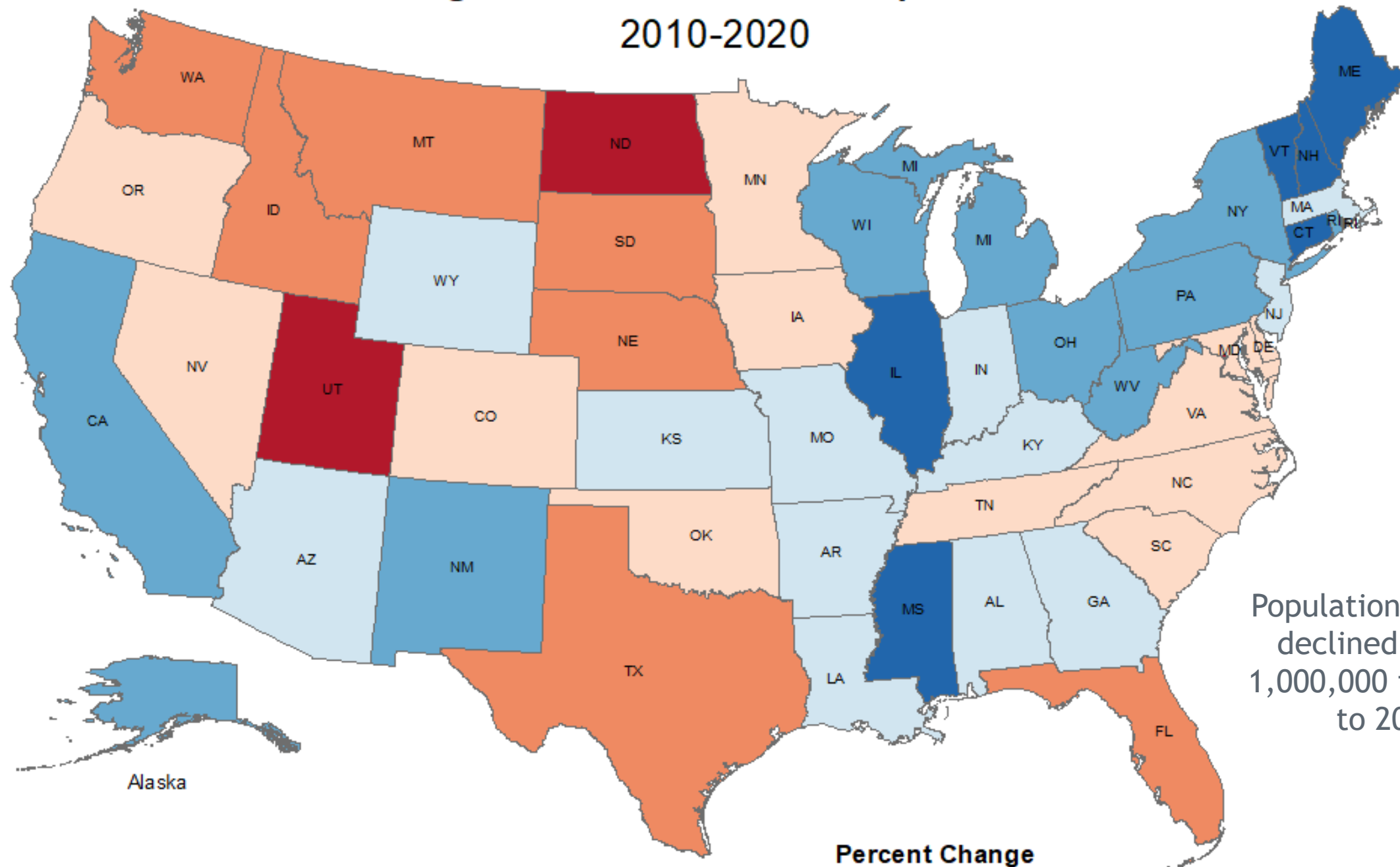


Source: Data and Visualization by Colorado State Demography Office. Print date: October 09, 2023



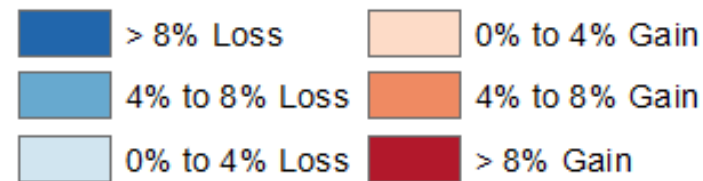
# Change in Under 18 Populations

2010-2020



Population Under 18 declined by over 1,000,000 from 2010 to 2020.

### Percent Change



Source: US Census Bureau  
Map by Colorado State Demography Office

Created October 13, 2021



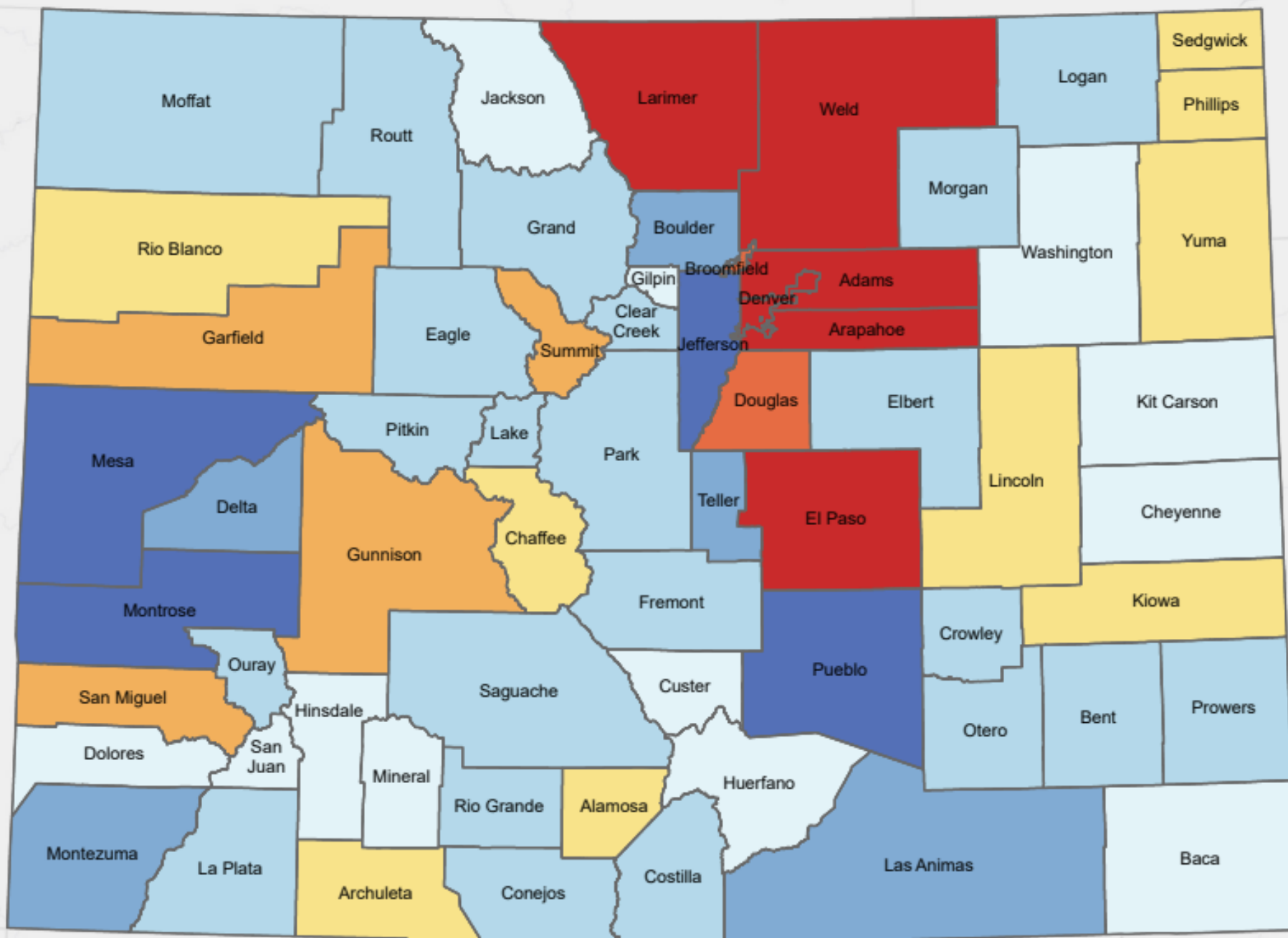
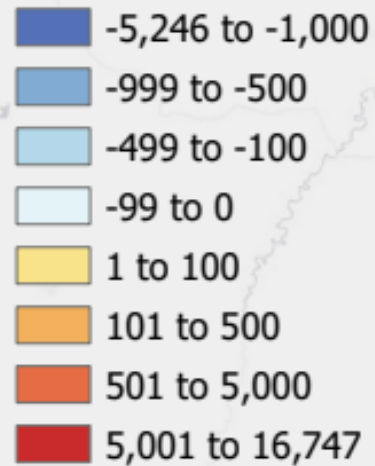
**COLORADO**  
Department of Local Affairs

Source: U.S. Census Bureau, 2010 and 2020 Decennial Censuses



# Under 18 Population Change by County 2010 to 2020

## Population Change



- Population Under 18 increased by 38K over the decade.
- Only 5% of the total 744,518 growth was from the under 18

Source: 2020 US Census

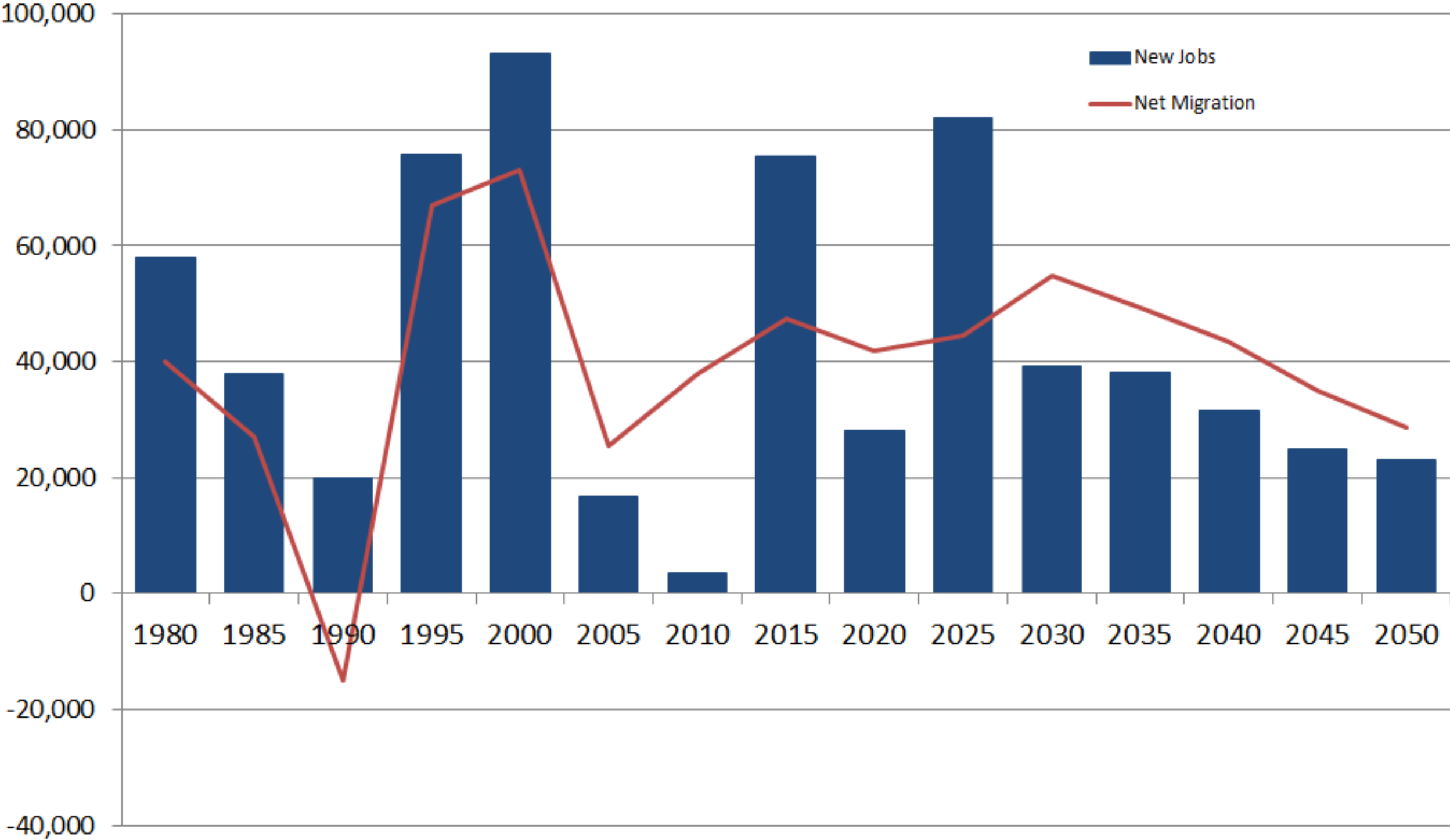
Esri, HERE, Garmin, USGS, EPA, NPS



**COLORADO**  
Department of Local Affairs

Source: U.S. Census Bureau, 2010 and 2020 Censuses

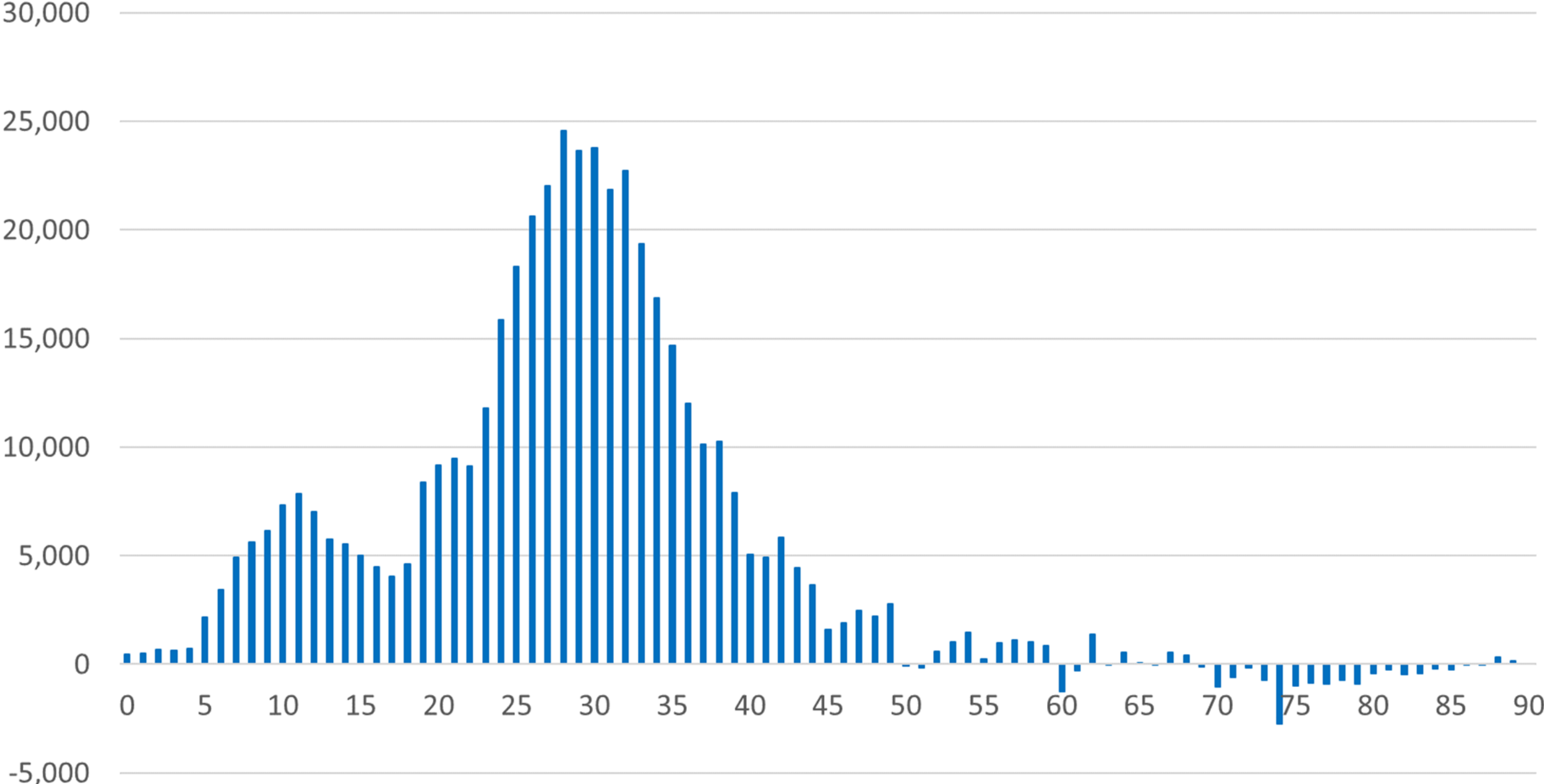
# Colorado New Jobs and Net Migration



## Jobs Are People



Colorado Net Migration By Age, 2010-2020



Colorado attracts early career young adults, families, and university students. Most older adults age in place. Trend has been consistent since the 1970's.





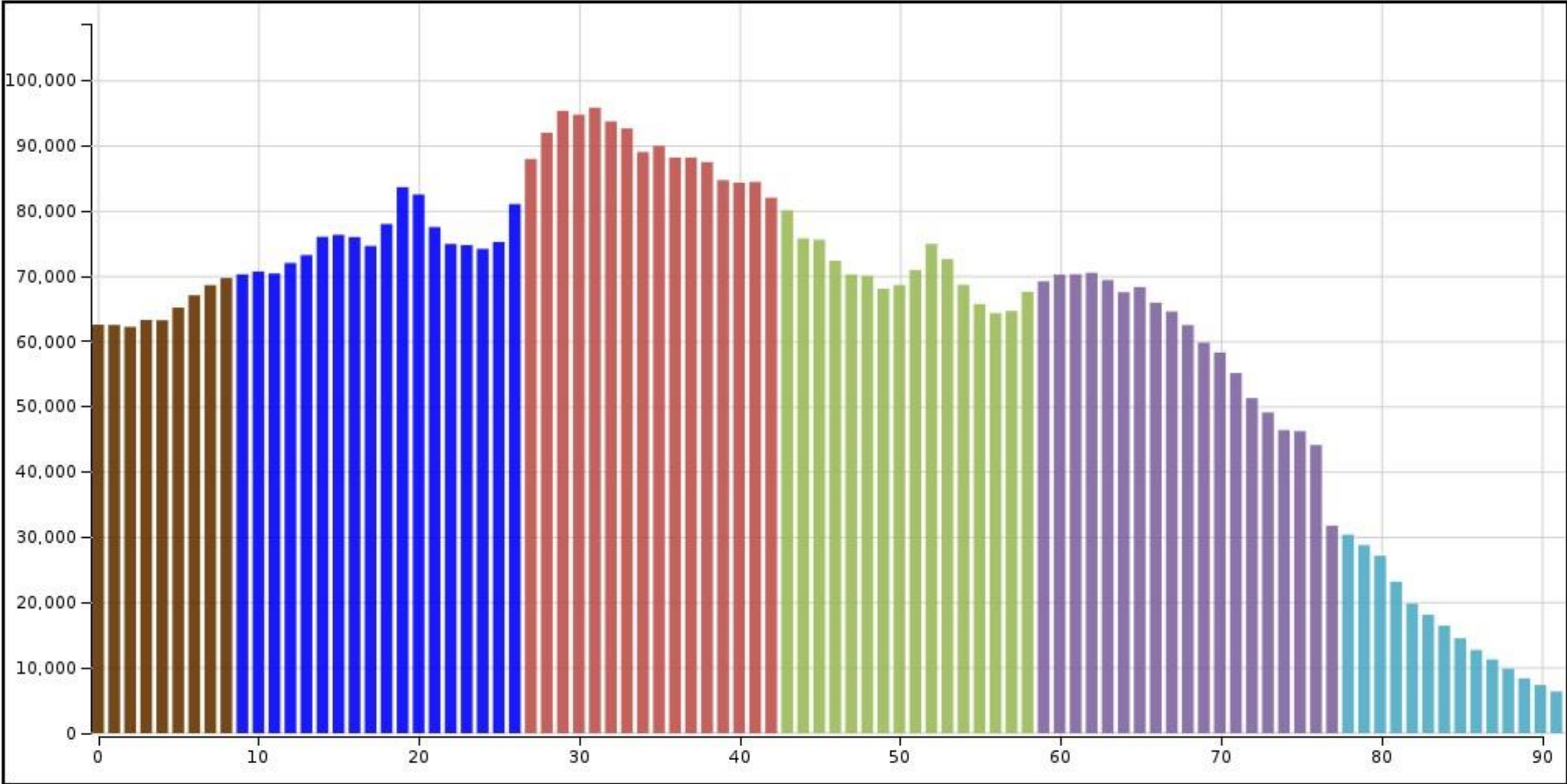
# *Age Matters*

- Preferences - where people shop and what they buy.
- Housing - type, size, mobility
- Labor Force
- Income
- Service Demands



# Colorado

# 2023



- Generation X (1965 - 1980)
- Baby Boomers (1946 - 1964)
- Silent Generation (1928 - 1945)
- Greatest Generation (- 1927)
- Future Generations (2030 -)
- Generation Alpha (2015 - 2029)
- Generation Z (1997 - 2014)
- Millennials (1981 - 1996)



**COLORADO**  
Department of Local Affairs

<https://gis.dola.colorado.gov/Age-Animation-Bars/>

Larimer

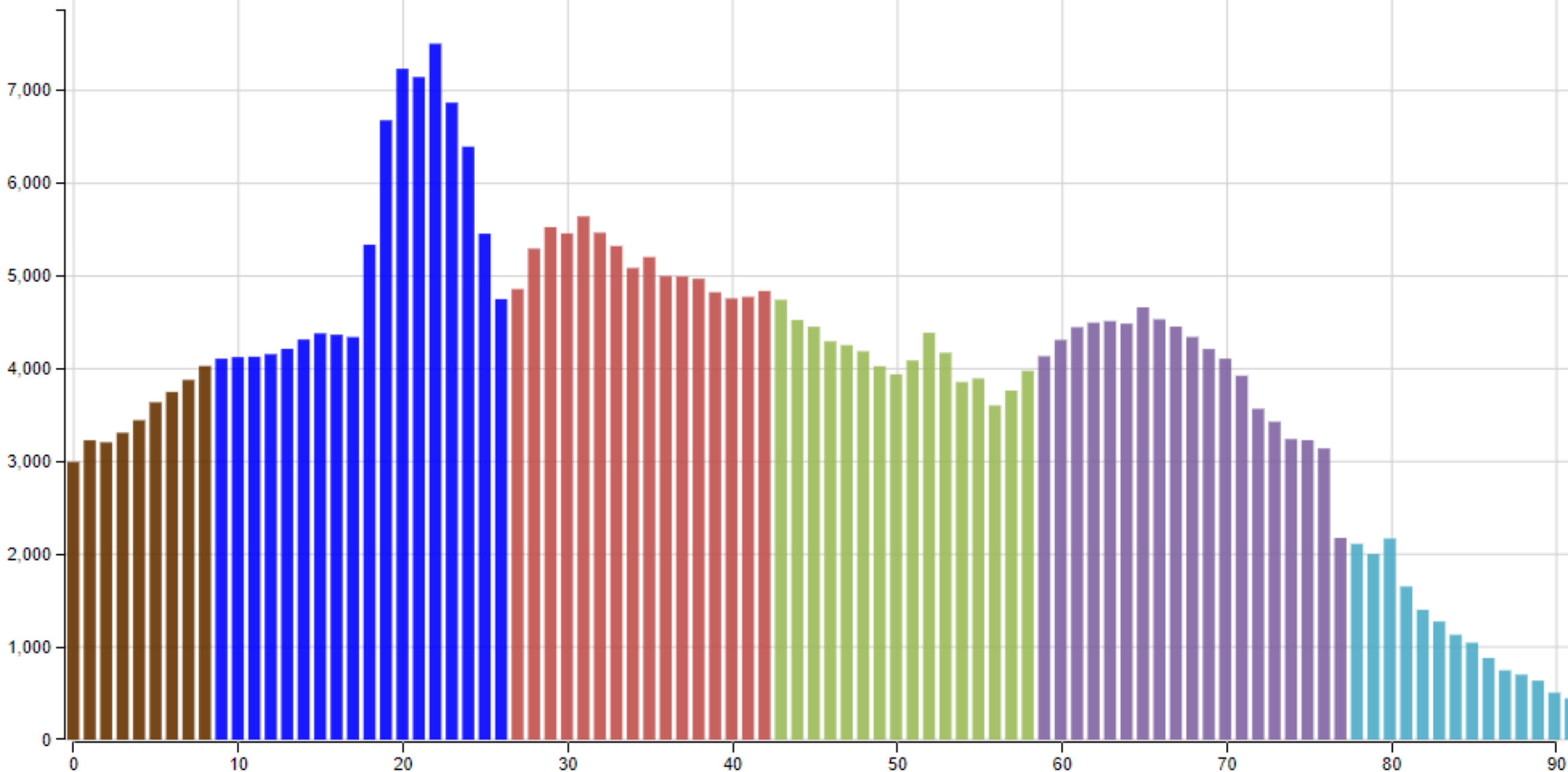
2023

Animate

Download Image

# Larimer County

# 2023



- Generation X (1965 - 1980)
- Baby Boomers (1946 - 1964)
- Silent Generation (1928 - 1945)
- Greatest Generation (- 1927)
- Future Generations (2030 -)
- Generation Alpha (2015 - 2029)
- Generation Z (1997 - 2014)
- Millennials (1981 - 1996)





Larimer

2023

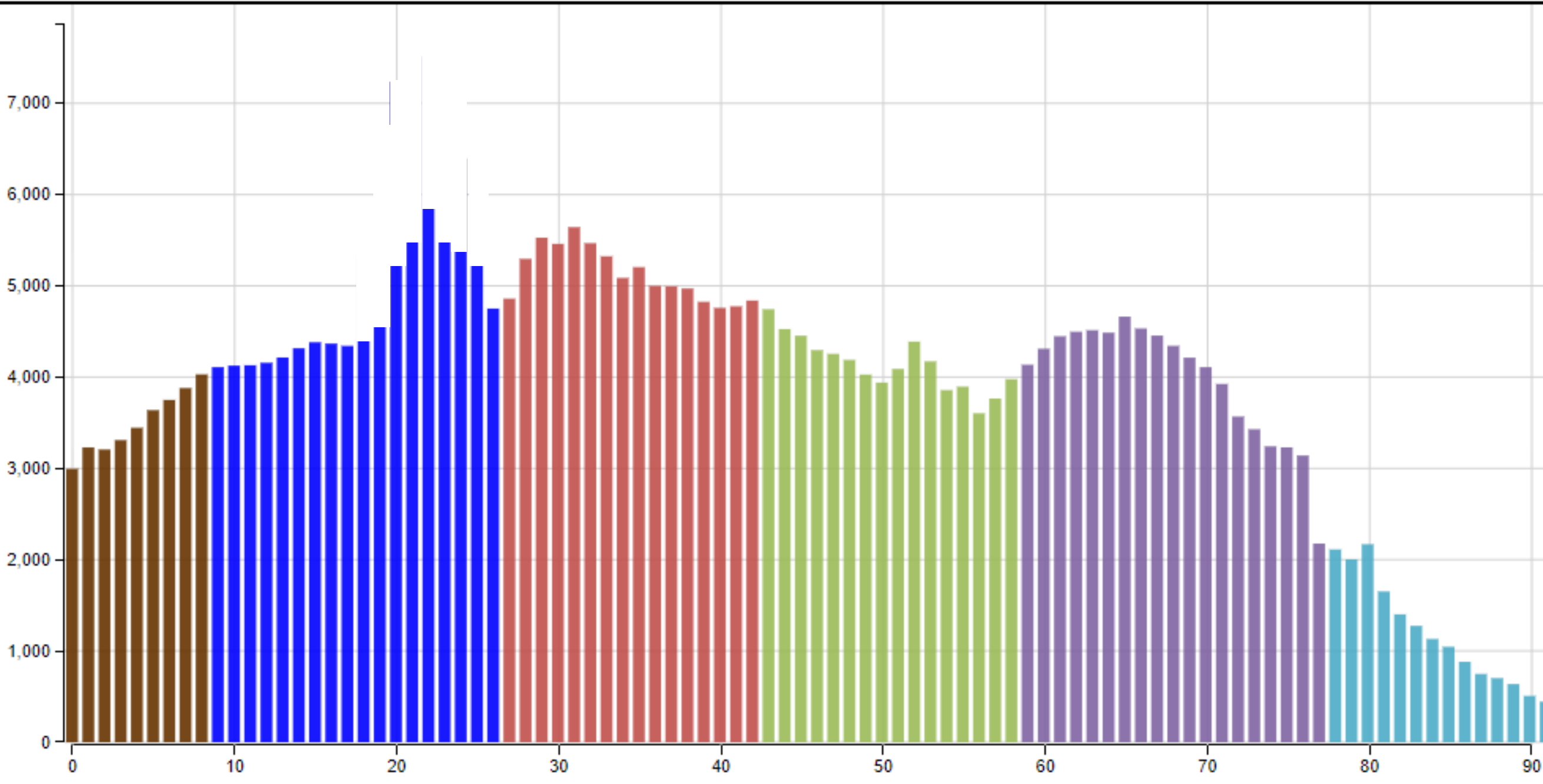
Animate

Download Image

Without Student Population

# Larimer County

# 2023

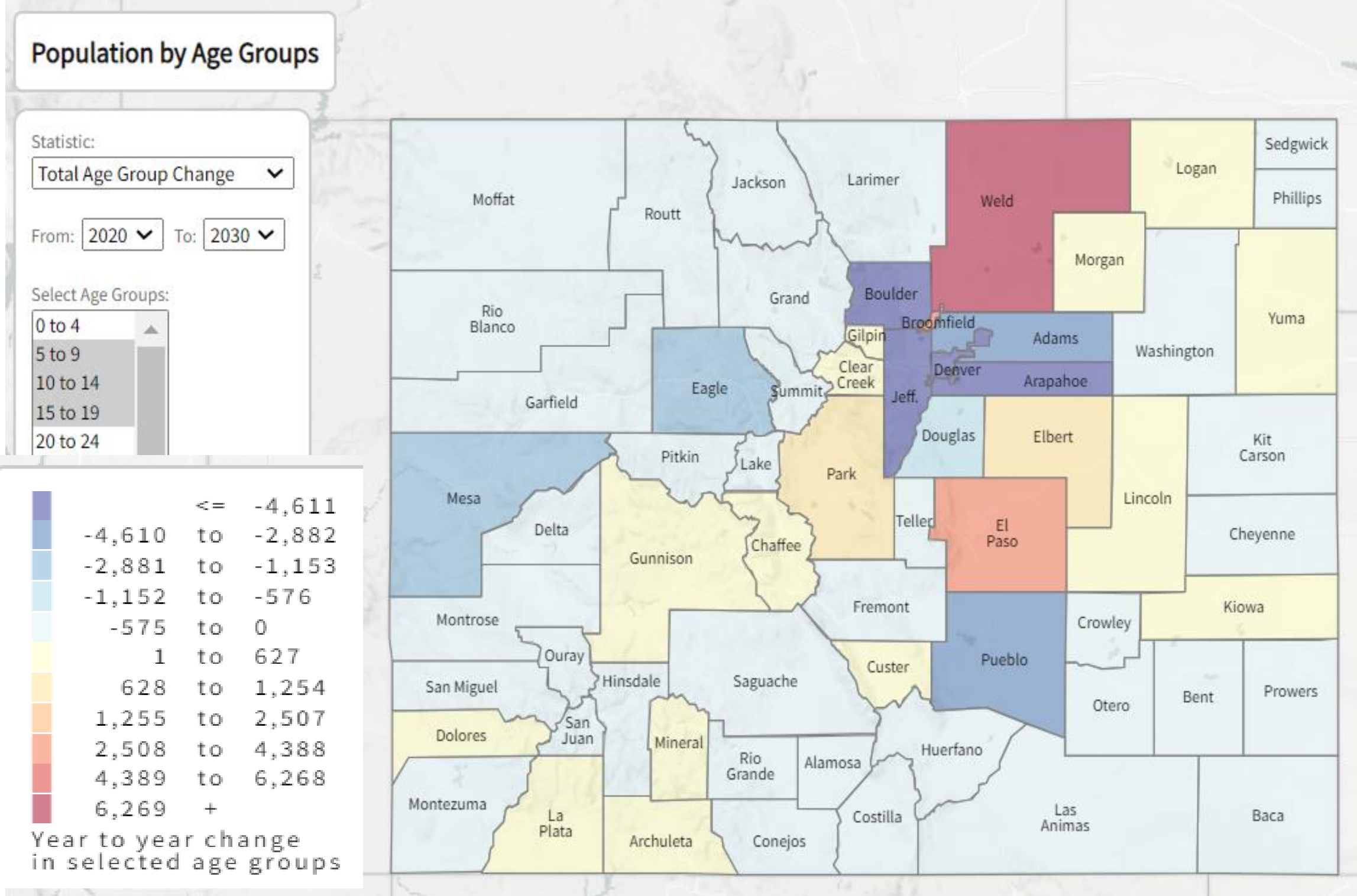


- Generation X (1965 - 1980)
- Baby Boomers (1946 - 1964)
- Silent Generation (1928 - 1945)
- Greatest Generation (- 1927)
- Future Generations (2030 -)
- Generation Alpha (2015 - 2029)
- Generation Z (1997 - 2014)
- Millennials (1981 - 1996)



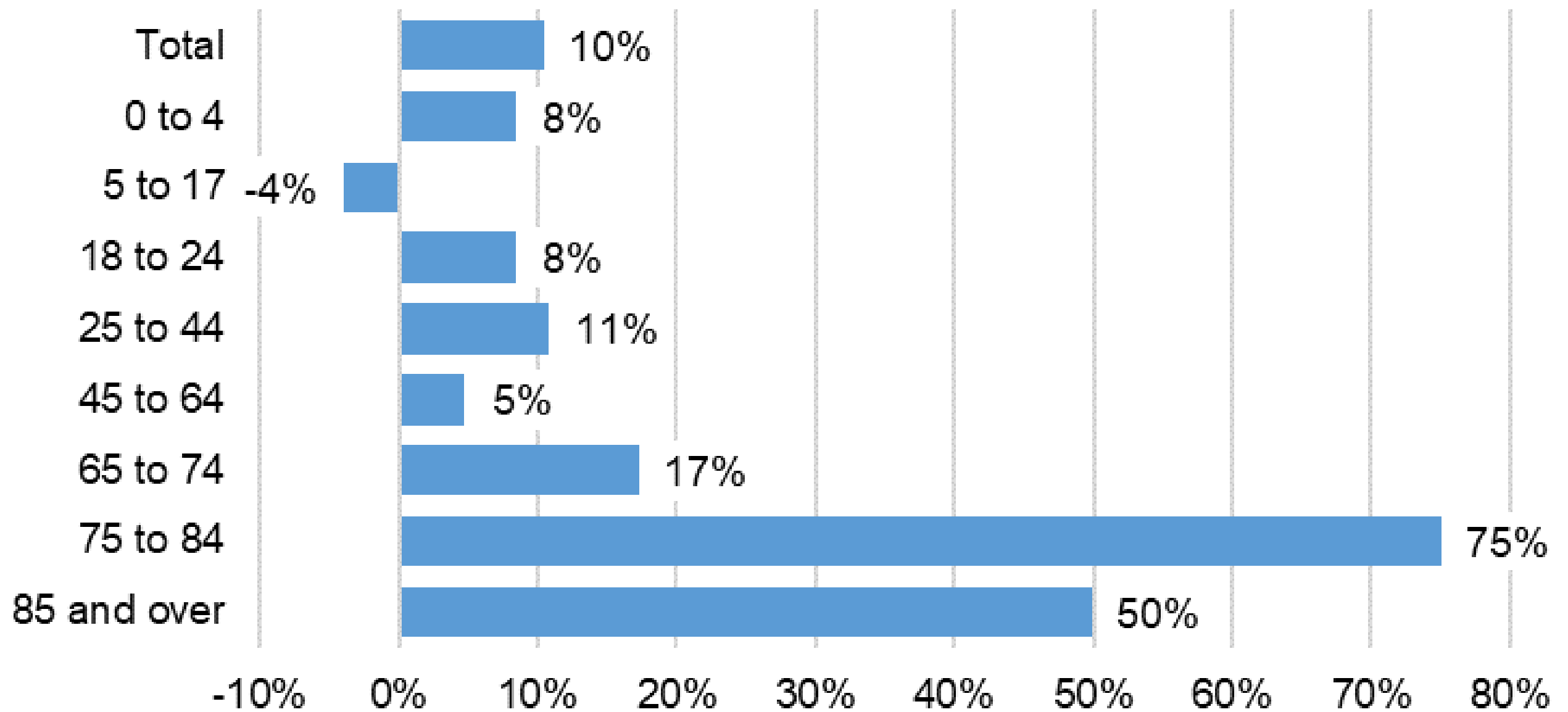
# Change in the School Age Population

2020-2030



# Aging Population 2020-2030

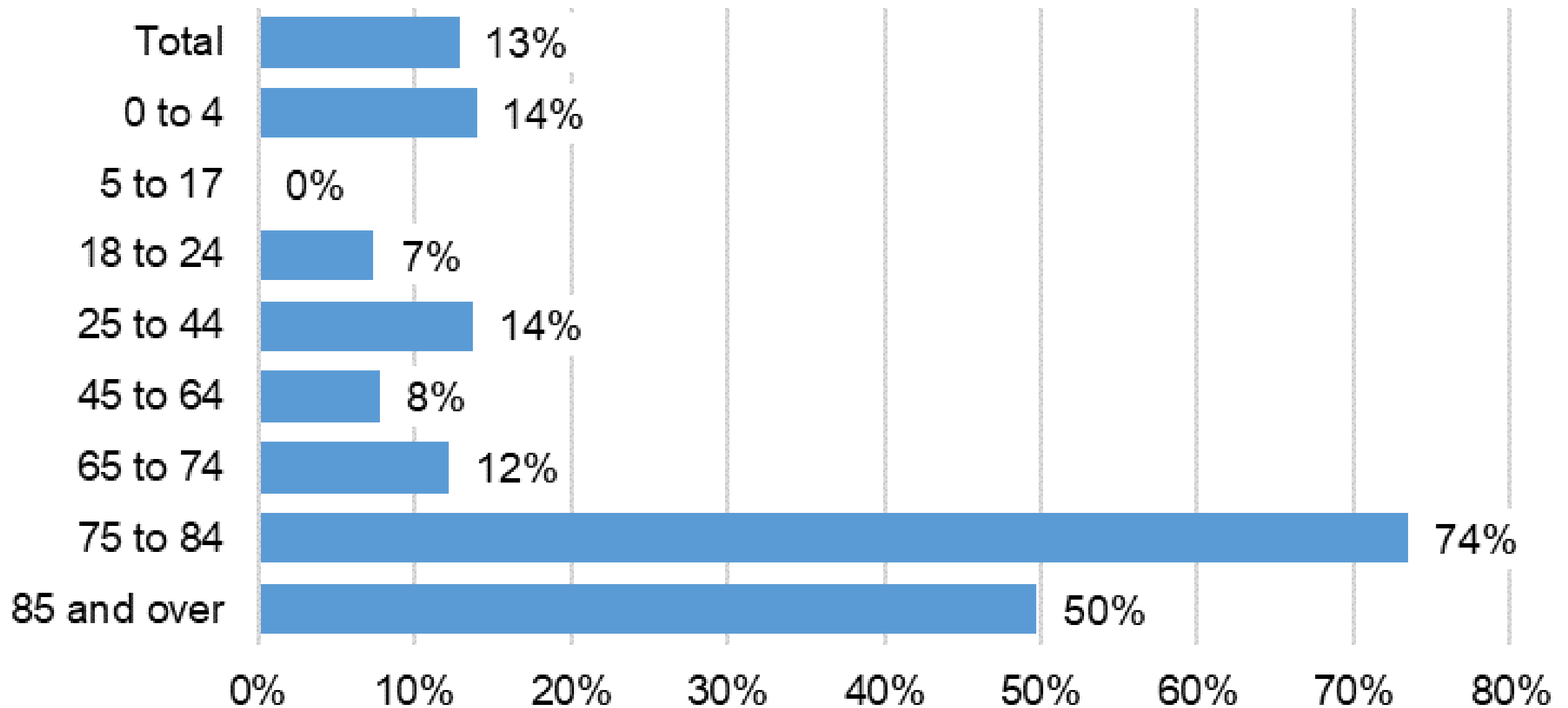
## Projected Percent Change by Age Group - Colorado





# Aging Population 2020-2030

## Projected Percent Change by Age Group - Larimer County



# *Implications From Aging*

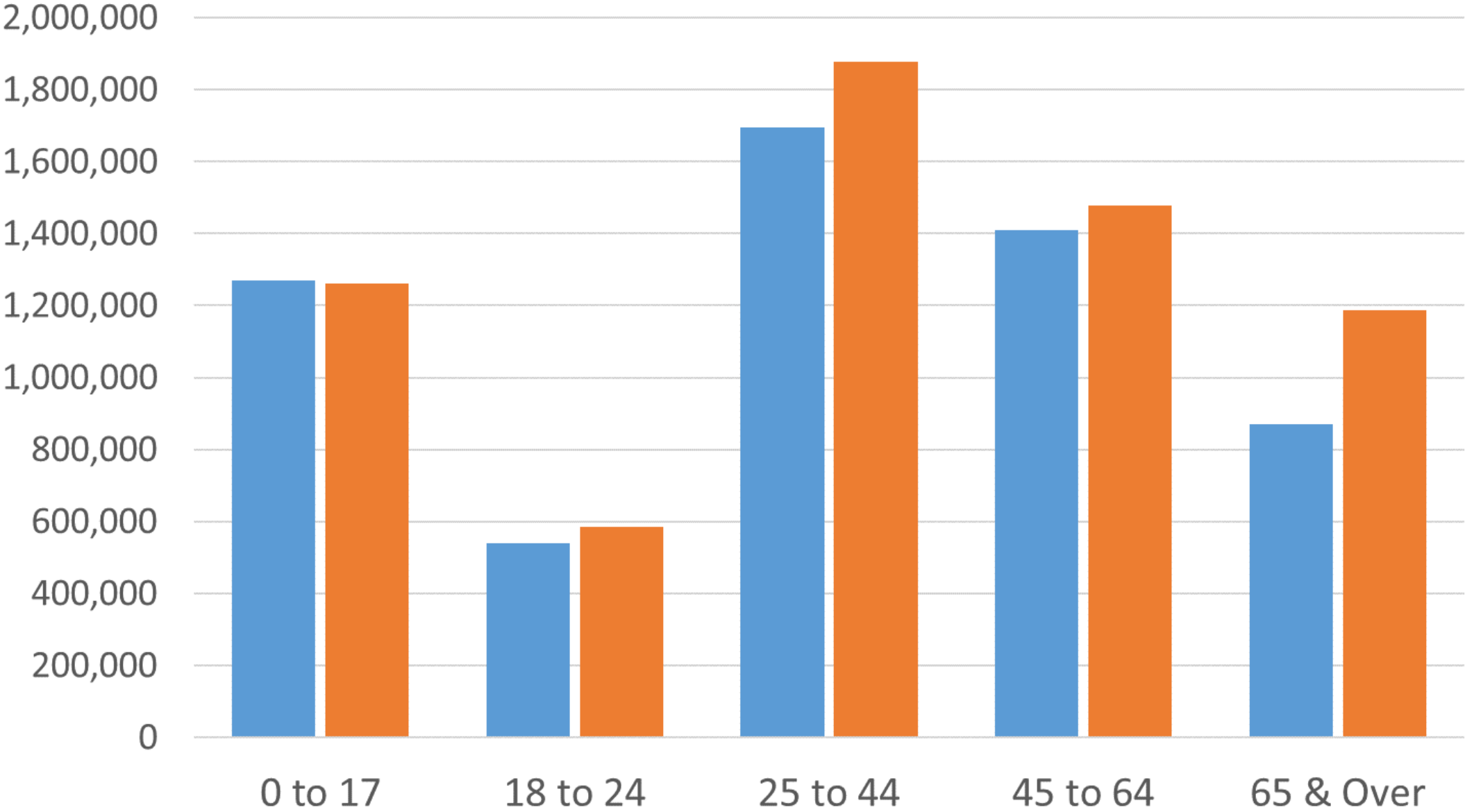
- Labor force, continues to be tight
  - Over the next 5 years 200,000 retirements, assuming increased participation for everyone ages 55+
- Consumer and service demand changes - drive economy
- Housing
  - Older Adults - aging in place and demand from new workers
  - Millennials - aging into prime and second home ownership
  - Gen Z - aging into housing and first time home buying
- Increasing diversity
  - Youngest residents are most diverse



# Colorado Aging

## Colorado Population By Age, 2020 to 2030

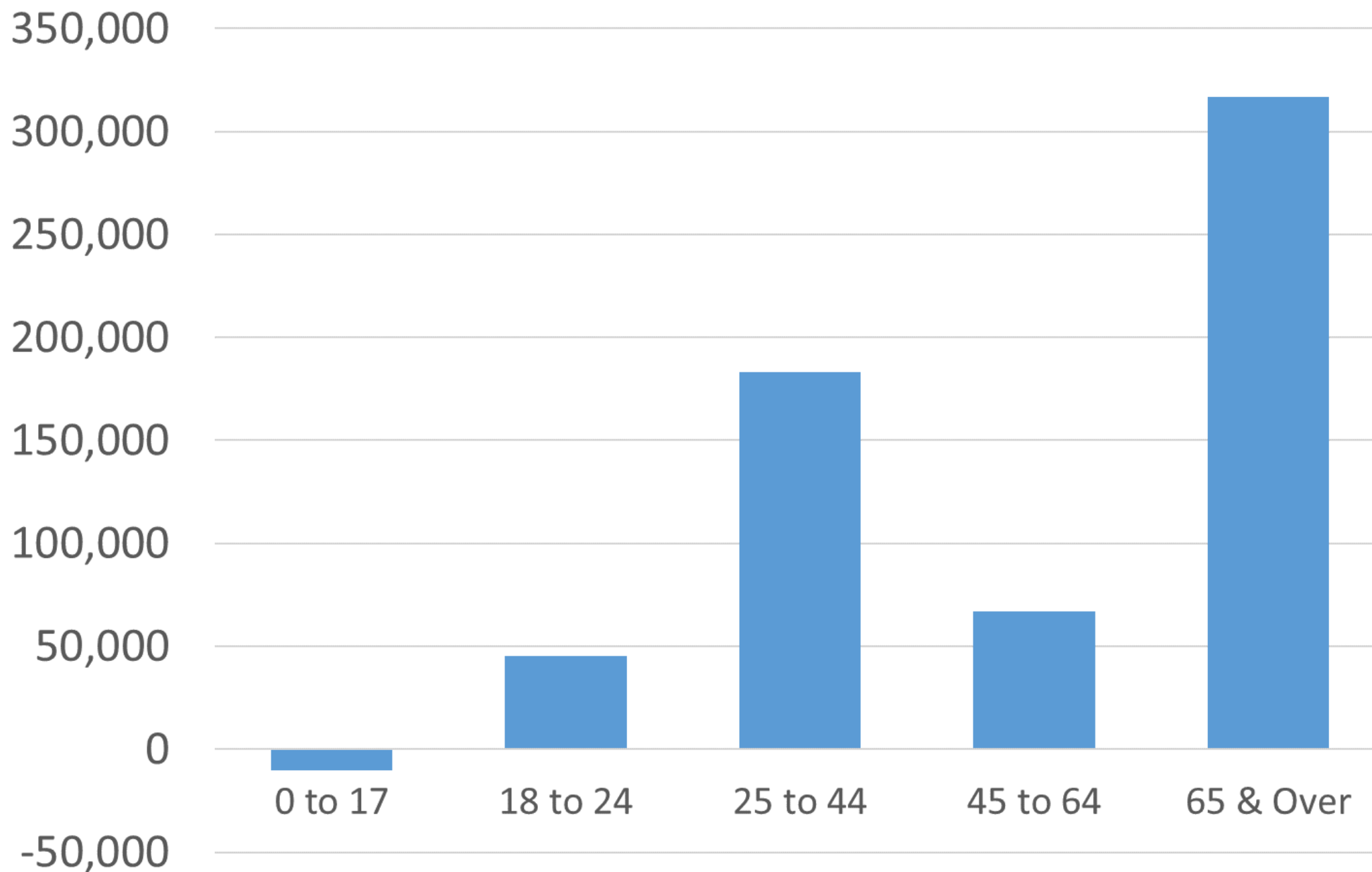
■ 2020 ■ 2030





# Colorado Aging

Colorado Population Change By Age, 2020-2030



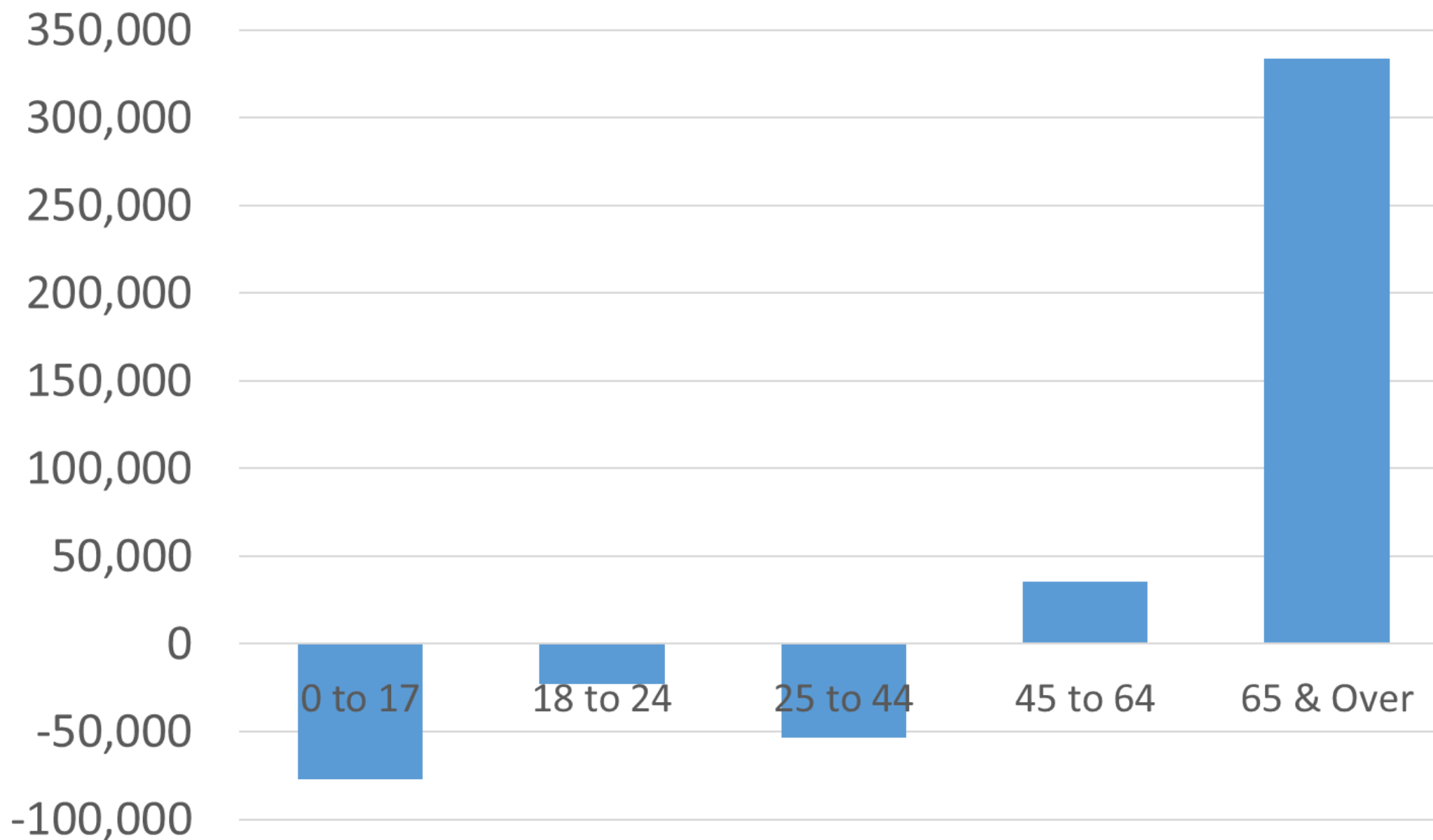
65 & over  
represents 53%  
of total growth

How much of  
the growth in  
each age group  
is due to  
assumed  
migration?



# Colorado Aging

Colorado Population Change By Age,  
With Zero Net Migration, 2020-2030



If we assume no net migration over the next decade in Colorado:

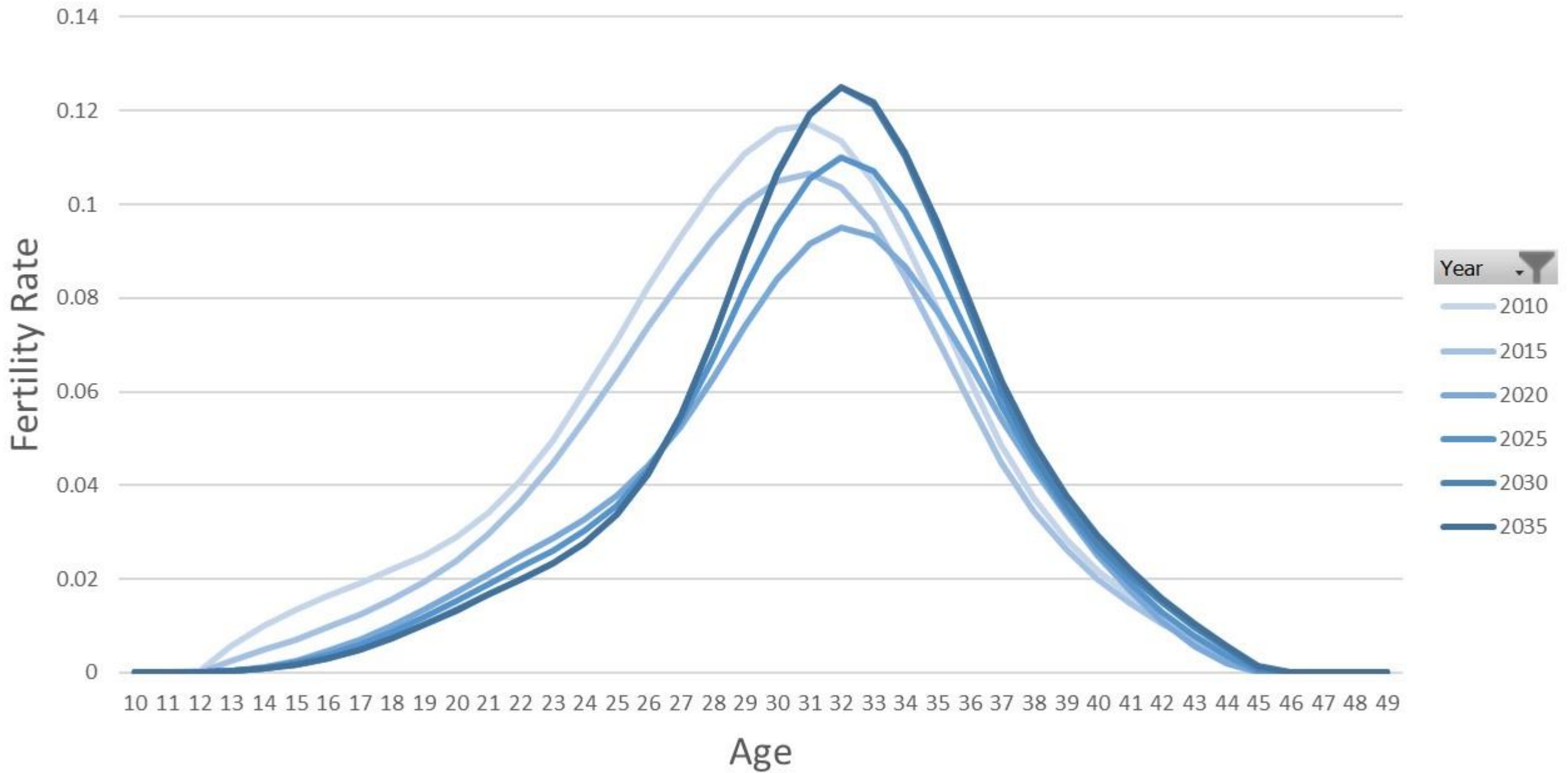
- Statewide decline in the prime working age population
- All population growth could be attributed to the 65 & over population.



# Changes in Fertility Rate

Sum of Larimer

## Larimer County Fertility Rate by Age, 2010 to 2035

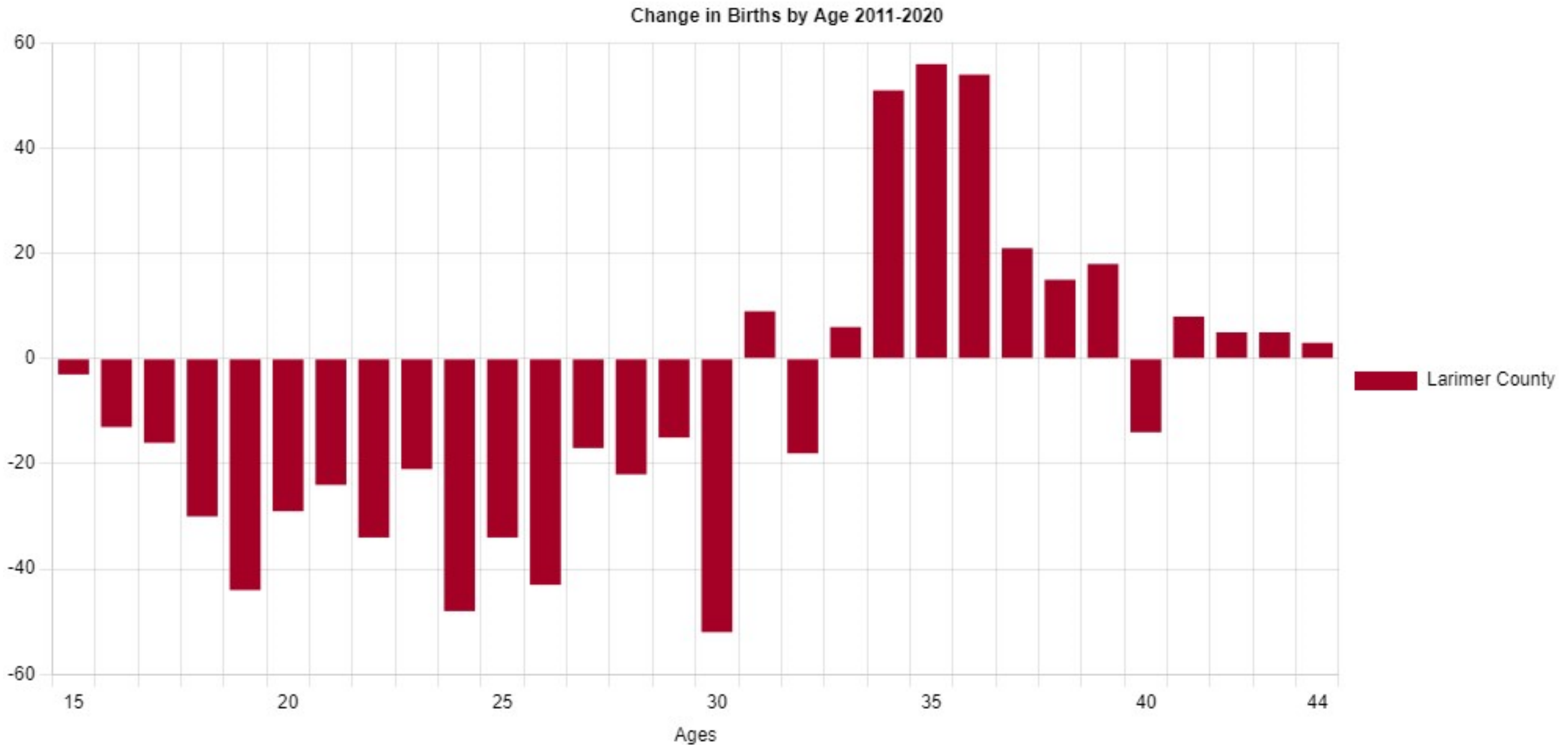


Age ▾



# Change in Births by Age of Mother

## Larimer County, 2011-2020



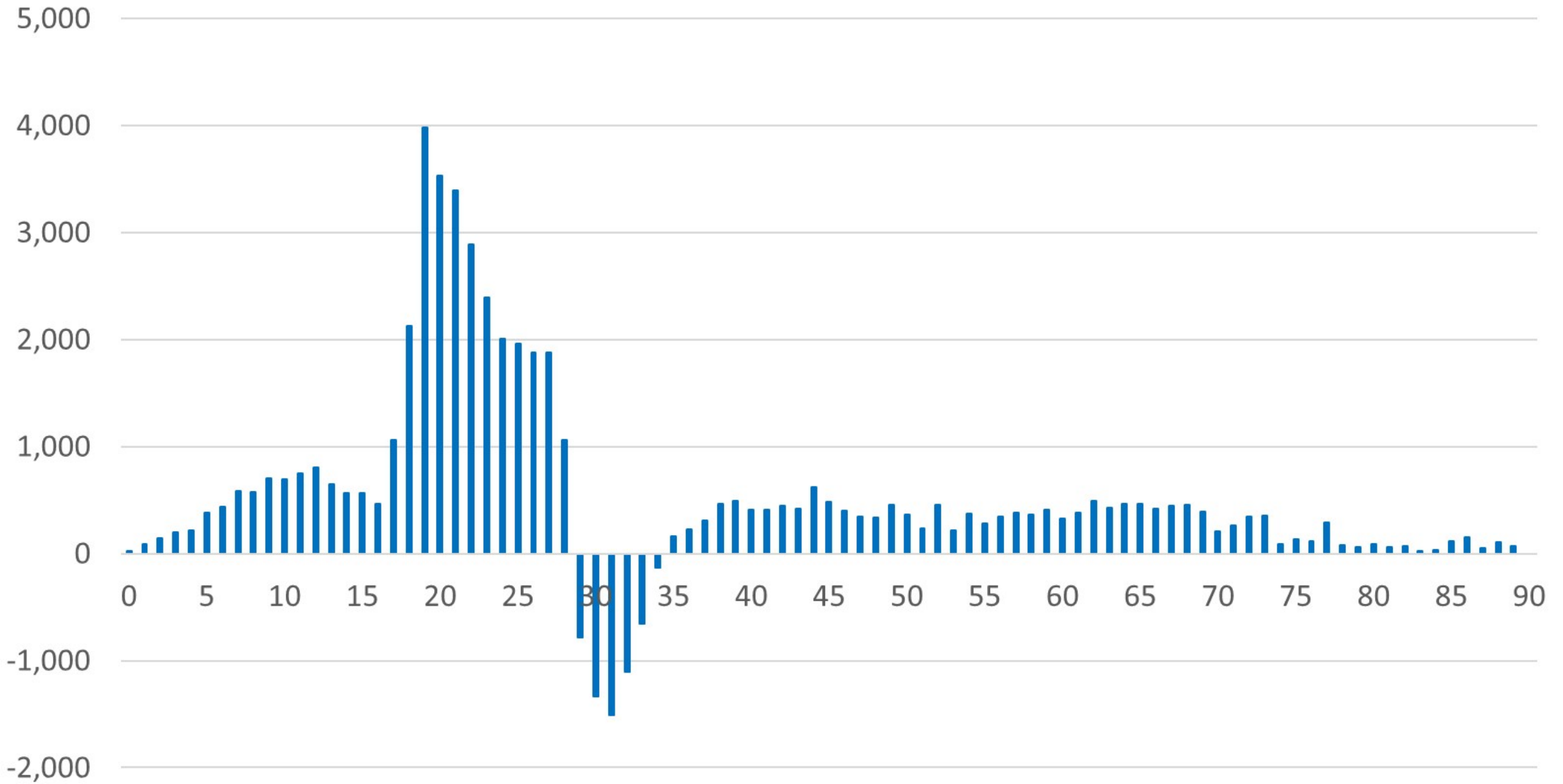
Source: Data and Visualization by Colorado State Demography Office. Print date: November 28, 2023





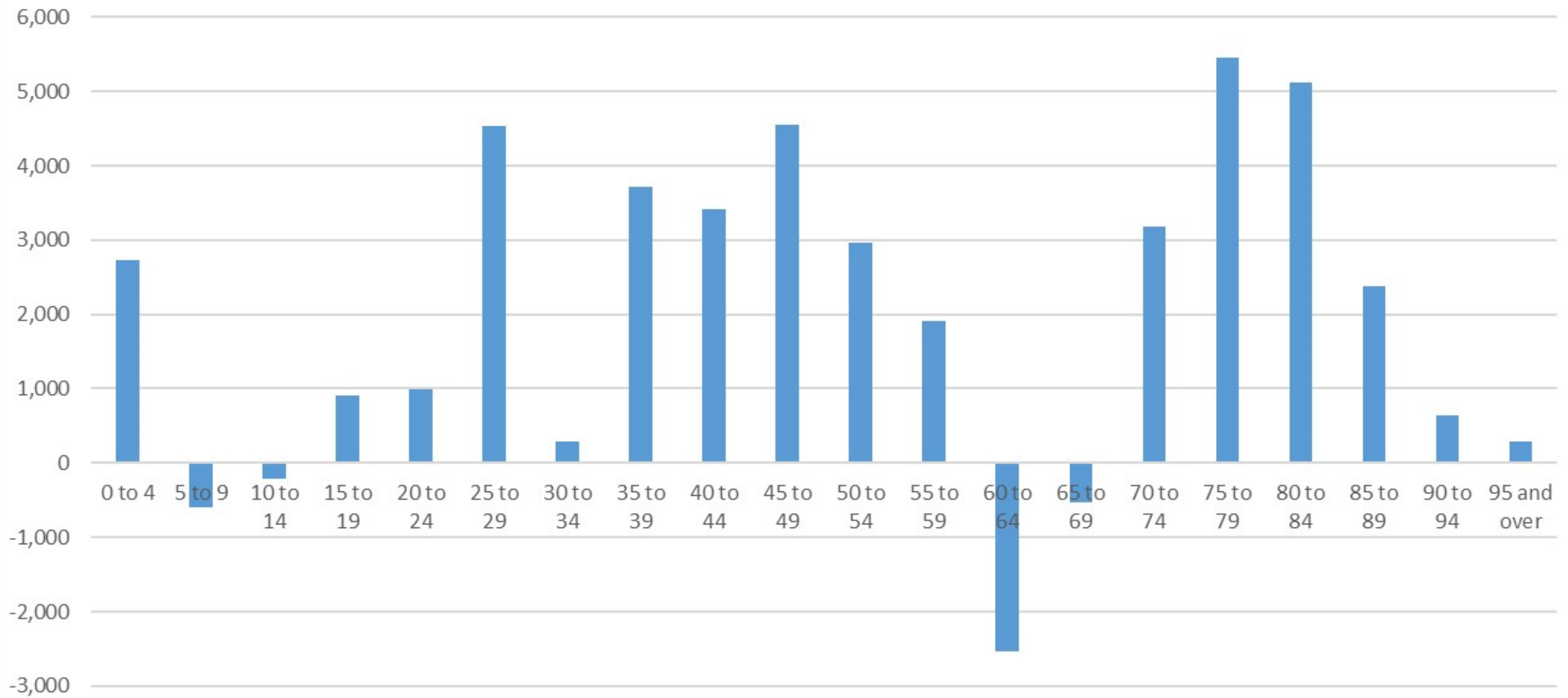
# Net Migration by Age - Larimer

Larimer County Net Migration By Age, 2010s

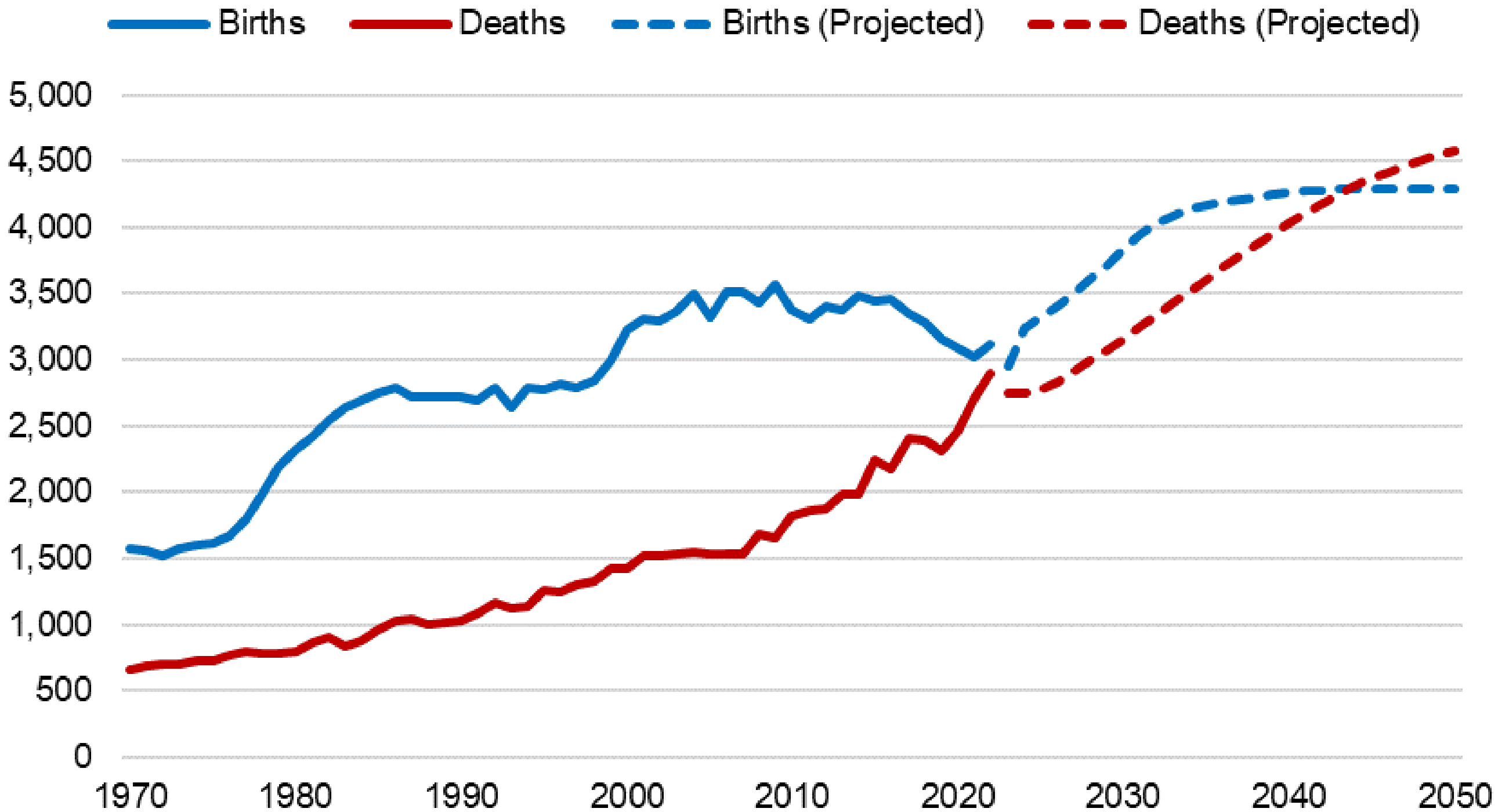


# Projected Change by Age Group

Larimer County Change in Population By Age Group, 2022 to 2030



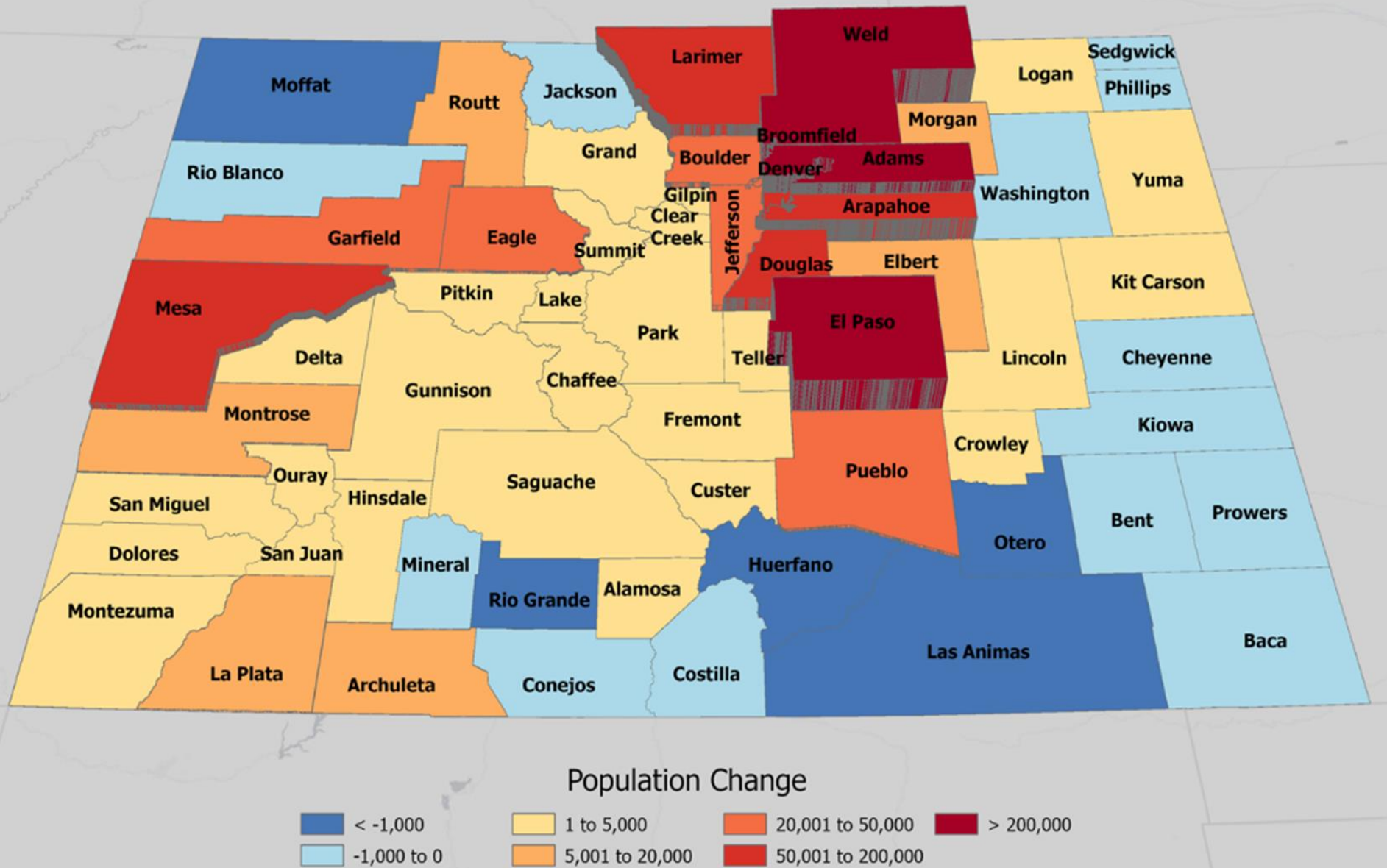
# Larimer County Births and Deaths, 1970 to 2050



# Population Forecast 2050

7.49 million

Projected Population Change  
2020 - 2050



**Change 2020-2050**  
**State: 1.65 million**  
**Front Range: 1.47M**  
**Western Slope: 170K**  
**Central Mtns: 7K**  
**San Luis Valley: 0**  
**Eastern Plains: 13K**

## Uncertainties

- International migration
- Slower national growth, competition for labor?
- Housing supply, costs compared to rest of nation
- Industry changes, automation
- Natural disasters, water

Source: Colorado State Demography Office

October 2023



**COLORADO**  
 Department of Local Affairs

Source: State Demography Office, 2022



# *Summary - Poudre School District*

- The location of the growth within the county will determine which school districts may be impacted by the projected growth and increases in births
  - Expected local area housing development has the potential to be a critical component of any local school district's projected population
- Over the last decade, we have seen dramatic declines in the fertility rate of younger females, both nationally and in Colorado. For Larimer County, the change has been similar.
- Projection that Larimer County births will return to increasing after 2024
  - expected increase in Larimer County's overall population including higher increases for females ages 30-35
  - declining fertility rates for younger females, but increasing fertility rates for females over age 30





TM

[demography.dola.colorado.gov](http://demography.dola.colorado.gov)

Nancy Gedeon

[nancy.gedeon@state.co.us](mailto:nancy.gedeon@state.co.us)

303-864-7755

State Demography Office

Department of Local Affairs

[demography.dola.colorado.gov](http://demography.dola.colorado.gov)



bitly



**COLORADO**  
Department of Local Affairs