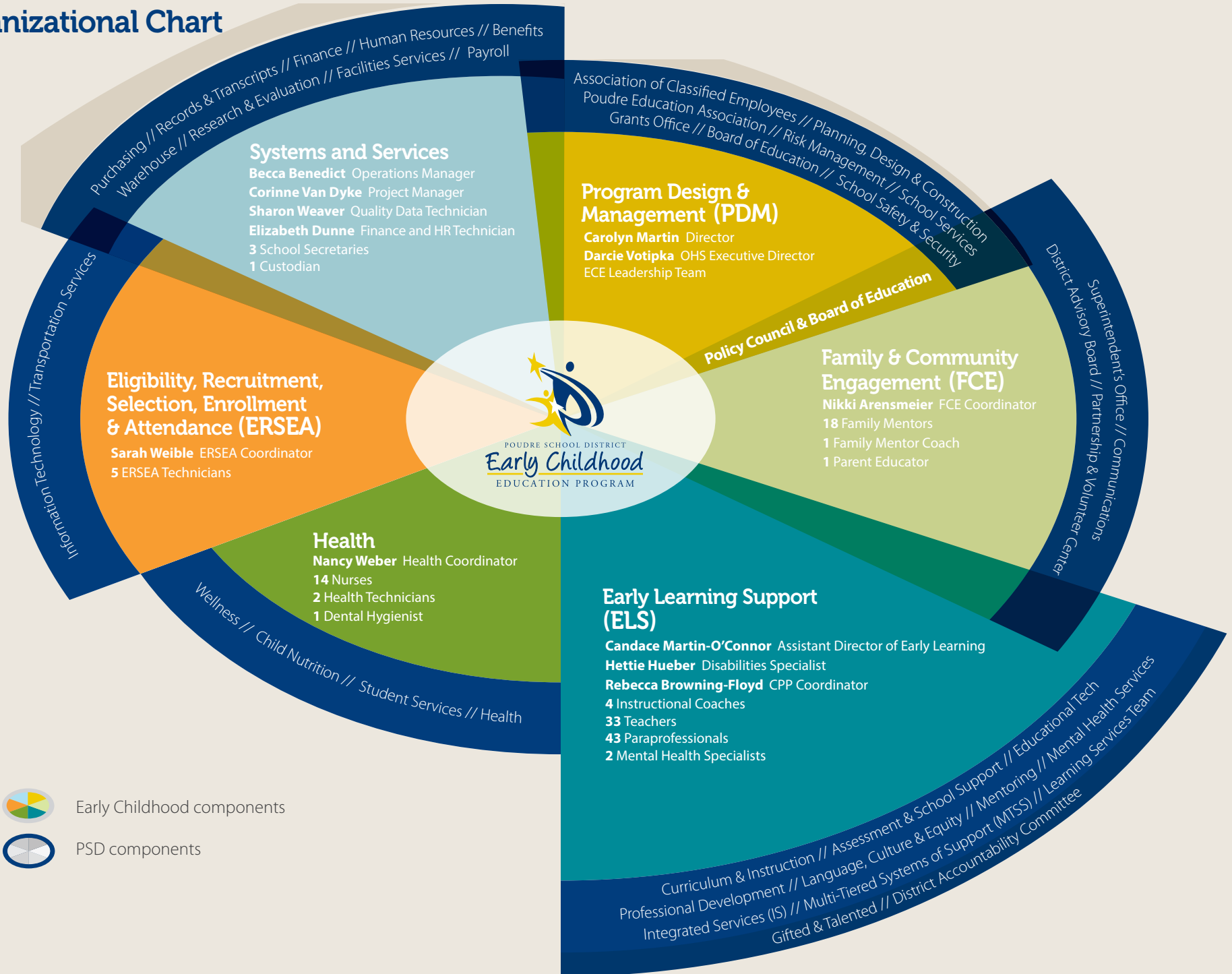


Early Child Education Program

Organizational Chart





Program Design & Management



Carolyn Martin

Director of Early Childhood Education

Office: 970-490-3195

Cell: 970-566-2316

Email: carolynm@psdschools.org

Early Childhood Program Administrator, with direct responsibility and oversight of the program.



Systems and Services



Becca Benedict

Operations Manager

Office: 970-490-3254

Email: rbenedict@psdschools.org

Early Childhood Operations Manager, responsible for oversight of program operations.



Corinne Van Dyke

Project Manager

Office: 970-490-3052

Cell: 970-567-6965

Email: cvandyke@psdschools.org

Early Childhood Project Manager, responsible for project management of program operations.



Sharon Weaver

Quality Data Technician

Office: 970-490-3117

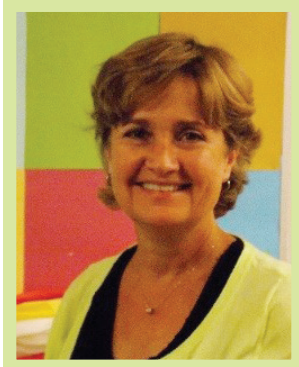
Cell: 970-631-4111

Email: sharonw@psdschools.org

Early Childhood Data Technician, responsible for data analysis to support data-driven initiatives.



Family & Community Engagement



Nikki Arensmeier

Parent, Family & Community Engagement Coordinator

Office: 970-490-3188

Cell: 970-217-7855

Email: earensme@psdschools.org

Early Childhood PFCE Coordinator, responsible for the direct supervision of the Family Mentors and acting as liaison with outside agencies.



(ERSEA)

Eligibility, Recruitment, Selection, Enrollment & Attendance



Sarah Weible

ERSEA Coordinator

Office: 970-490-3117

Cell: 970-217-4416

Email: sweible@psdschools.org

Early Childhood Enrollment Coordinator, responsible for eligibility, recruitment, selection, enrollment, attendance and transportation.



(ELS) Early Learning Support



Candace Martin-O'Connor
Assistant Director of Early Learning
Office: 970-490-3082
Cell: 970-567-2327
Email: cmartino@psdschools.org

Early Childhood Program Early Learning Support Coordinator, responsible for coordinating all education related programs.



Hettie Hueber
Disabilities Coordinator
Office: 970-490-3092
Cell: 970-692-7099
Email: hhueber@psdschools.org

Early Childhood Disabilities Coordinator, responsible for coordination of special education.

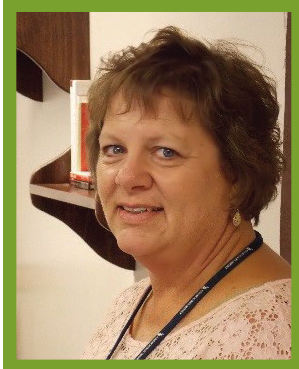


Rebecca Browning-Floyd
Colorado Preschool Program Coordinator
Office: 970-490-3102
Cell: 970-556-9276
Email: rbrownin@psdschools.org

Early Childhood CPP Coordinator, responsible for managing the state Colorado Preschool Program contract and liaison with the CPP community partner sites.



Health



Nancy Weber

Health Coordinator

Office: 970-490-3388

Cell: 970-556-5905

Email: nweber@psdschools.org

Early Childhood Health and Dental Coordinator, responsible for all health and dental oversight.