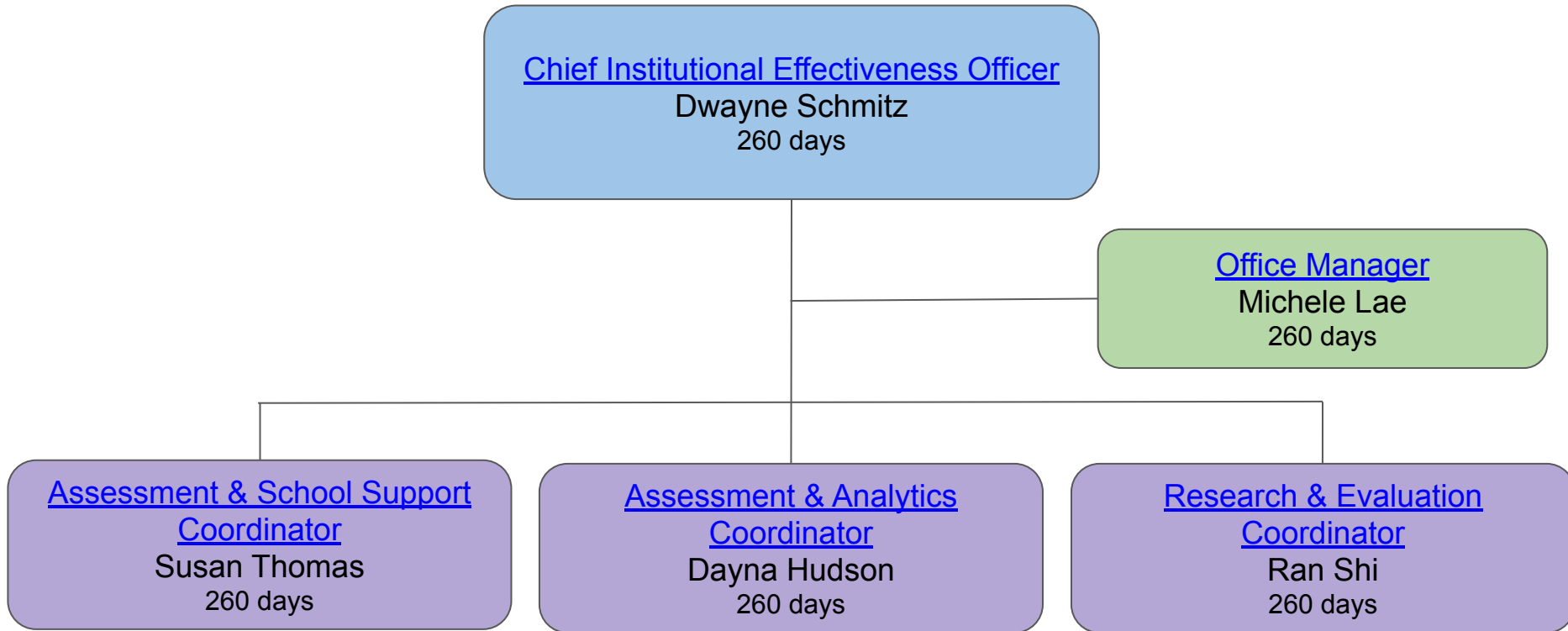


# Assessment, Research, Evaluation, and Accountability

## Organizational Chart



# Dwayne Schmitz

Chief Institutional Effectiveness Officer

dschmitz@psdschools.org, 490-3693



## Departments

- Curriculum & Instruction (Director Amanda Kreiger)
- Career & Innovation (Director Tayna Alcaraz)
- Professional Learning (Director Kate Canine)
- [Assessment, Research, Evaluation, & Accountability](#)

## Committees

- [District Accountability Committee](#) (DAC)
- [BOE Student Advisory Council](#) (StAC) Liaison

## Key Processes

- District Accountability & Improvement
  - [DE 1.0 Monitoring Report](#)
  - [Unified Improvement Plan](#) (UIP)
- System Insight Analytics Platform
- [Educator Effectiveness Growth Ratings](#)
- Superintendent Evaluation Support
- External Research Requests
- Community Partnerships

# Michele Lae

## Office Manager

michelel@psdschools.org, 490-3303



### Office Manager

- Supports CIEO and three coordinators
- Oversees department operating budgets
- Secretary for the [District Accountability Committee](#) (DAC), and [BOE Student Advisory Council](#) (StAC)
- Completes human resources, payroll (one-time-pays) & leave time paperwork
- Schedules appointments & meeting setup
- Webpage management
- Maintains office

### Assessment Support

NWEA, ACCESS/Alternate ACCESS, PSAT/SAT, CMAS/CoAlt, Dynamic Learning Maps (DLM)

- Assessment user accounts & student registration
- Assists in preparation and coordination of annual testing processes
- Compile and organize state and district assessment data
- Assist in preparing and distributing reports

Susan Thomas

## Assessment & School Support Coordinator

sthomas@psdschools.org, 490-3124



### State Assessment

- CMAS Assessment
- PSAT/SAT Assessment
- ACCESS for ELLs
- State Testing Accommodations
- Alternate State Assessments
  - Dynamic Learning Maps
  - CoAlt Science/Social Studies
  - Alternate ACCESS
- National/International Testing

### Local Assessment

- Curriculum Based Assessment (CBA) Secondary Liaison
- Assessment Budget Oversight
- Local Assessment Psychometrics

### School Support

- School Accountability & Improvement Cycles
- Equity & Diversity Advisory Committee(EDAC) Liaison
- State/Federal Accountability Liaison (e.g., TAP)
- Assessment Data Releases

# Dayna Hudson

## Assessment & Analytics Coordinator

dhudson@psdschools.org, 490-3217



### Local Assessments

- NWEA MAP Assessment: Testing Coordinator
- NWEA MAP Assessment: Reporting Support
- Local Assessment (e.g., Accuplacer, ACT, ACT WorkKeys, AP, ASVAB, CogAT, IB) Liaison
- DIBELS Assessment Liaison
- Curriculum Based Assessment (CBA) Elementary Liaison

### Analytics

- Analytics Platforms Updates/Use
  - Achievement & Growth
  - Attendance
  - Connections Survey
  - Discipline
  - Dropout Rates, Graduation Rates, Mobility Rates, Post Secondary Outcomes, Pupil Membership
  - Early Childhood
  - Equity Insight
  - Family Engagement Survey
  - IEP & Disproportionality
- Student Connection Survey Coordinator
- Family Engagement Survey Coordinator

# Ran Shi

## Research & Evaluation Coordinator

rshi@psdschools.org, 490-3038



### System Analytics and Leadership Support

- [DE 1.0 Monitoring Report](#)
- [Educator Effectiveness Growth Ratings](#)
- Survey Development
- Department Research Consultation
- Develop/Maintain Actionable Visualization Tools
- Continuous Improvement Support
- Special Projects

### Evaluation & External Research Partnerships

- External Research Request Process
- Strategic Plan Evaluation
- [Summer Learning Evaluation](#)
- Curriculum Adoption/Implementation Evaluation
- [Pilot Project Evaluation](#)
- Association of Colorado Educational Evaluators (ACEE) Liaison