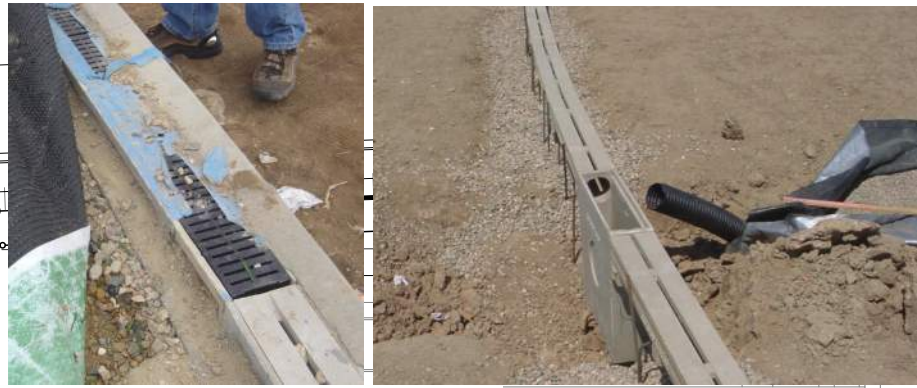




04.16.19

EXSTG. CONDITIONS / DEMOLITION PLAN

SCALE: 1"=50'-0"
@ 11x17 SHEET SIZE



TYP. / EXSTG. 'J' CURB - PERIMETER DRAIN



DRIVE

EXISTING COMMUNICATION BOX ASSEMBLIES TO BE REMOVED FROM SITE. CONTRACTOR TO PROTECT EXSTG. CONDUITS, CABLE, WIRE, ETC. WITH NEW CONST., TYP. @ 4 LOCATIONS

EXISTING COMMUNICATION BOX (4 OF 4)

EXISTING COMPOSITE ATTACHMENT 'NAILER' TO BE REMOVED - FULL LENGTH.

EXSTG. CONC. 'J' CURB WITH ACO DRAIN & GRATES TO REMAIN & SHALL BE PROTECTED THROUGHOUT CONST. - FULL LENGTH

COMPOSITE DECKING TO BE CAREFULLY REMOVED - FULL LENGTH ALONG D-SECTION.

EXISTING 6" "RECESSED" ATTACHMENT CONC. CURB TO REMAIN

NORTH D-SECTION TO REMAIN & BE PROTECTED THROUGHOUT CONST.

EXISTING SYNTHETIC GRASS INSTALLATION TO BE REMOVED FROM SITE (+/- 85,670 SQ.FT.)

EXISTING GOAL POSTS (TYP. BOTH ENDS) TO REMAIN / BE PROTECTED THROUGHOUT CONST.

SOUTH D-SECTION TO REMAIN & BE PROTECTED THROUGHOUT CONST.

COMPOSITE DECKING TO BE CAREFULLY REMOVED - FULL LENGTH ALONG D-SECTION.

EXISTING 6" "RECESSED" ATTACHMENT CONC. CURB TO REMAIN

EXISTING COMPOSITE ATTACHMENT 'NAILER' TO BE REMOVED - FULL LENGTH.

EXSTG. CONC. 'J' CURB WITH ACO DRAIN & GRATES TO REMAIN & SHALL BE PROTECTED THROUGHOUT CONST. - FULL LENGTH

EXISTING ACO 'SLOT' DRAIN & CURB, FULL LENGTH - TO BE REMAIN / SHALL BE PROTECTED THROUGHOUT CONST.

EXISTING TRACK / FIELD ACCESS GATE

EXISTING COMMUNICATION BOX (2 OF 4)

EXISTING COMMUNICATION BOX (3 OF 4)

EXISTING TRACK / FIELD ACCESS GATE

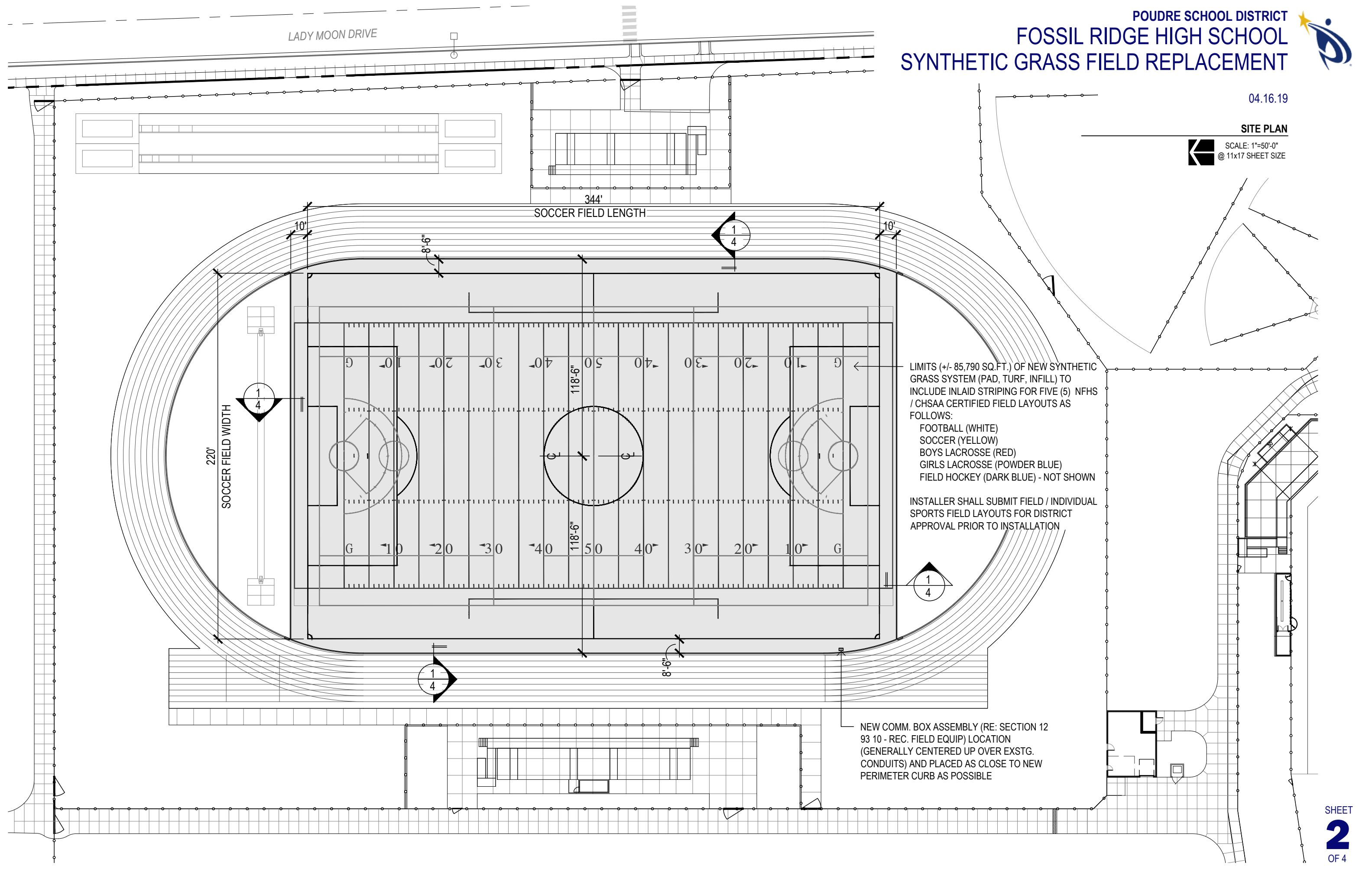


FOSSIL RIDGE HIGH SCHOOL SYNTHETIC GRASS FIELD REPLACEMENT

04.16.19

SITE PLAN

SCALE: 1"=50'-0"
@ 11x17 SHEET SIZE



LIMITS (+/- 85,790 SQ.FT.) OF NEW SYNTHETIC GRASS SYSTEM (PAD, TURF, INFILL) TO INCLUDE INLAID STRIPING FOR FIVE (5) NFHS / CHSAA CERTIFIED FIELD LAYOUTS AS FOLLOWS:
FOOTBALL (WHITE)
SOCCER (YELLOW)
BOYS LACROSSE (RED)
GIRLS LACROSSE (POWDER BLUE)
FIELD HOCKEY (DARK BLUE) - NOT SHOWN

INSTALLER SHALL SUBMIT FIELD / INDIVIDUAL SPORTS FIELD LAYOUTS FOR DISTRICT APPROVAL PRIOR TO INSTALLATION

NEW COMM. BOX ASSEMBLY (RE: SECTION 12 93 10 - REC. FIELD EQUIP) LOCATION (GENERALLY CENTERED UP OVER EXSTG. CONDUITS) AND PLACED AS CLOSE TO NEW PERIMETER CURB AS POSSIBLE



04.16.19

GRADING PLAN

SCALE: 1"=50'-0"
@ 11x17 SHEET SIZE

LADY MOON DRIVE

ORIG. DESIGN ELEV. =
907.84' (FIELD VERIFY)

ORIG. DESIGN ELEV. =
907.84' (FIELD VERIFY)

ORIG. DESIGN ELEV. =
907.84' (FIELD VERIFY)

TOP OF NEW PERIMETER CURB TO FOLLOW
FINISH ELEV. / SURFACE OF D-SECTION AND
/ OR ACO DRAIN INSIDE EDGE.

VERIFY THIS CONDITION W/ PROJECT
MANAGER BEFORE / WHILE SETTING FORMS

908.43'
FIELD VERIFY

907.84'

EXSTG.
908

ORIG. DESIGN ELEV. =
907.84' (FIELD VERIFY)

ORIG. DESIGN ELEV. =
907.84' (FIELD VERIFY)

ORIG. DESIGN ELEV. =
907.84' (FIELD VERIFY)

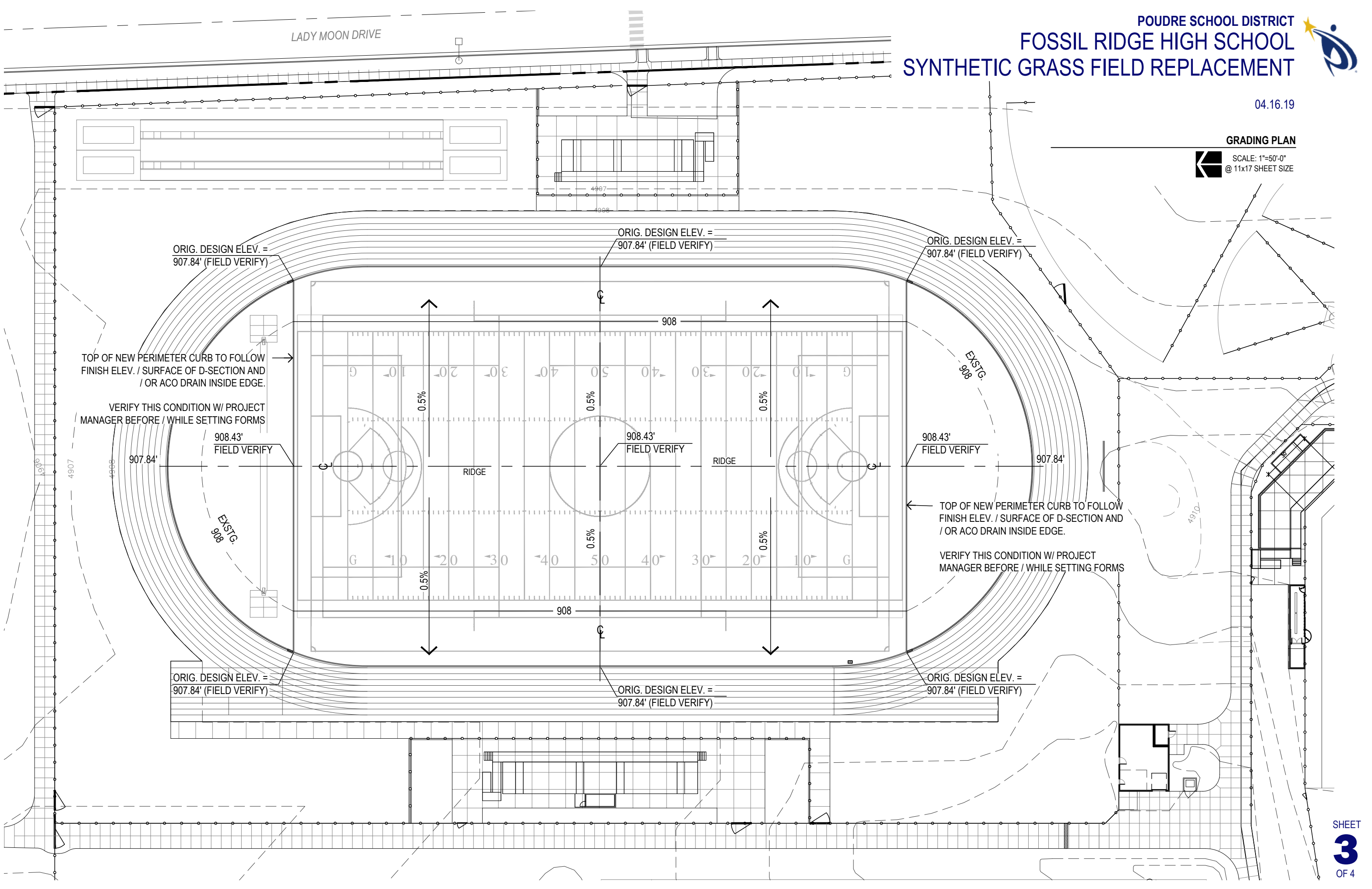
TOP OF NEW PERIMETER CURB TO FOLLOW
FINISH ELEV. / SURFACE OF D-SECTION AND
/ OR ACO DRAIN INSIDE EDGE.

VERIFY THIS CONDITION W/ PROJECT
MANAGER BEFORE / WHILE SETTING FORMS

908.43'
FIELD VERIFY

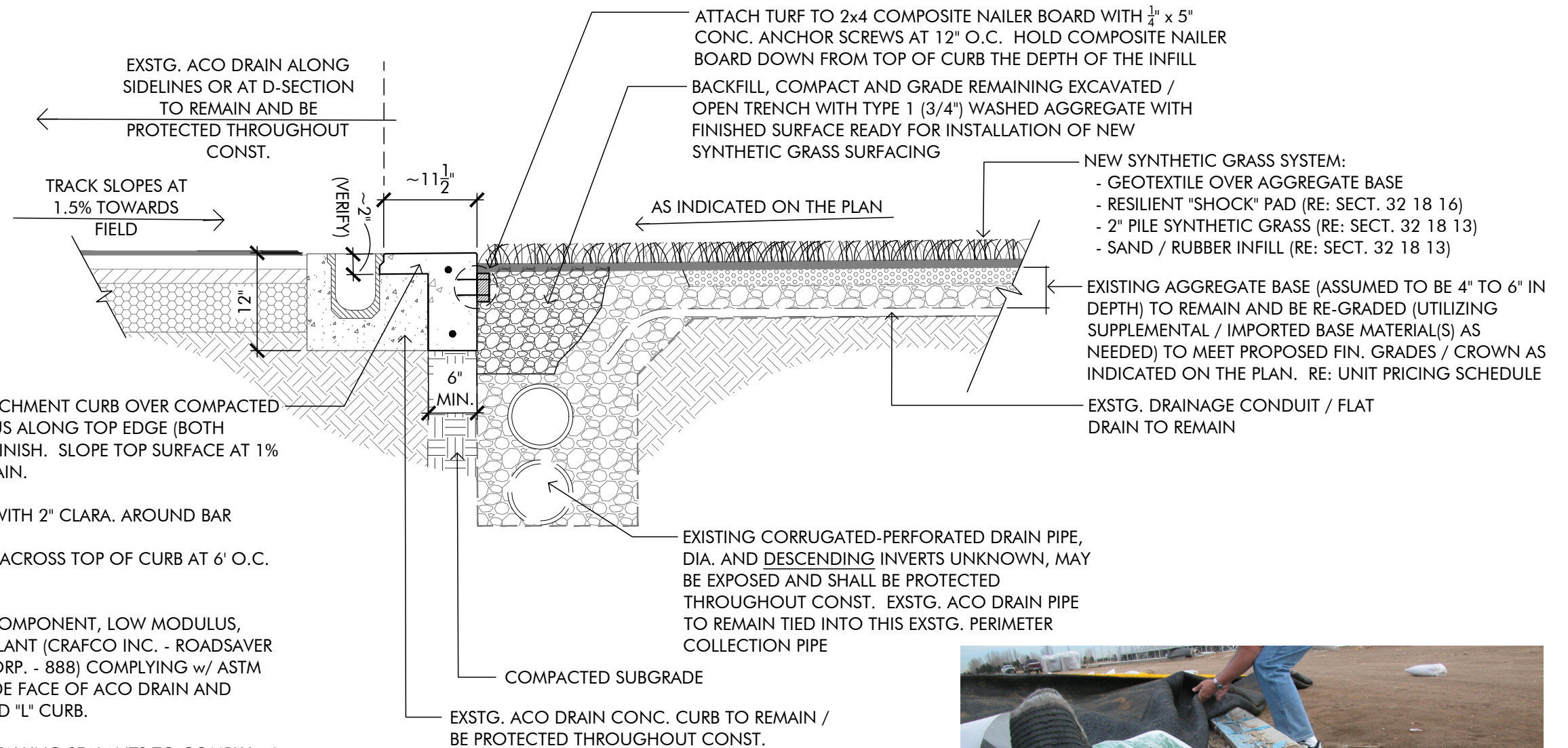
907.84'

EXSTG.
908





04.16.19



NEW STAND. GRAY CONC. ATTACHMENT CURB OVER COMPACTED SUBGRADE. PROVIDE 1/2" RADIUS ALONG TOP EDGE (BOTH EDGES) WITH MEDIUM BROOM FINISH. SLOPE TOP SURFACE AT 1% MIN. TOWARDS EXSTG. ACO DRAIN.

PROVIDE 2 - #4 REBAR, CONT., WITH 2" CLARA. AROUND BAR

PROVIDE TOOL/SAW CUT JOINT ACROSS TOP OF CURB AT 6' O.C. SPACING.

PROVIDE A NON-SAG, SINGLE-COMPONENT, LOW MODULUS, NEUTRAL CURING SILICONE SEALANT (CRAFCO INC. - ROADSaver SILICONE or DOW CORNING CORP. - 888) COMPLYING w/ ASTM D-5893 IN JOINT BETWEEN INSIDE FACE OF ACO DRAIN AND OUTSIDE FACE OF NEW INVERTED "L" CURB.

CLEAN OUT JOINTS BEFORE INSTALLING SEALANTS TO COMPLY w/ MANUFACTURER'S WRITTEN INSTRUCTIONS. IMMEDIATELY AFTER SEALANT APPLICATION AND BEFORE SKINNING OR CURING BEGINS, TOOL SEALANTS TO FORM SMOOTH, UNIFORM BEADS TO ELIMINATE AIR POCKETS AND ENSURE CONTACT AND ADHESION OF SEALANT WITH SIDES OF JOINT.



1 **PERIMETER ATTACHMENT CURB**
 SCALE: 3/4"=1'-0"