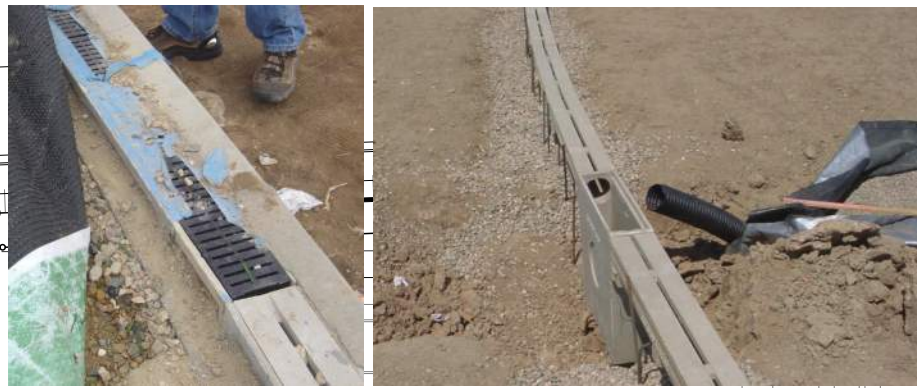




03.25.19

EXSTG. CONDITIONS / DEMOLITION PLAN

SCALE: 1"=50'-0"
@ 11x17 SHEET SIZE



TYP. / EXSTG. 'J' CURB - PERIMETER DRAIN



DRIVE

EXISTING COMMUNICATION BOX ASSEMBLIES TO BE REMOVED FROM SITE. CONTRACTOR TO PROTECT EXSTG. CONDUITS, CABLE, WIRE, ETC. WITH NEW CONST., TYP. @ 4 LOCATIONS

EXISTING COMMUNICATION BOX (4 OF 4)

PROTECT ← DEMO

← DEMO → PROTECT

EXISTING COMPOSITE ATTACHMENT EDGE AND CONC. 'J' CURB WITH ACO DRAIN & GRATES TO BE REMOVED - FULL LENGTH

FOLLOWING REMOVALS - SAW CUT A STRAIGHT NORTH-SOUTH LINE TO ACCOMMODATE NEW CURB (RE: SITE PLAN)

EXISTING 6" "RECESSED" ATTACHMENT CONC. CURB / COMPOSITE DECKING TO BE CAREFULLY REMOVED - FULL LENGTH ALONG D-SECTION

EXISTING SYNTHETIC GRASS INSTALLATION TO BE REMOVED FROM SITE (+/- 85,670 SQ.FT.)

EXISTING GOAL POSTS (TYP. BOTH ENDS) TO REMAIN / BE PROTECTED THROUGHOUT CONST.

NORTH D-SECTION TO REMAIN & BE PROTECTED THROUGHOUT CONST.

SOUTH D-SECTION TO REMAIN & BE PROTECTED THROUGHOUT CONST.

EXISTING COMPOSITE ATTACHMENT EDGE AND CONC. 'J' CURB WITH ACO DRAIN & GRATES TO BE REMOVED - FULL LENGTH

EXISTING 6" "RECESSED" ATTACHMENT CONC. CURB / COMPOSITE DECKING TO BE CAREFULLY REMOVED - FULL LENGTH ALONG D-SECTION

FOLLOWING REMOVALS - SAW CUT A STRAIGHT NORTH-SOUTH LINE TO ACCOMMODATE NEW CURB (RE: SITE PLAN)

← DEMO → PROTECT

← DEMO → PROTECT

EXISTING TRACK / FIELD ACCESS GATE

EXISTING ACO 'SLOT' DRAIN FROM NW CORNER TO NE CORNER TO BE REMAIN / PROTECTED THROUGHOUT CONST.

EXISTING COMMUNICATION BOX (2 OF 4)

EXISTING COMMUNICATION BOX (3 OF 4)

EXISTING TRACK / FIELD ACCESS GATE

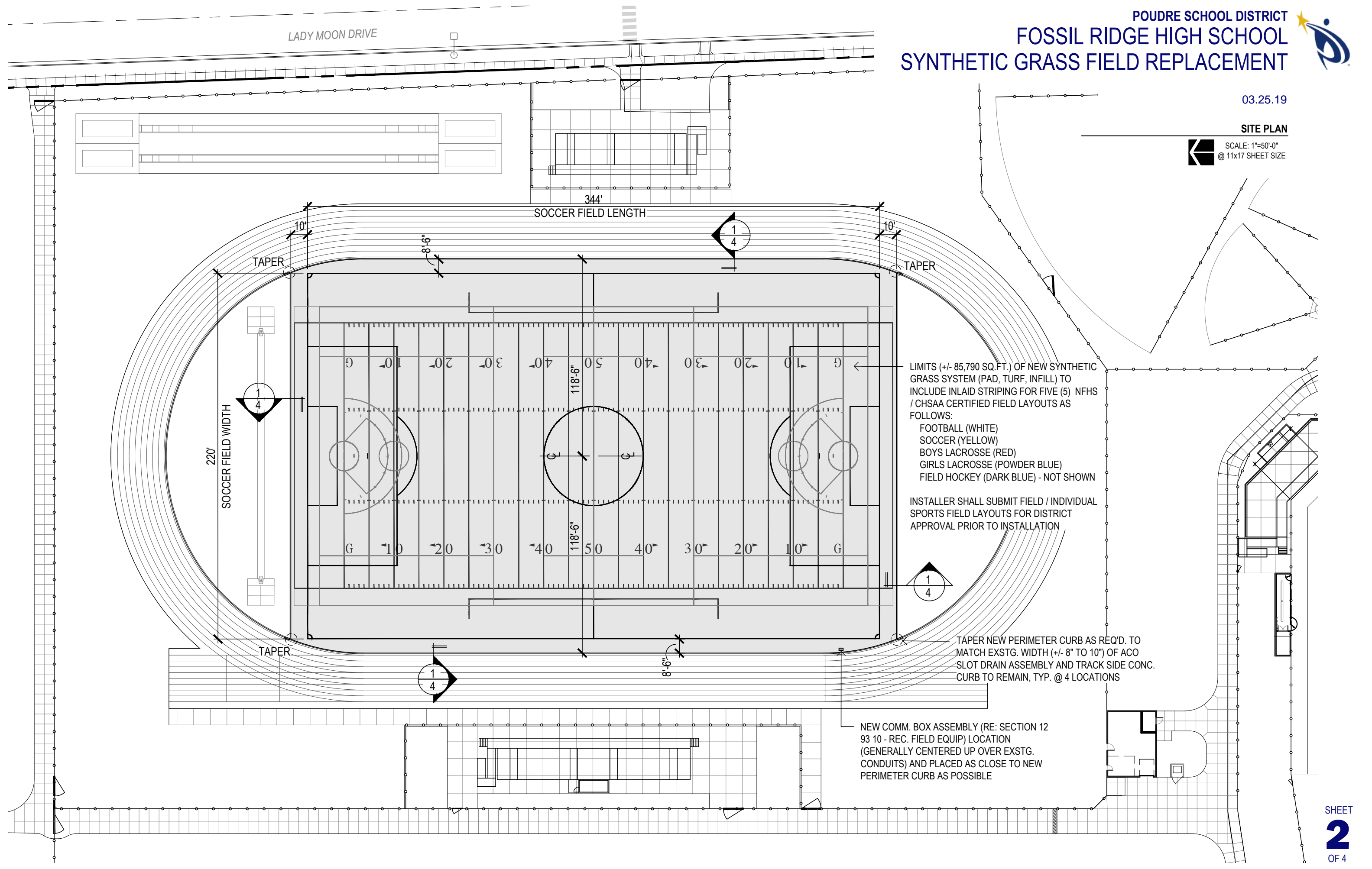


FOSSIL RIDGE HIGH SCHOOL SYNTHETIC GRASS FIELD REPLACEMENT

03.25.19

SITE PLAN

SCALE: 1"=50'-0"
@ 11x17 SHEET SIZE



LIMITS (+/- 85,790 SQ.FT.) OF NEW SYNTHETIC GRASS SYSTEM (PAD, TURF, INFILL) TO INCLUDE INLAID STRIPING FOR FIVE (5) NFHS / CHSAA CERTIFIED FIELD LAYOUTS AS FOLLOWS:
FOOTBALL (WHITE)
SOCCER (YELLOW)
BOYS LACROSSE (RED)
GIRLS LACROSSE (POWDER BLUE)
FIELD HOCKEY (DARK BLUE) - NOT SHOWN

INSTALLER SHALL SUBMIT FIELD / INDIVIDUAL SPORTS FIELD LAYOUTS FOR DISTRICT APPROVAL PRIOR TO INSTALLATION

TAPER NEW PERIMETER CURB AS REQ'D. TO MATCH EXSTG. WIDTH (+/- 8" TO 10") OF ACO SLOT DRAIN ASSEMBLY AND TRACK SIDE CONC. CURB TO REMAIN, TYP. @ 4 LOCATIONS

NEW COMM. BOX ASSEMBLY (RE: SECTION 12 93 10 - REC. FIELD EQUIP) LOCATION (GENERALLY CENTERED UP OVER EXSTG. CONDUITS) AND PLACED AS CLOSE TO NEW PERIMETER CURB AS POSSIBLE

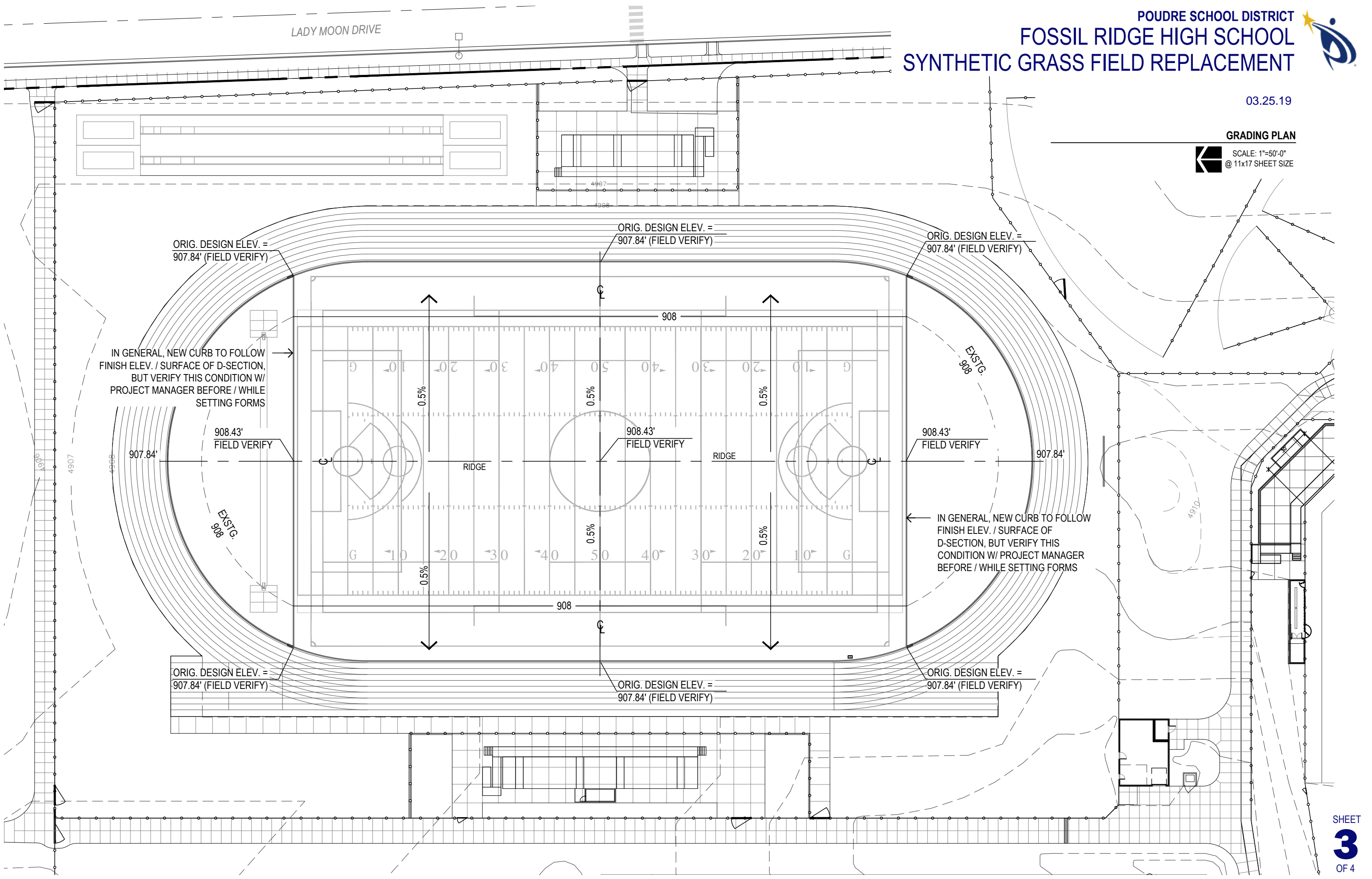


03.25.19

GRADING PLAN

SCALE: 1"=50'-0"
@ 11x17 SHEET SIZE

LADY MOON DRIVE



ORIG. DESIGN ELEV. = 907.84' (FIELD VERIFY)

ORIG. DESIGN ELEV. = 907.84' (FIELD VERIFY)

ORIG. DESIGN ELEV. = 907.84' (FIELD VERIFY)

IN GENERAL, NEW CURB TO FOLLOW FINISH ELEV. / SURFACE OF D-SECTION, BUT VERIFY THIS CONDITION W/ PROJECT MANAGER BEFORE / WHILE SETTING FORMS

908.43' FIELD VERIFY

908.43' FIELD VERIFY

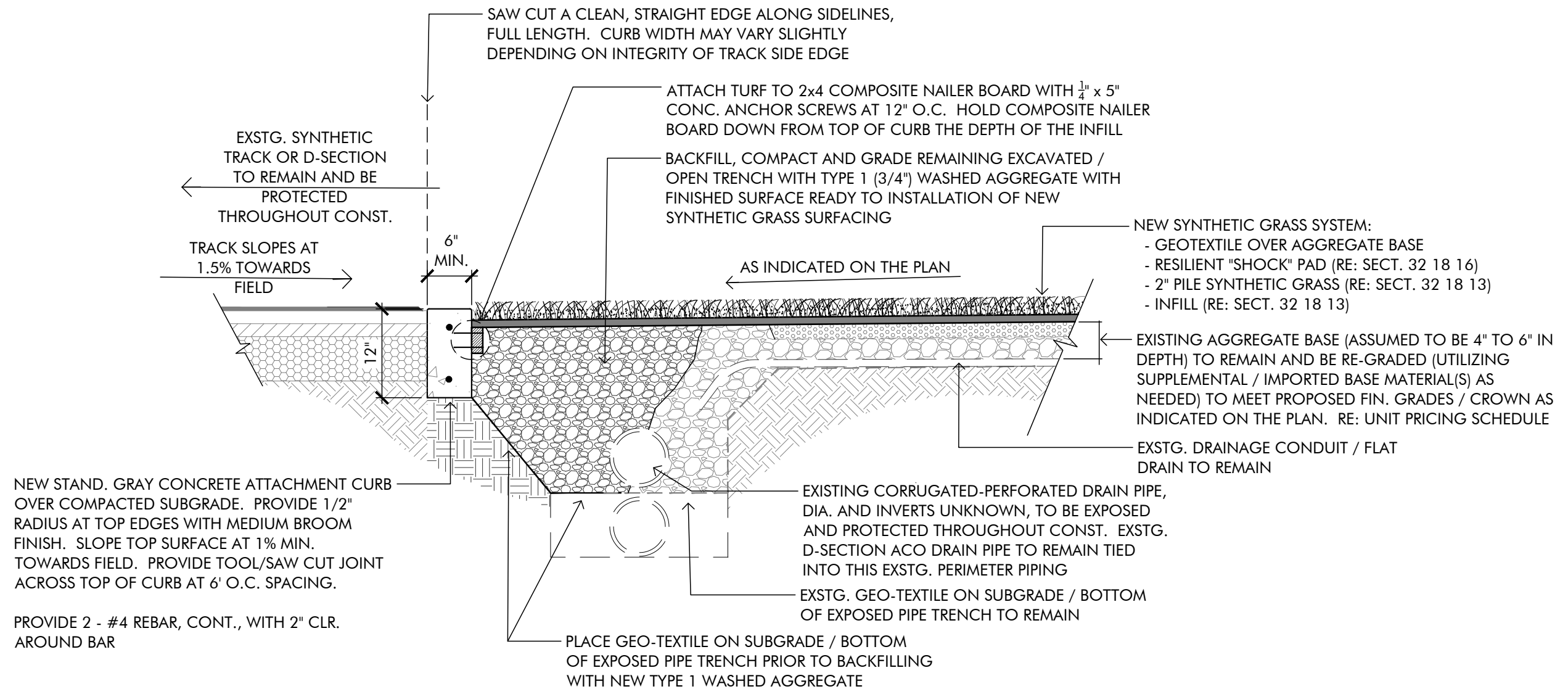
908.43' FIELD VERIFY

IN GENERAL, NEW CURB TO FOLLOW FINISH ELEV. / SURFACE OF D-SECTION, BUT VERIFY THIS CONDITION W/ PROJECT MANAGER BEFORE / WHILE SETTING FORMS

ORIG. DESIGN ELEV. = 907.84' (FIELD VERIFY)

ORIG. DESIGN ELEV. = 907.84' (FIELD VERIFY)

ORIG. DESIGN ELEV. = 907.84' (FIELD VERIFY)



1 **PERIMETER ATTACHMENT CURB**
 SCALE: 3/4"=1'-0"