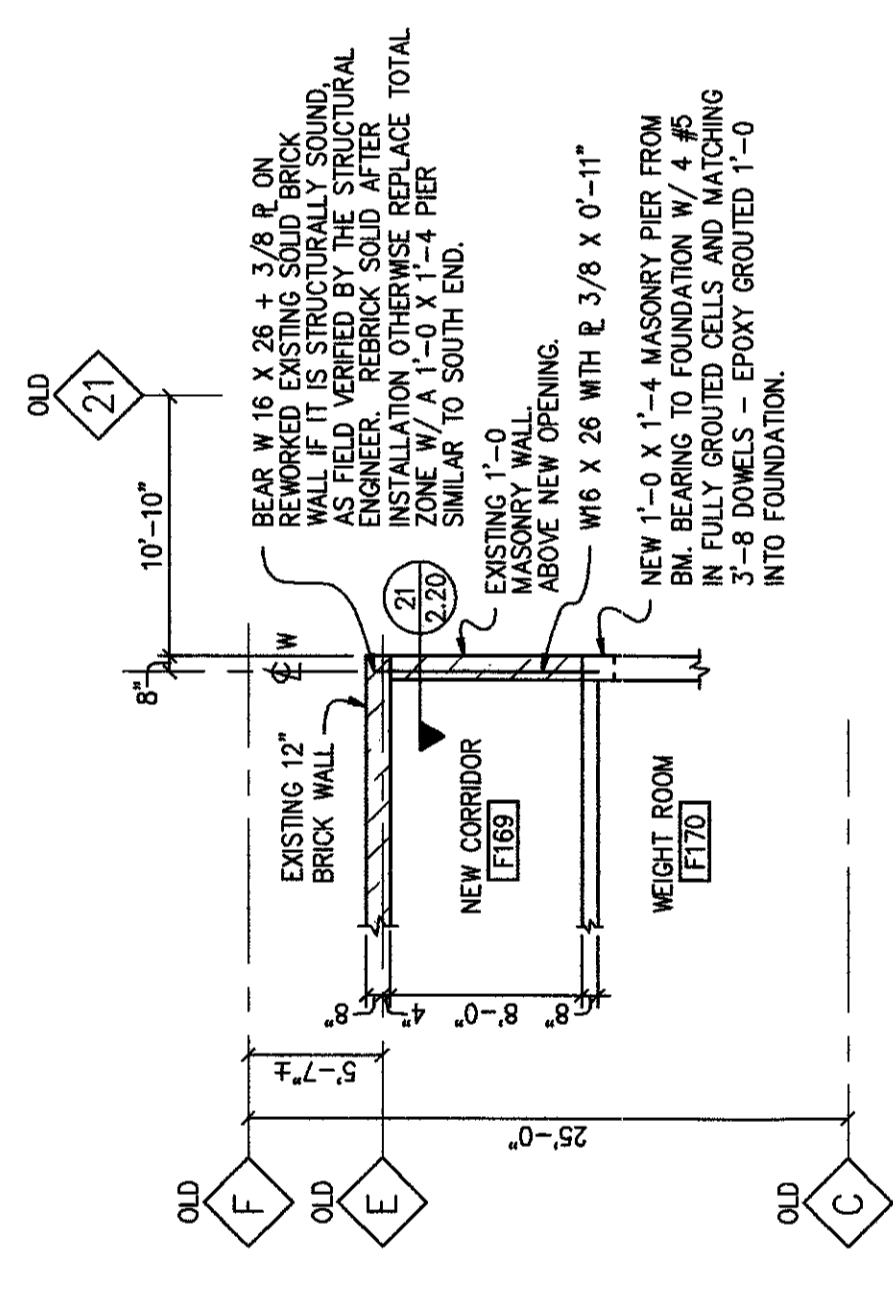
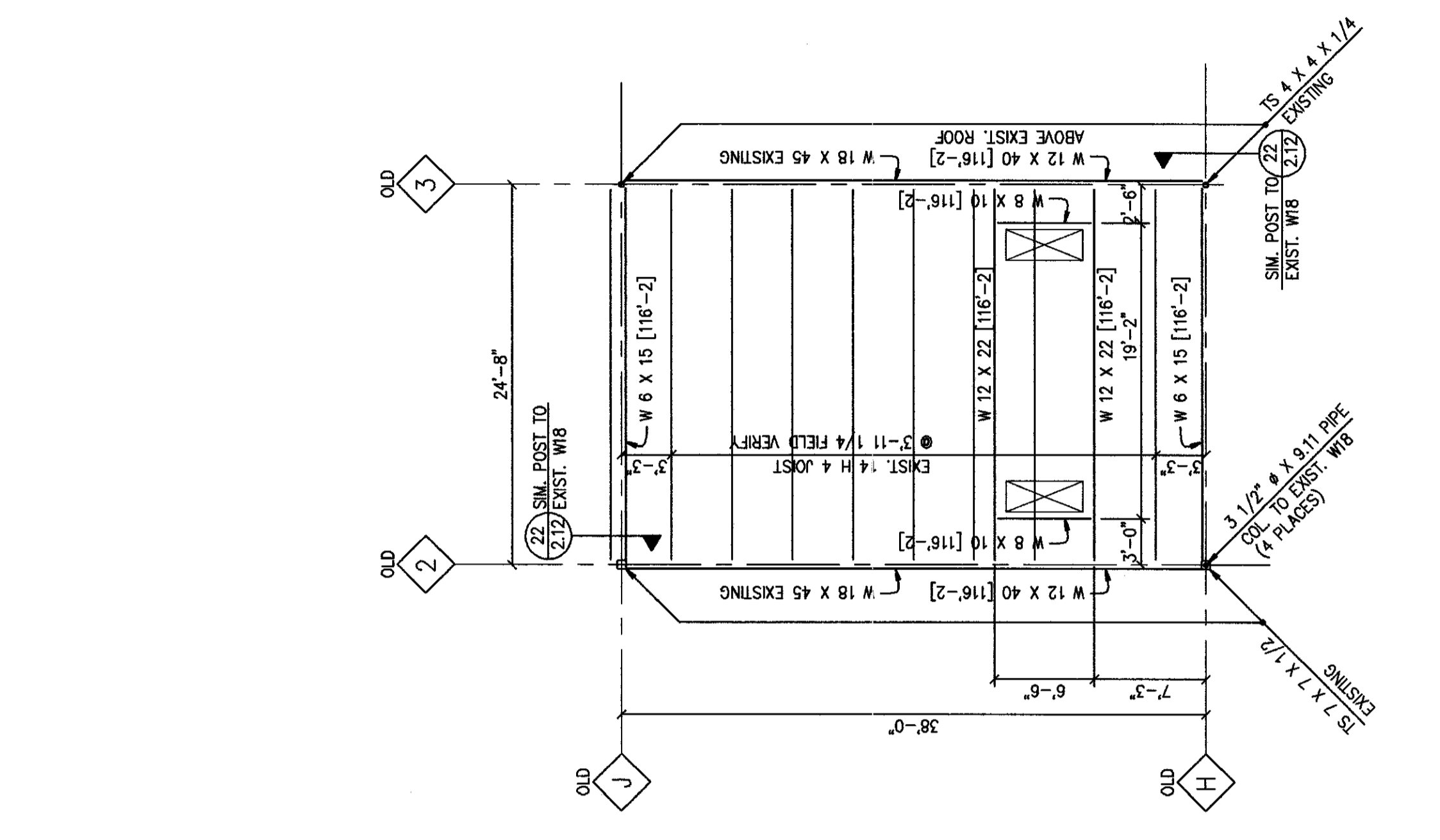


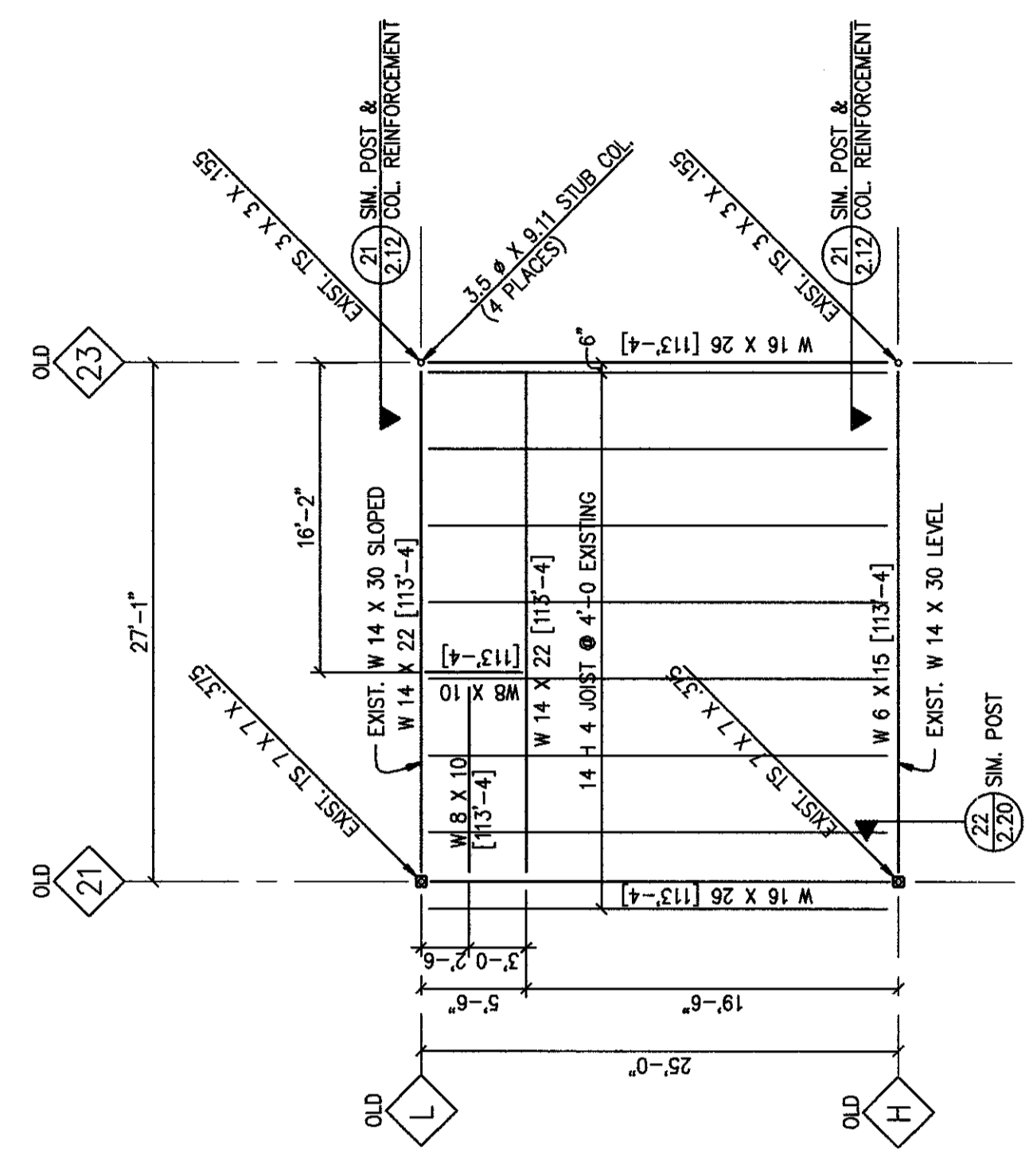
NOTE: TOP OF STEEL NOTED THUS [] ON PLAN.
HIGH ROOF FRAMING
PLANS - AREA E
 1/8" = 1'-0"



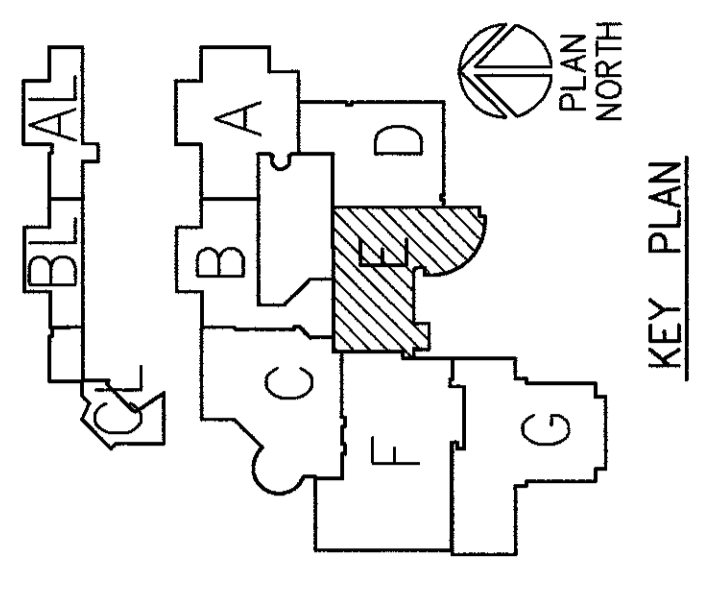
PARTIAL PLAN AREA F
ABOVE CORRIDOR [F169]
 1/8" = 1'-0"
 REF: ARCH. DWG. 3.2F
 NOT IN BP - 4



PARTIAL PLAN AREA F
ABOVE ROOM [F178], ROOM [F179]
 1/8" = 1'-0"
 REF: ARCH. DWG. 3.2F
 NOT IN BP - 4

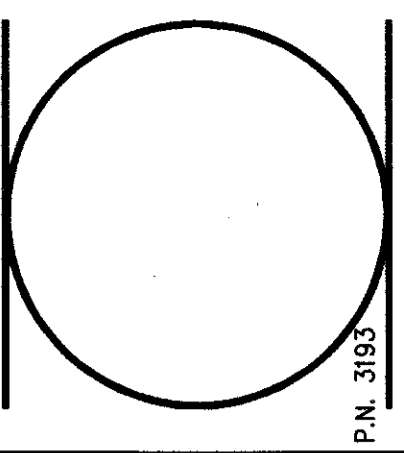


PARTIAL PLAN AREA F
ABOVE ROOM [F154]
 1/8" = 1'-0"
 REF: ARCH. DWG. 3.2F
 NOT IN BP - 4



DATE	DESCRIPTION	BY	APPROV'D
1/18/94	ISSUED FOR BP-3 FOUNDATIONS	RMM	RMM
2/07/94	ISSUED FOR BID PACKAGE 4	RMM	RMM
3/29/94	COORDINATION AND CORRECTIONS	RMM	RMM
3/29/94	ISSUED FOR BID PACKAGE 5	RMM	RMM
05/05/96	Revised Drawing		

RUSSELL M. MILLER
 CONSULTING ENGINEER
 4000 North Street
 Thornton, Colorado 80221
 303-751-8870



POUDRE SCHOOL DISTRICT R-1
ADDITION & REMODEL
FORT COLLINS, COLORADO

Robb, Brenner, and Brugg, Inc.
 Structural Engineers
 Fort Collins, CO 80521
 970-225-8800



JOB NUMBER	9222
DRAWN	CB / LS
CHECKED	RMM / ARG
ISSUE	03/29/94
REVISIONS	

SHEET NOTES
 1. REFER TO THE GENERAL STRUCTURAL NOTES ON SHEET 2.1AB AND PROJECT SPECIFICATIONS FOR ADDITIONAL DATA.