

Plotted: 4/17/2021 12:22 PM by Reinke, Bryan File Name: P:\2020\2021\7xxx\2020_7098.0 - Poudre Schools 2021 Roof Recoating (800) Drawings Laurel 2020_7098-Laurel_A001 Plot.dwg

Copyright 2020. All rights reserved. No part of this document may be reproduced in any form or by any means without permission from Wiss, Janney, Elstner Associates, Inc. (WJE). WJE disclaims any responsibility for its unauthorized use.

Laurel Elementary School

Recoating of Existing Roofing System

Project:

Laurel Elementary School
Recoating of Existing Roofing System
1000 Locust St
Fort Collins, Colorado 80524

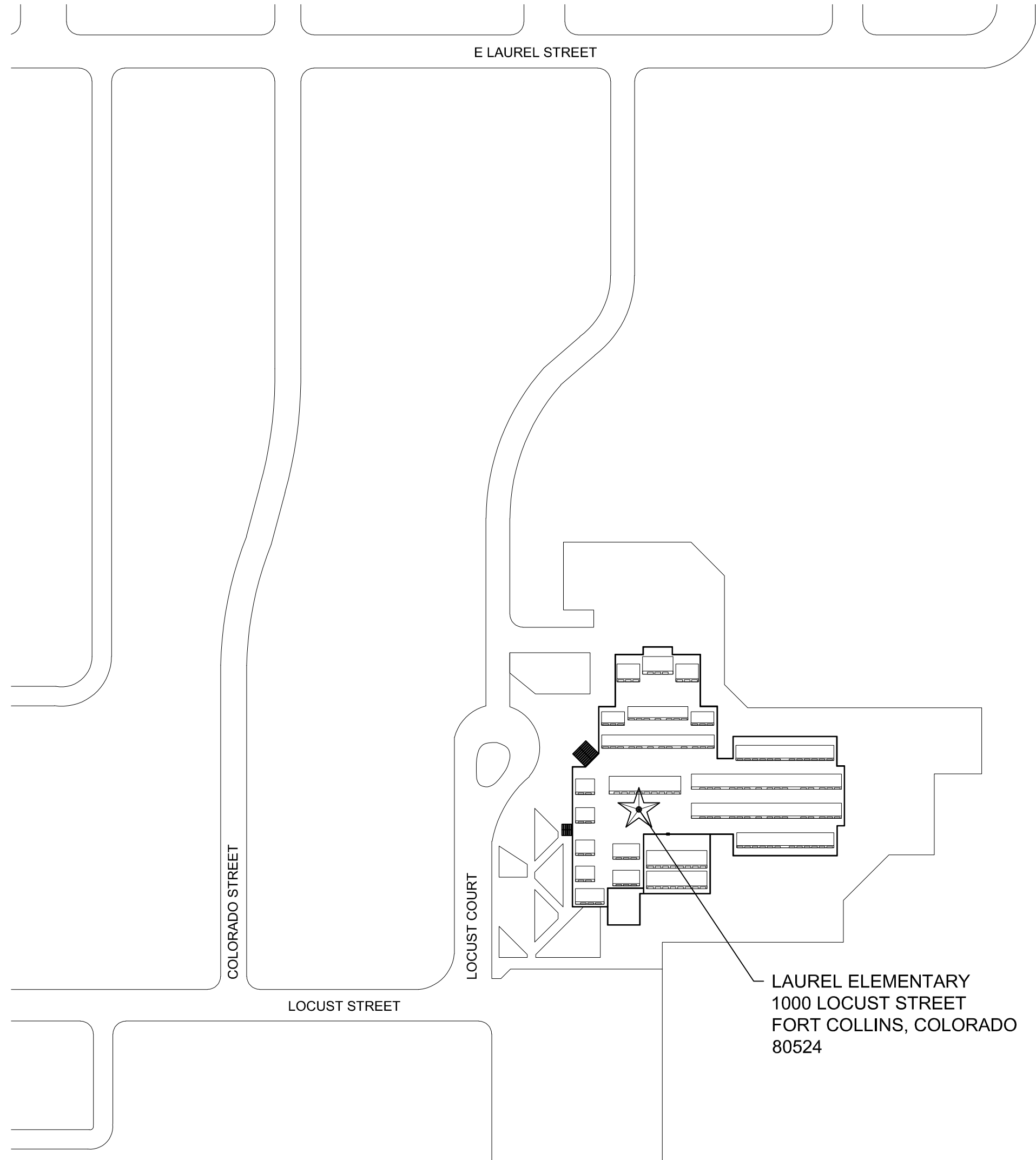
Client:

Poudre School District
2413 Laporte Avenue
Fort Collins, Colorado 80521

Consultant:

WJE

Wiss, Janney, Elstner Associates, Inc.
3609 South Wadsworth Blvd. Suite 400
Lakewood, Colorado
303.914.4300 tel | 303.914.3000 fax



INDEX TO DRAWINGS

A001	TITLE SHEET
A002	GENERAL NOTES
A101	ROOF PLAN
A501	ROOF DETAILS
A502	ROOF DETAILS

BUILDING CODES:

2018 INTERNATIONAL BUILDING CODE (IBC)
2018 INTERNATIONAL EXISTING BUILDING CODE (IEBC)
2018 INTERNATIONAL FIRE CODE (IFC)
2018 INTERNATIONAL ENERGY CONSERVATION CODE (IECC)
2018 INTERNATIONAL PLUMBING CODE (IPC)

ABBREVIATIONS:

(E)	EXISTING	RE:	REFER TO
EA	EACH	REQ'D	REQUIRED
EPS	EXTRUDED POLYSTYRENE	SIM	SIMILAR
FV	FIELD VERIFY	SF	SQUARE FEET
MAX	MAXIMUM	SPF	SPRAY POLYURETHANE FOAM
MFR	MANUFACTURER	TERM	TERMINATION
MIN	MINIMUM	TYP	TYPICAL
O.C.	ON CENTER	U.O.N.	UNLESS OTHERWISE NOTED
N.I.C.	NOT IN CONTRACT	w/	WITH

DESIGN CRITERIA

WIND SPEED: 150 mph Vult
ASCE: 7-16 - As Amended by the City of Fort Collins
TERRAIN CLASSIFICATION: Exposure B
BUILDING TYPE: 2A
RISK CATEGORY: III

FIRE SPRINKLER SYSTEM: YES
FIRE ALARM SYSTEM: YES

WJE

ENGINEERS
ARCHITECTS
MATERIALS SCIENTISTS

Wiss, Janney, Elstner Associates, Inc.
3609 South Wadsworth Boulevard, Suite 400
Lakewood, Colorado 80235
303.914.4300 tel | 303.914.3000 fax
www.wje.com

Headquarters & Laboratories: Northbrook, Illinois
Atlanta | Austin | Boston | Chicago | Cleveland | Dallas | Denver | Detroit
Honolulu | Houston | Los Angeles | Minneapolis | New Haven | New York
Philadelphia | Princeton | San Francisco | Seattle | South Florida | Washington, D.C.

Consultants

Project

Laurel Elementary

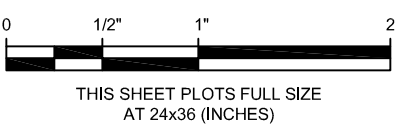
1000 Locust St
Fort Collins, Colorado

Client

Poudre School District

2413 Laporte Avenue
Fort Collins, Colorado

	4/20/2021	100% FOR CONSTRUCTION
Mark	Date	Description



Project No.	2020.4373
Date	04/20/2020
Drawn	BRS/BWR
Checked	SER/BWR
Scale	AS NOTED

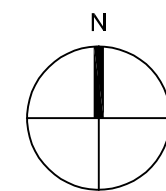
TITLE SHEET

Sheet Title

Sheet No.

A001

Sheet Title	A002
Sheet No.	













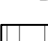


BUILDING INPUT DATA (ROOF AREA A-2)

MEAN ROOF HEIGHT20'-0" F.V.

PARAPET HEIGHT..... LESS THAN 36"

EXPOSURE CATEGORY.....Exposure B

APPROXIMATE AREA OF SPF.....29,340 SF

	NON-REMOVABLE MECH. CURB DETAIL 11/A502
	REMOVABLE MECH. CURB; DETAIL 11/A502
	PRIMARY AND OVERFLOW DRAIN DETAIL 12/A502
	OVERFLOW SCUPPER; DETAIL 8/A501
	ELECTRICAL DISCONNECT
	FLUE PIPE PENETRATION; DETAIL 13/A502
	PIPE PENETRATION; DETAIL 10/A502
	PARAPET WALL; DETAIL 5/A501
	UTILITY LINE
	ROOF ACCESS LADDER
	DIRECTION OF SLOPE
	ROOF AREA DESIGNATION
	STANDING SEAM METAL ROOF NOT IN CONTRACT

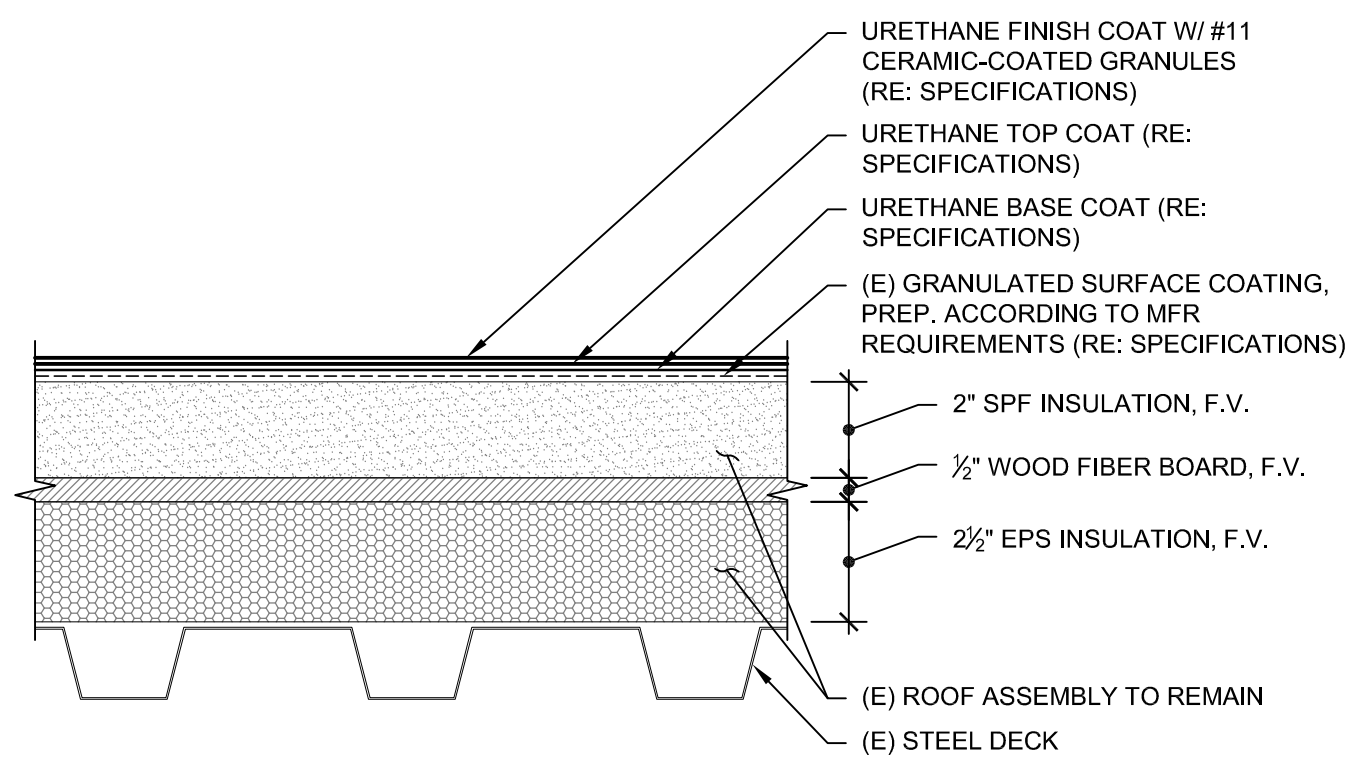
F PROVIDE TEMPORARY SUPPORT FOR EXISTING UTILITY LINES THROUGHOUT DURATION OF WORK. INSTALL NEW ADJUSTABLE SUPPORTS (DURA-BLOK ROOFTOP SUPPORT) AT INTERVALS NOT-TO-EXCEED 10 FEET AND ONE FOOT AWAY IN BOTH DIRECTIONS FROM BENDS. PAINT (E) GAS LINES SAFETY YELLOW. (E) CONNECTIONS SHALL BE MASKED AND NOT PAINTED SO THAT THEY CAN BE PROPERLY MAINTAINED AS NEEDED.

Sheet No.

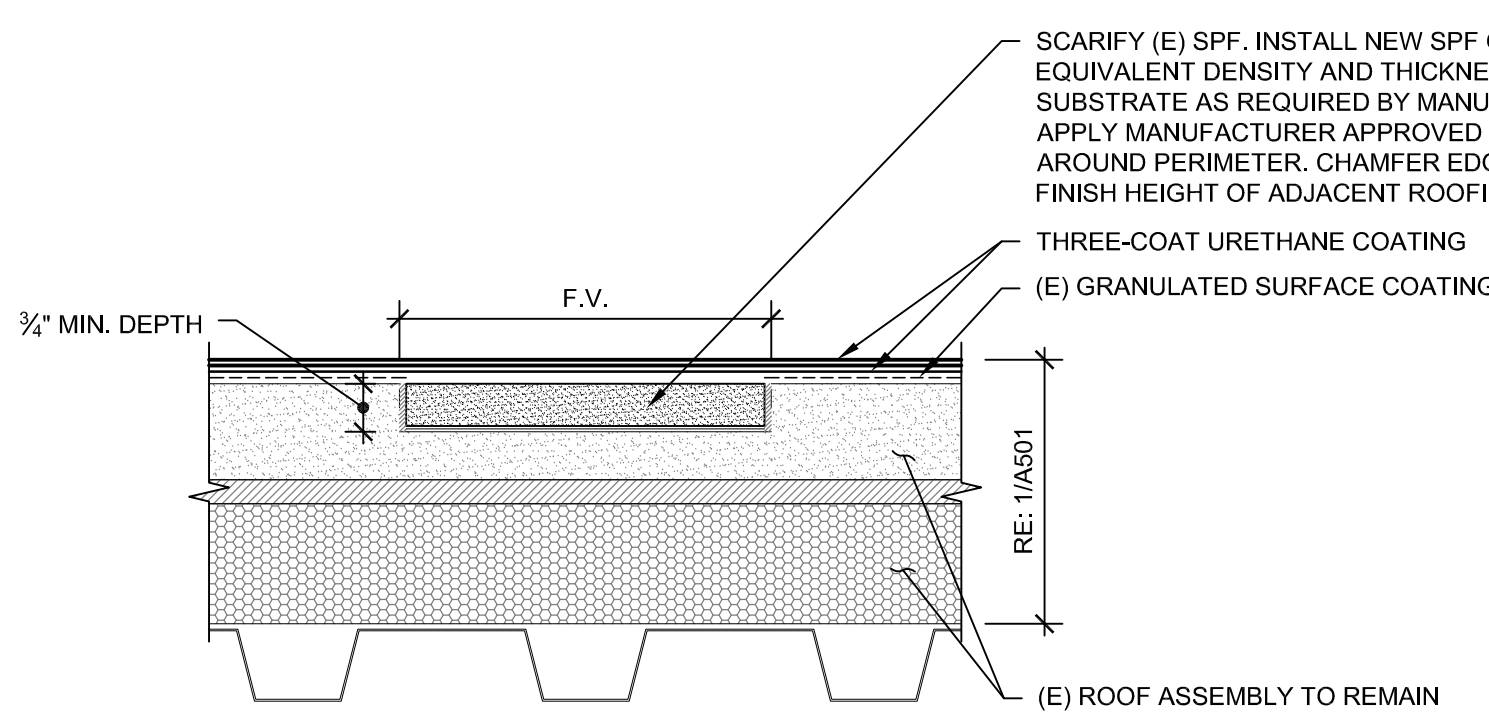
A101

Copyright 2021. All rights reserved. No part of this document may be reproduced in any form or by any means without permission from Wiss, Janney, Elstner Associates, Inc. (WJE). WJE disclaims any responsibility for its unauthorized use.

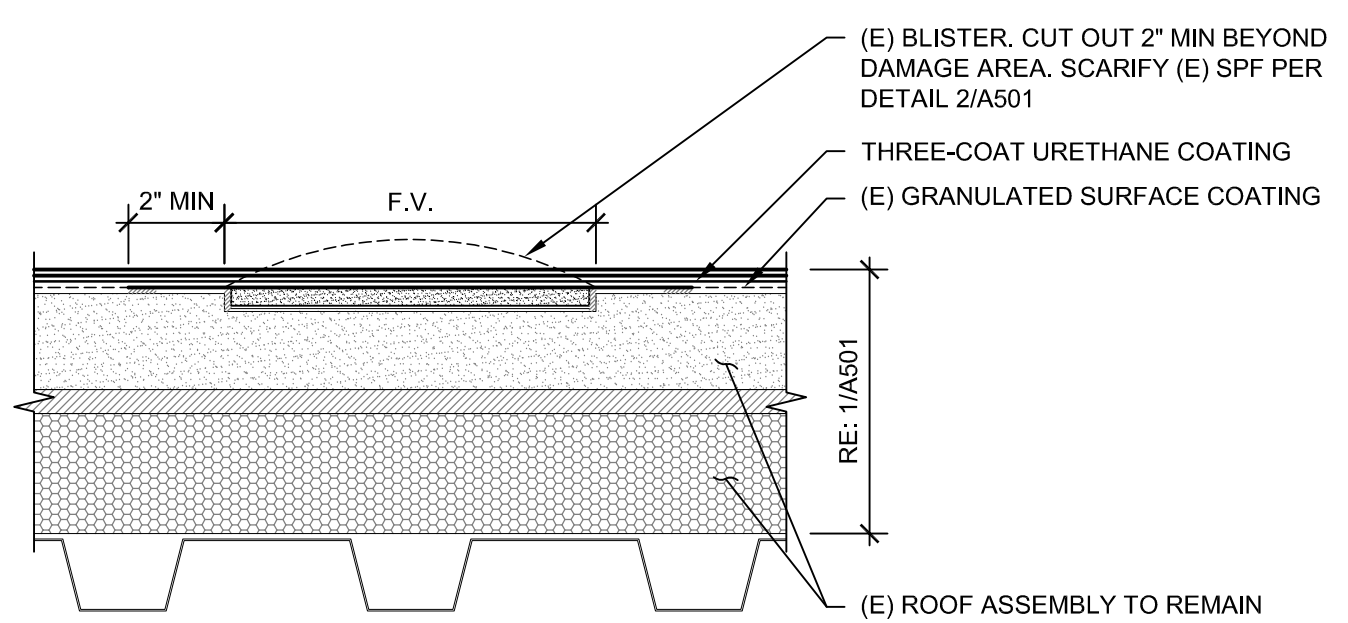
Printed: 4/17/2021 12:19 PM by Reinkens, Bryan File Name: P:\2020\2020\7xxx\2020_7098.0 - Poudre Schools 2021 Roof Recoating (R&R) Drawings Laurel Laurel Details.dwg



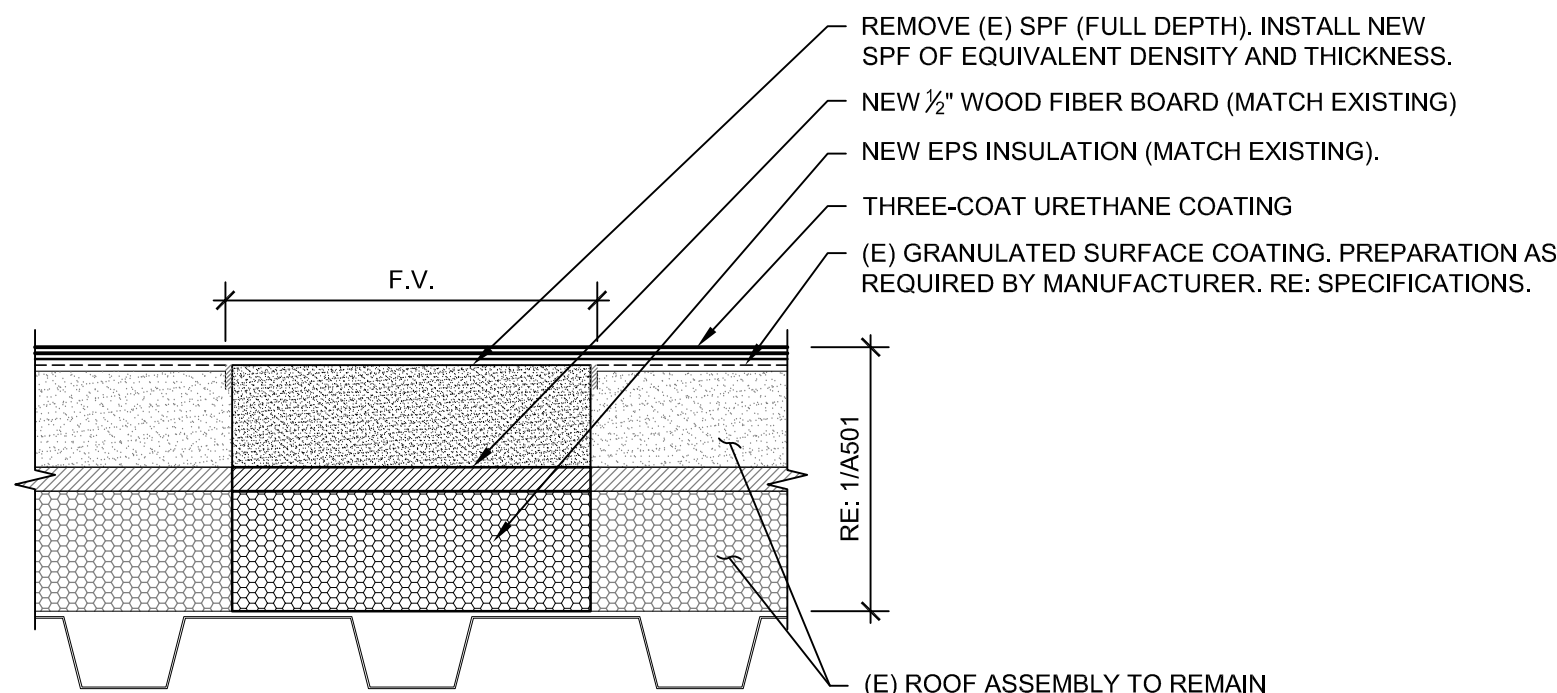
1 Typical Three-Coat Urethane Coating over Existing Roofing Assembly
SCALE: 3"=1'-0"



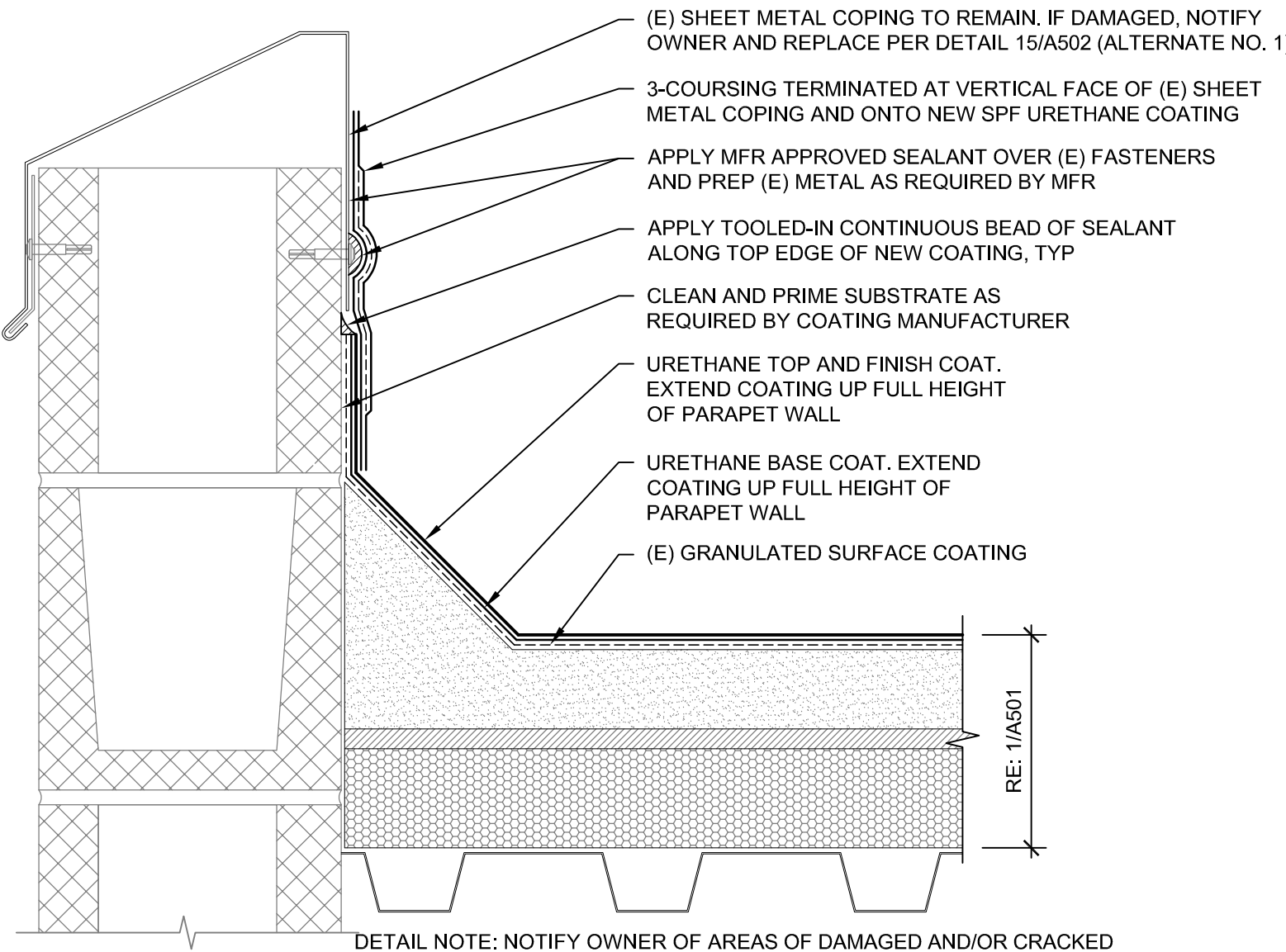
2 Coating Repair at Scarified Roof Areas (Partial Depth)
SCALE: 3"=1'-0"



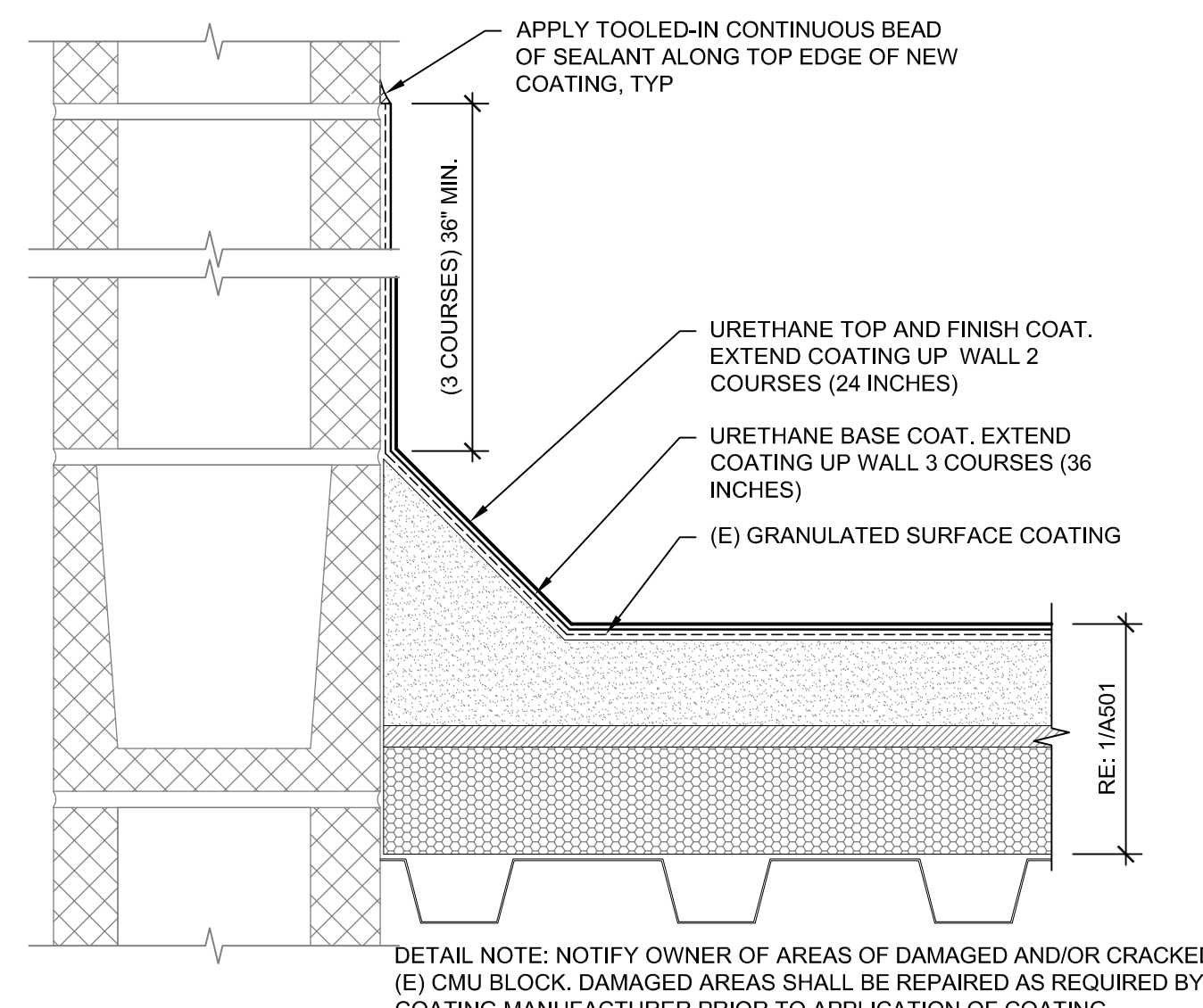
3 Coating Repairs at Localized Blister Locations
SCALE: 3"=1'-0"



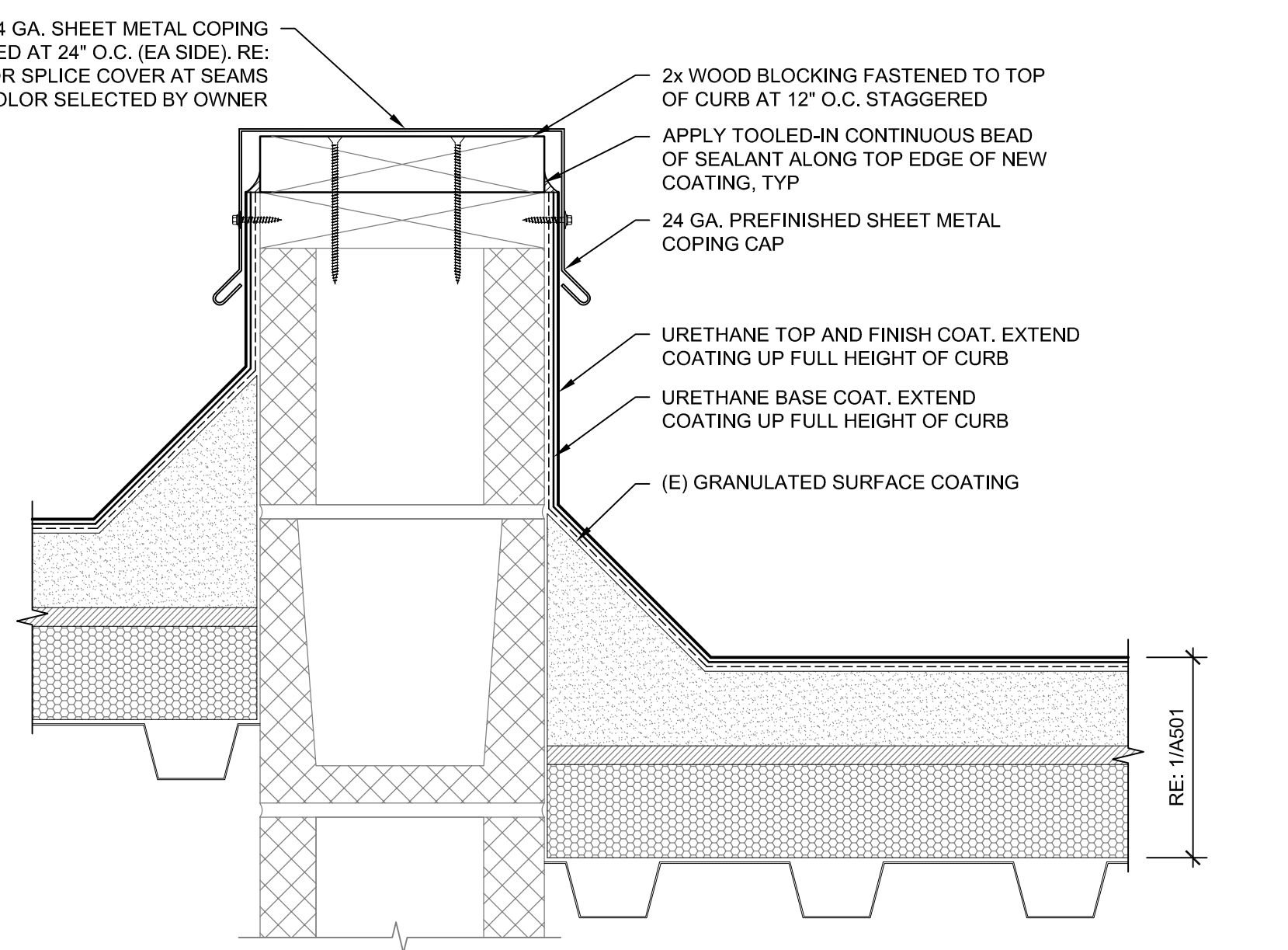
4 Full Depth Roofing System Repair
SCALE: 3"=1'-0"



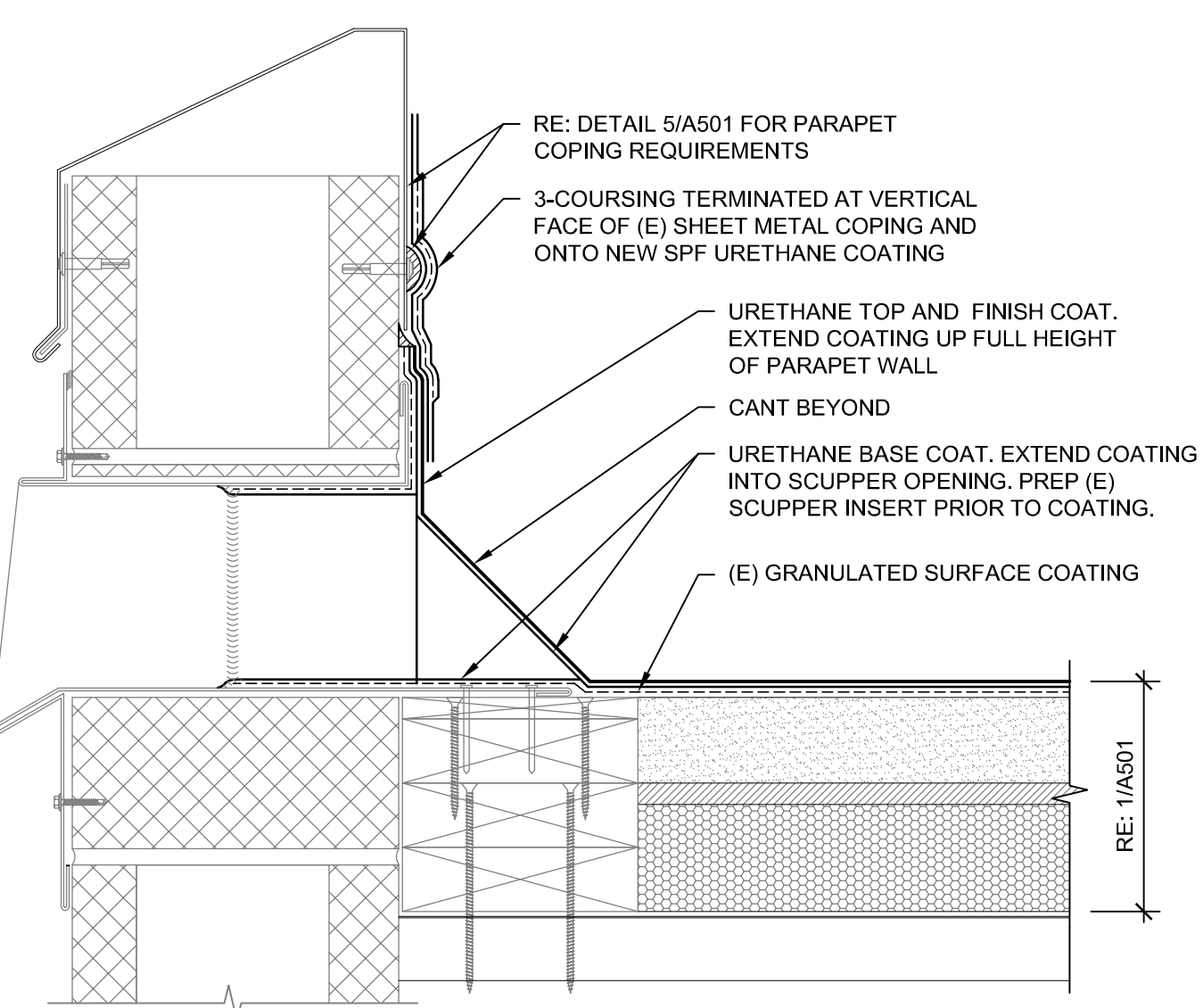
5 Termination at Existing Parapet Wall w/ New Coping Cap
SCALE: 3"=1'-0"



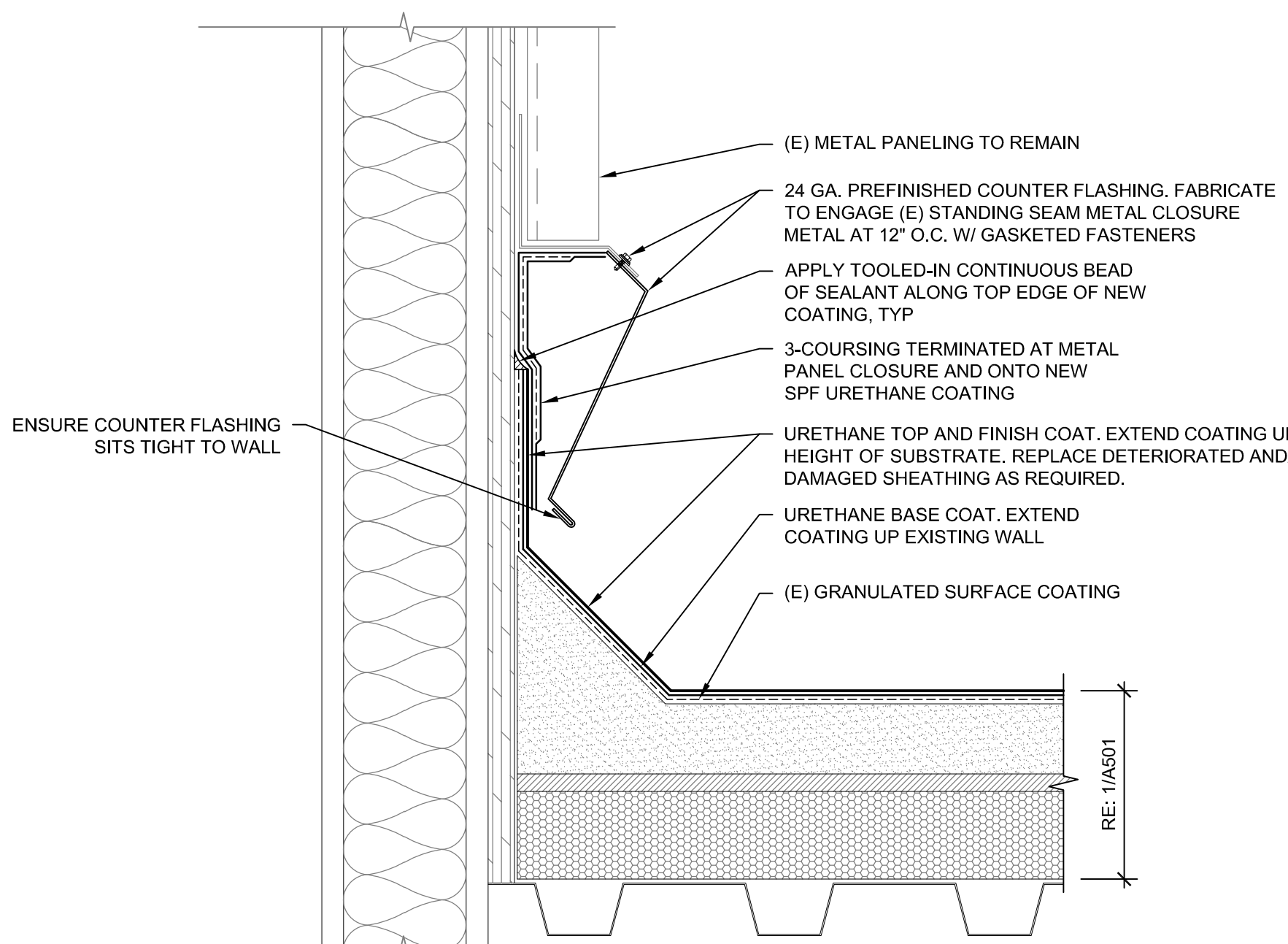
6 Typical Coating Termination at Existing CMU
SCALE: 3"=1'-0"



7 Termination at Area Divider Wall w/ New Coping Cap
SCALE: 3"=1'-0"



8 Termination at Existing Thru-Wall Scupper
SCALE: 3"=1'-0"



9 Termination and Counterflashing at Existing Monitor
SCALE: 3"=1'-0"

WJEENGINEERS
ARCHITECTS
MATERIALS SCIENTISTS

Wiss, Janney, Elstner Associates, Inc.
3609 South Wadsworth Boulevard, Suite 400
Lakewood, Colorado 80235
303.914.4300 tel | 303.914.3000 fax
www.wje.com

Headquarters & Laboratories: Northbrook, Illinois
Atlanta | Austin | Boston | Chicago | Cleveland | Dallas | Denver | Detroit
Honolulu | Houston | Los Angeles | Minneapolis | New Haven | New York
Philadelphia | Princeton | San Francisco | Seattle | South Florida | Washington, D.C.

Consultants

Project
Laurel Elementary

1000 Locust St
Fort Collins, Colorado

Client
Poudre School District

2413 Laporte Avenue
Fort Collins, Colorado

Mark	Date	Description
	4/14/2021	100% FOR CONSTRUCTION

01/2/2

THIS SHEET PLOTS FULL SIZE AT 24x36 (INCHES)

Project No. 2020.4373

Date 04/20/2020

Drawn BRS/BWR

Checked SER/BWR

Scale AS NOTED

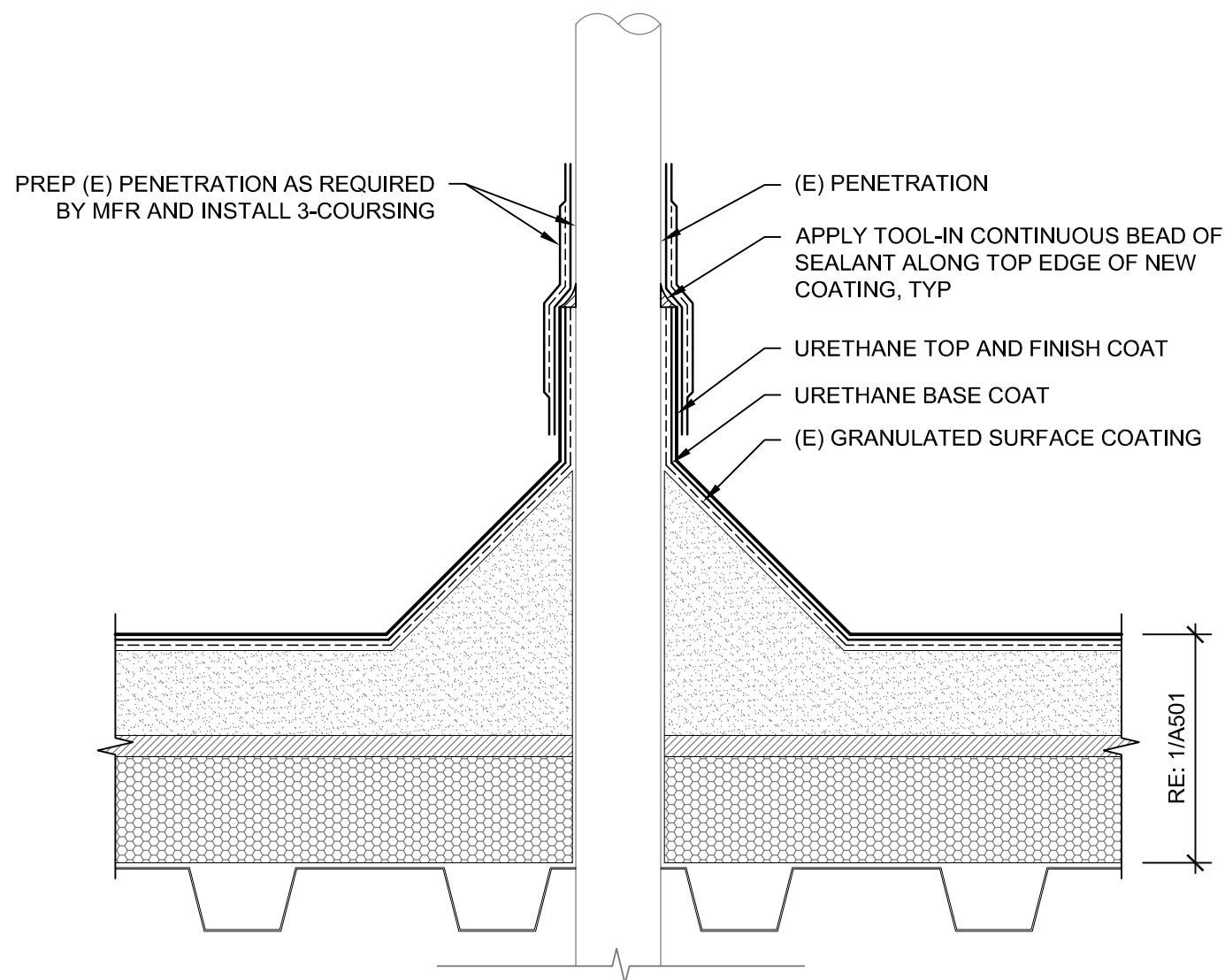
ROOFING DETAILS

Sheet Title

Sheet No. **A501**

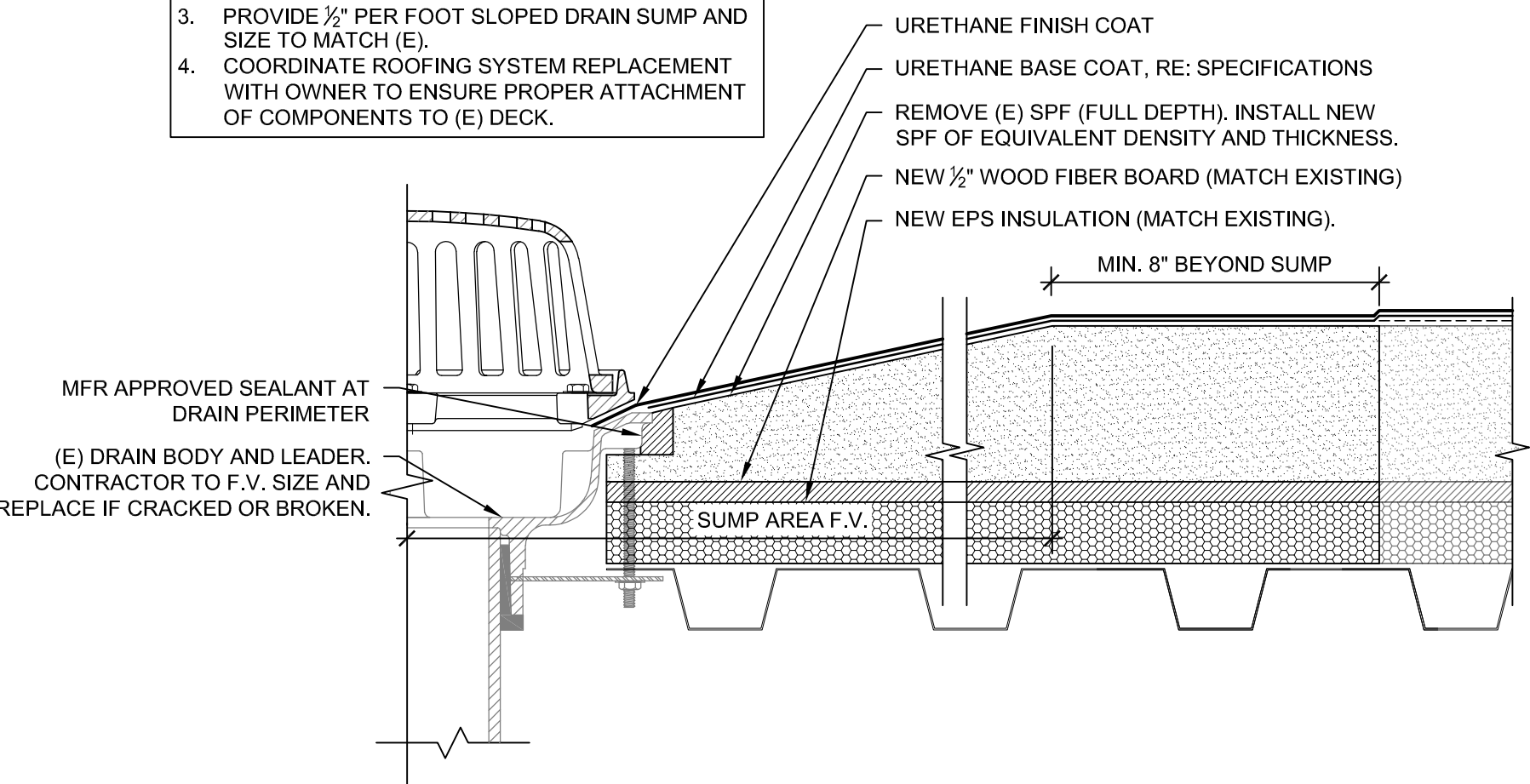
Copyright 2021. All rights reserved. No part of this document may be reproduced in any form or by any means without permission from Wiss, Janney, Elstner Associates, Inc. (WJE). WJE disclaims any responsibility for its unauthorized use.

Printed: 4/17/2021 12:18 PM by Reinke, Bryan File Name: P:\2020\2020\7xxx\2020_7098.0 - Poudre Schools 2021 Roof Recoating (BRS) Drawings Laurel Laurel Details.dwg

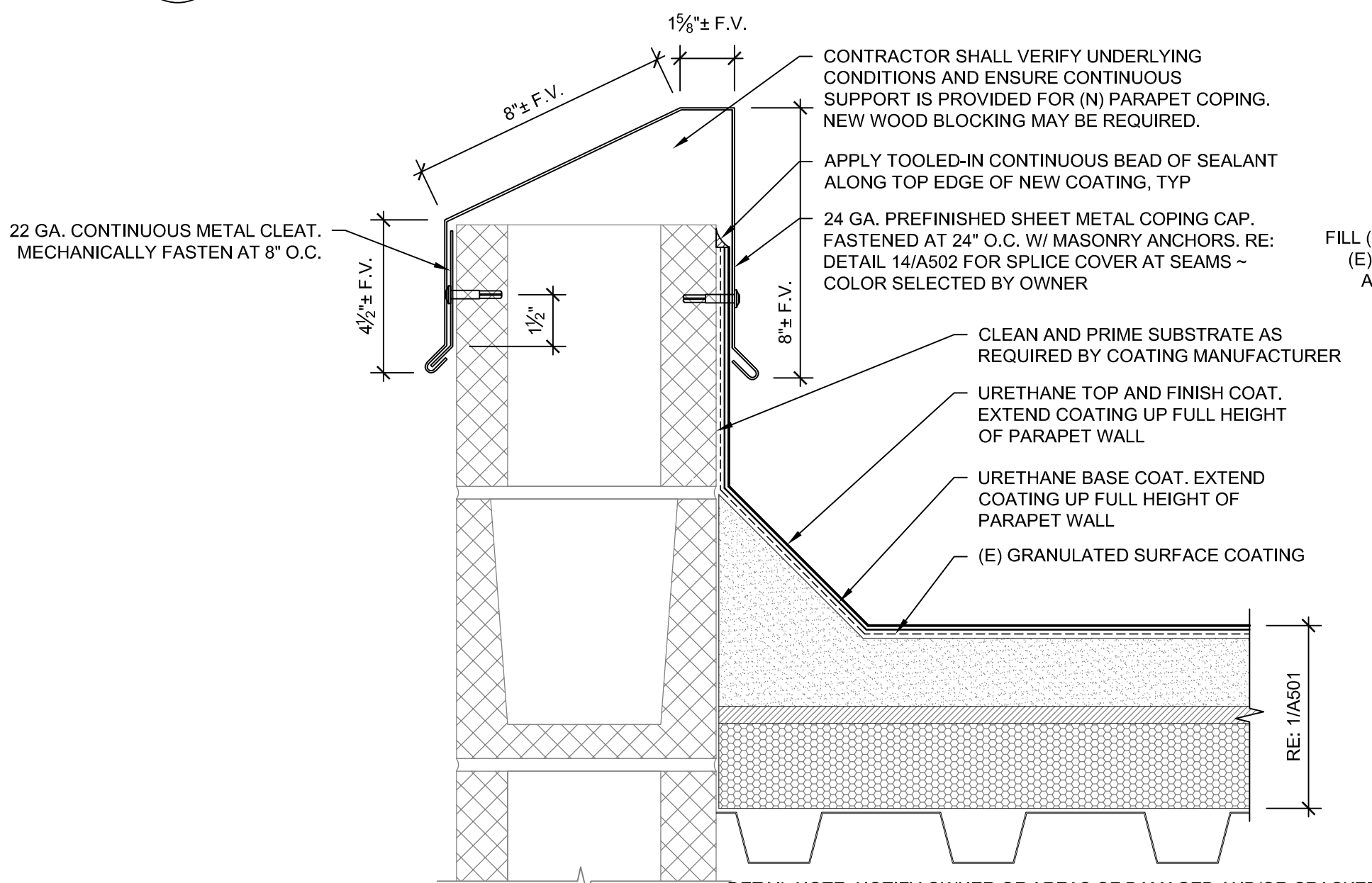


10 Typical Termination at Existing Pipe Penetration
SCALE: 3"=1'-0"

DETAIL NOTE:
1. CONTRACTOR SHALL TEST DRAINS TO ENSURE THEY ARE FREE-FLOWING AND IN WORKING ORDER PRIOR TO PERFORMING WORK AND AT THE TIME OF SUBSTANTIAL COMPLETION. (RE: GENERAL NOTES AND SPECIFICATIONS)
2. REPLACE EXISTING CAST IRON DRAIN BASKET AND/OR CLAMPING RING IF MISSING OR BROKEN.
3. PROVIDE 1/2" PER FOOT SLOPED DRAIN SUMP AND SIZE TO MATCH (E).
4. COORDINATE ROOFING SYSTEM REPLACEMENT WITH OWNER TO ENSURE PROPER ATTACHMENT OF COMPONENTS TO (E) DECK.

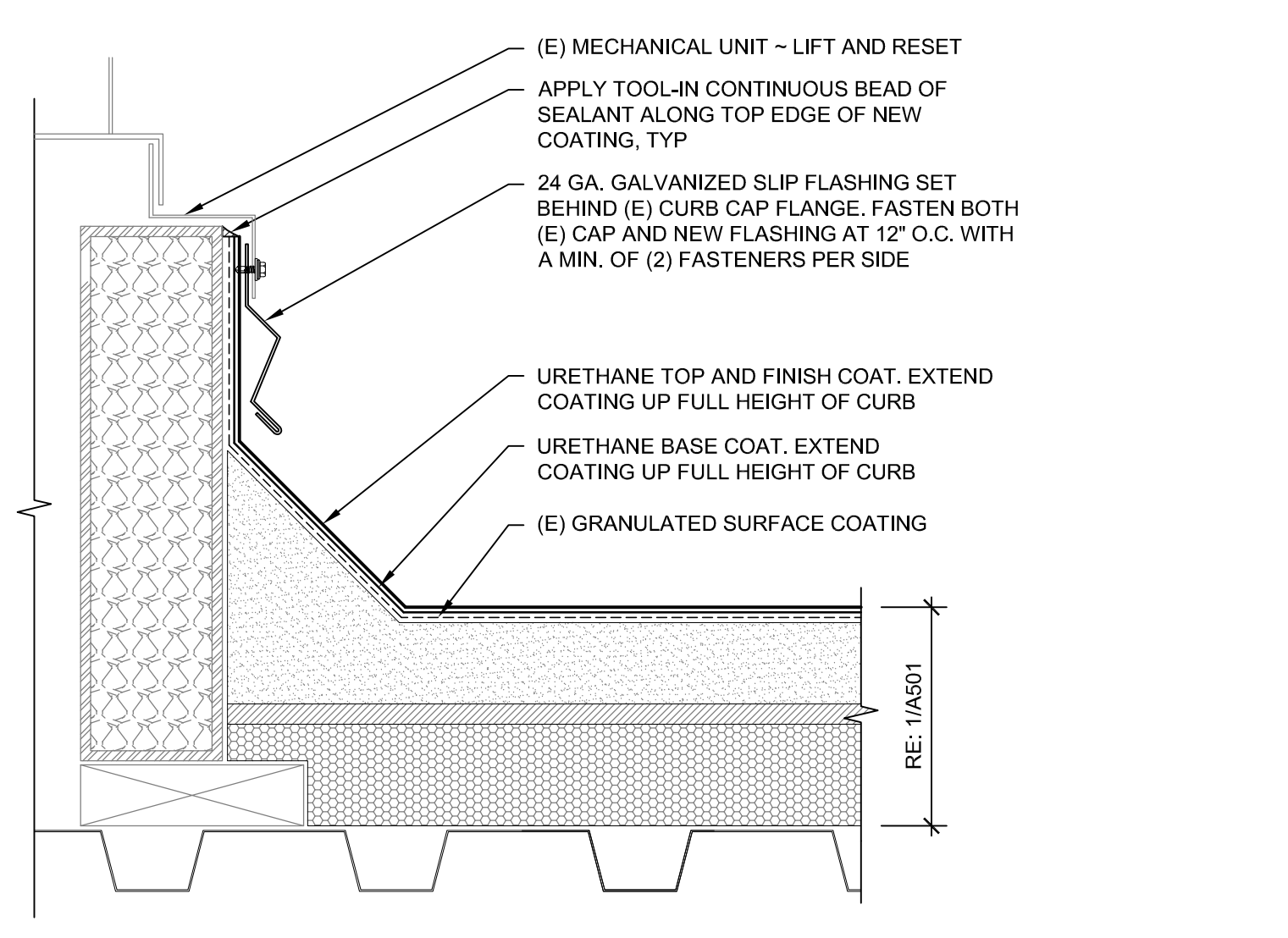


12 Typical Termination at Existing Drain
SCALE: 3"=1'-0"

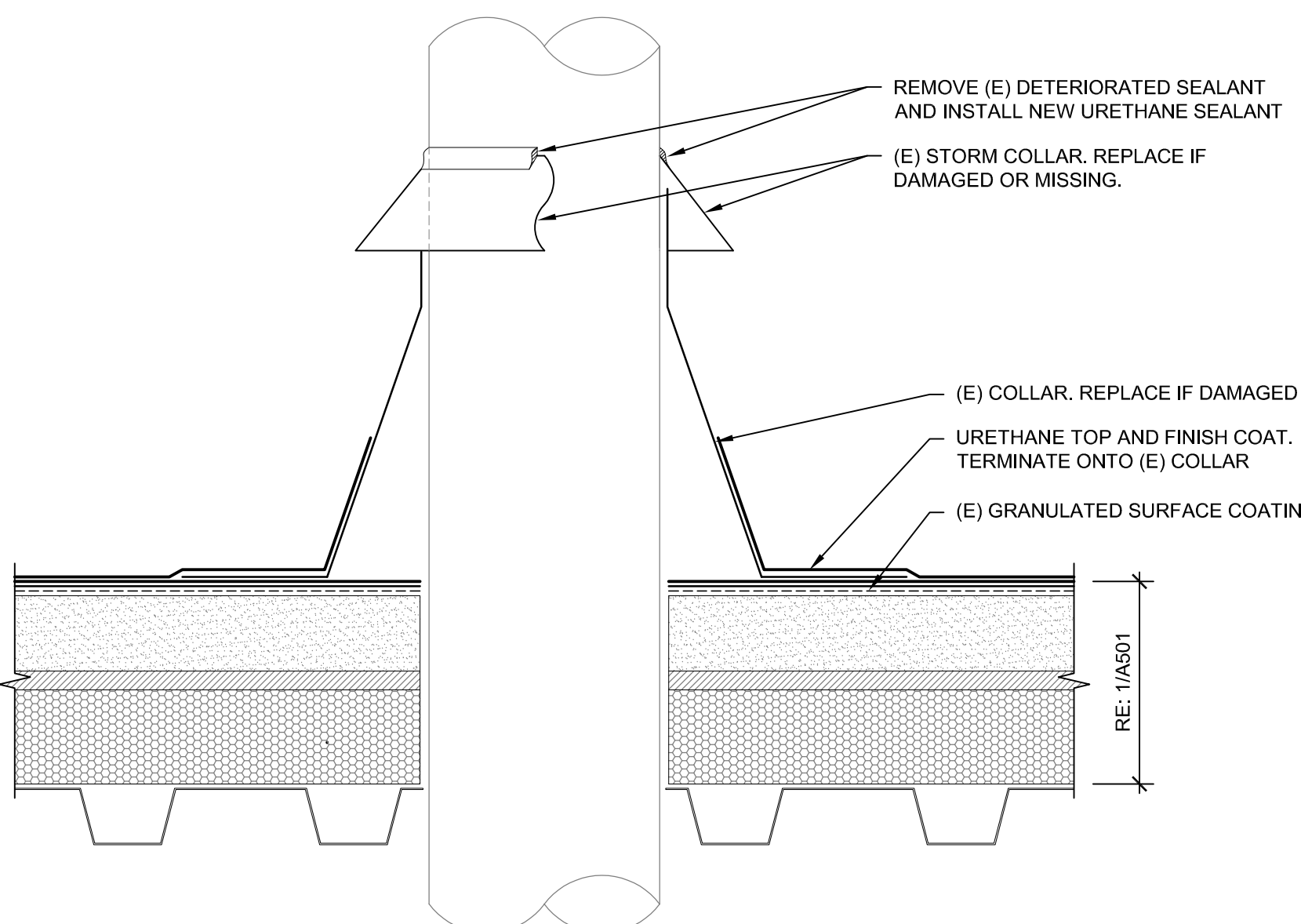


15 New Sheet Metal Coping cap at Existing Parapet Wall (Alternate No. 1)
SCALE: 3"=1'-0"

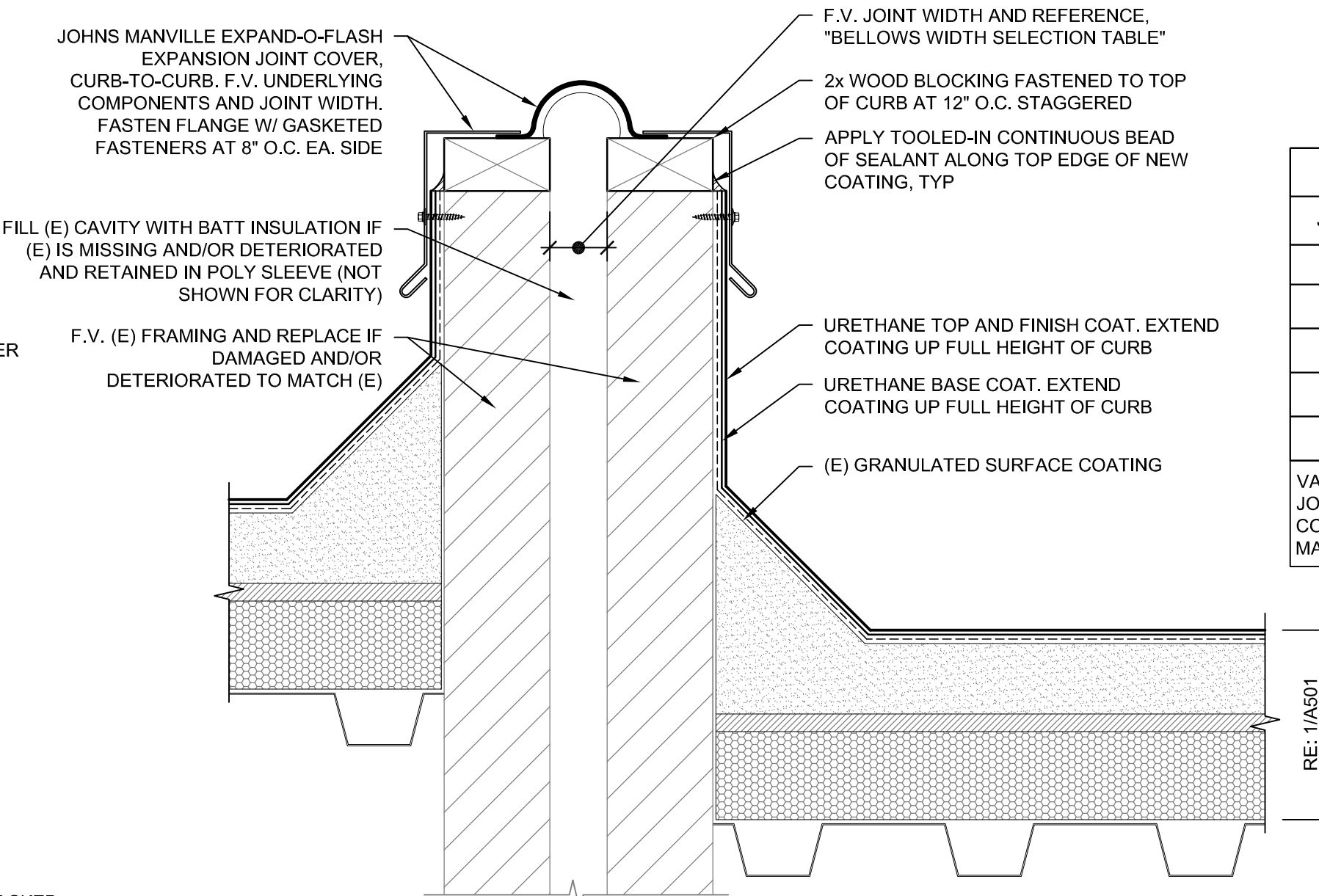
DETAIL NOTE: NOTIFY OWNER OF AREAS OF DAMAGED AND/OR CRACKED (E) CMU BLOCK. DAMAGED AREAS SHALL BE REPAIRED AS REQUIRED BY COATING MANUFACTURER PRIOR TO APPLICATION OF COATING.



11 Typical Termination at Existing (Removable) Mechanical Curb
SCALE: 3"=1'-0"



13 Typical Termination at Flue Pipe
SCALE: 3"=1'-0"

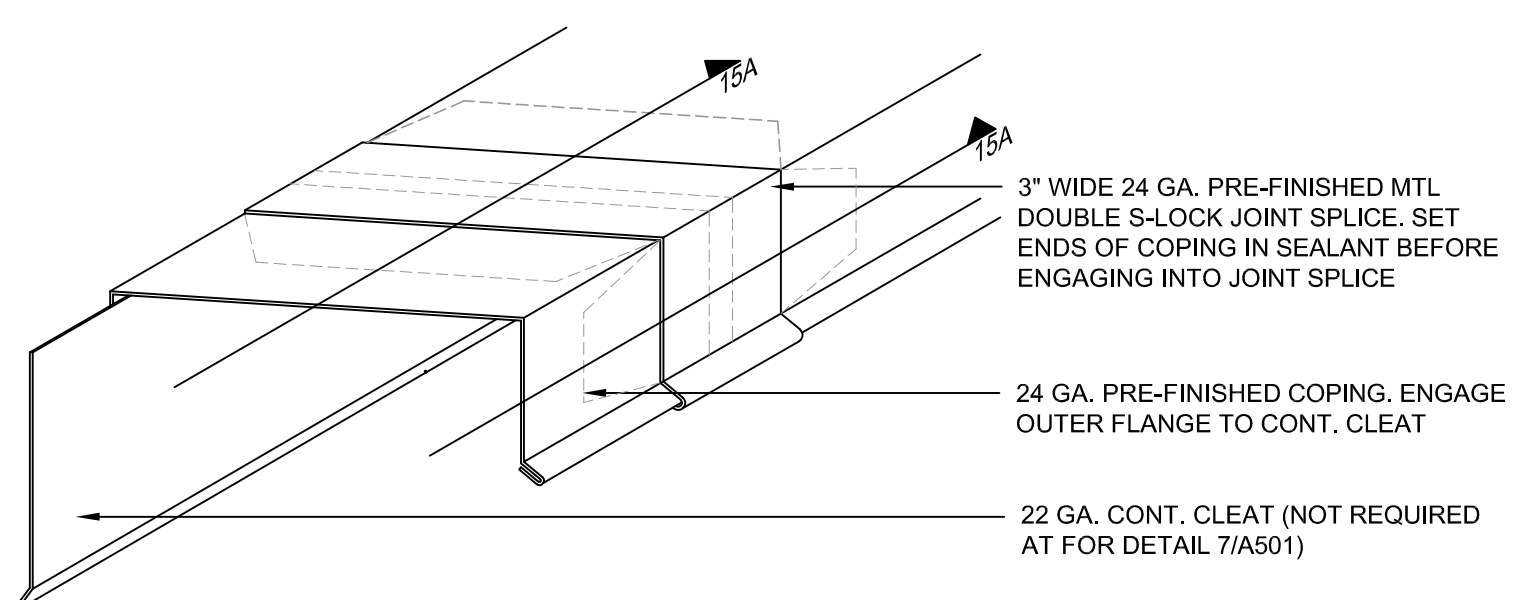


16 New Curb-to-Curb Expansion Joint Flashing (Alternate No. 2)
SCALE: 3"=1'-0"

BELLOWS WIDTH SELECTION TABLE	
JOINT WIDTH RANGES	BELLOWS SIZE (INCHES)
1" - 2 1/2"	4"
2 1/2" - 4"	6"
4" - 5 1/4"	8"
5 1/4" - 6 5/8"	10"
6 5/8" - 8"	12"

VALUES INCLUDED WITHIN TABLE ARE PROVIDED BY JOHNS MANVILLE. CONTRACTOR SHALL VERIFY FIELD CONDITIONS WITH THE MFR PRIOR TO SELECTION OF MATERIALS.

14A Double S-Lock Joint Splice Profile
SCALE: 3"=1'-0"



14 Splice Cover at Coping Joint
SCALE: 3"=1'-0"

WJE ENGINEERS
ARCHITECTS
MATERIALS SCIENTISTS

Wiss, Janney, Elstner Associates, Inc.
3609 South Wadsworth Boulevard, Suite 400
Lakewood, Colorado 80235
303.914.4300 tel | 303.914.3000 fax
www.wje.com

Headquarters & Laboratories: Northbrook, Illinois
Atlanta | Austin | Boston | Chicago | Cleveland | Dallas | Denver | Detroit
Honolulu | Houston | Los Angeles | Minneapolis | New Haven | New York
Philadelphia | Princeton | San Francisco | Seattle | South Florida | Washington, D.C.

Consultants

Project

Laurel Elementary

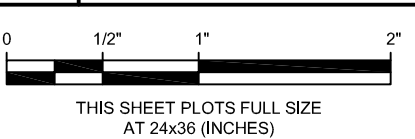
1000 Locust St
Fort Collins, Colorado

Client

Poudre School District

2413 Laporte Avenue
Fort Collins, Colorado

Mark	Date	Description
	4/20/2021	100% FOR CONSTRUCTION



Project No.	2020.4373
Date	04/20/2020
Drawn	BRS/BWR
Checked	SER/BWR
Scale	AS NOTED

ROOFING DETAILS

Sheet Title

Sheet No.

A502