



POUDRE SCHOOL DISTRICT

POUDRE HIGH SCHOOL

LONG DRAW CREEK HALLWAY IMPROVEMENTS

FORT COLLINS, COLORADO 80521

OWNER:

POUDRE SCHOOL DISTRICT
2445 LAPORTE AVENUE
FORT COLLINS, COLORADO 80521
PHONE: 970|490|3017
EMAIL: jlee@psdschools.org

Jason Lee
Construction Project Manager

ARCHITECT:

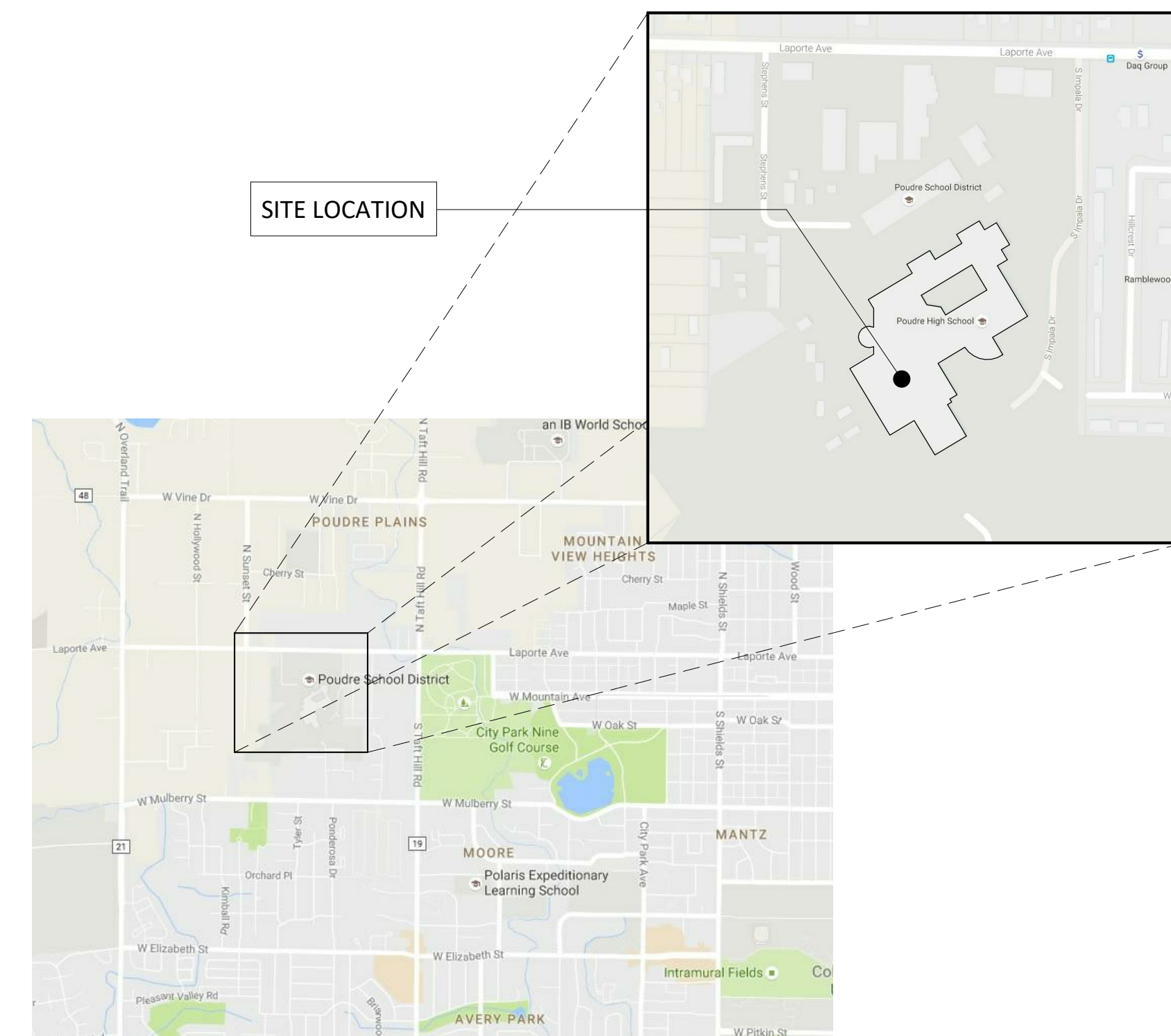
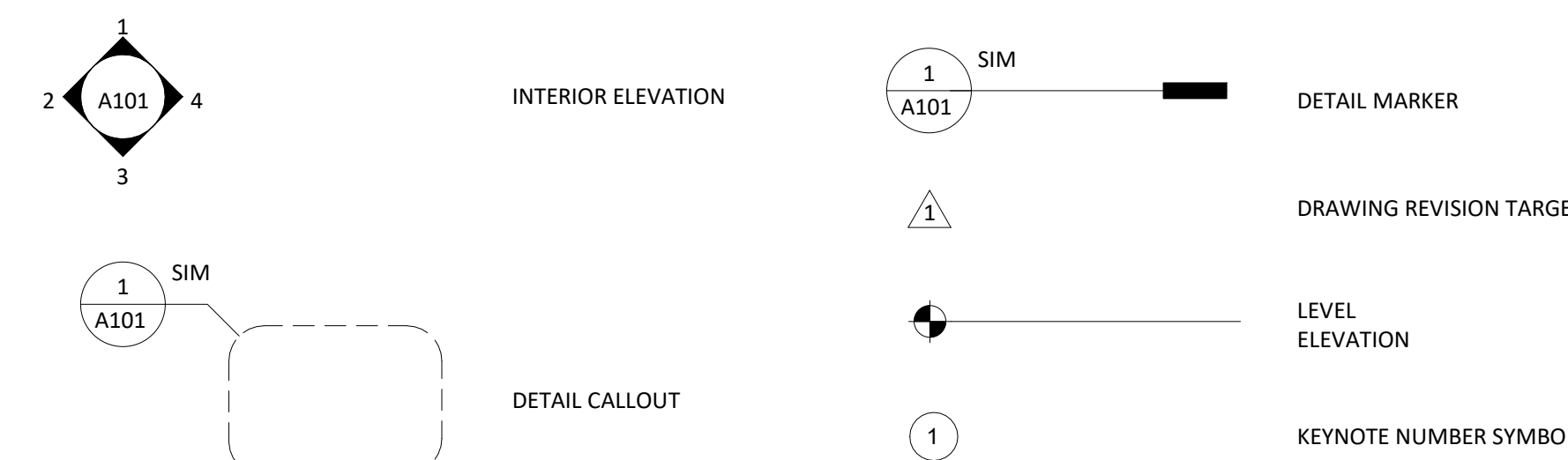
KALERT CONSULTING GROUP | LLC
2429 STONECREST DRIVE
FORT COLLINS, COLORADO 80521
PHONE: 970|412|3049
EMAIL: tomkalert@gmail.com

Tom Kalert, AIA
Architect

ABBREVIATIONS:

ACOUS.	ACOUSTICAL	MATL.	MATERIAL
A.F.F.	ABOVE FINISH FLOOR	MECH.	MECHANICAL
ARCH.	ARCHITECTURAL	MFP.	MECHANICAL, ELECTRICAL, PLUMBING
		MFR.	MANUFACTURER
BD.	BOARD	MIN.	MINIMUM
BLDG.	BUILDING	MISC.	MISCELLANEOUS
BLKG.	BLOCKING	MTD.	MOUNTED
BOT.	BOTTOM		
BSMT.	BASEMENT	(N)	NEW
		N.	NORTH
C.J.	CONTROL JOINT	N.E.	NORTHEAST
CLG.	CEILING	N.I.C.	NOT IN CONTRACT
CLO.	CLOSET	N.T.S.	NOT TO SCALE
CLR.	CLEAR		
COL.	COLUMN	O.C.	ON CENTER
CONC.	CONCRETE	O.D.	OUTSIDE DIAMETER
CONST.	CONSTRUCTION	OPNG.	OPENING
CONT.	CONTINUOUS	OPP.	OPPOSITE
CPT.	CARPET	OPP.HD.	OPPOSITE HAND
		P.L.	PROPERTY LINE
DBL.	DOUBLE	P.LAM.	PLASTIC LAMINATE
DEPT.	DEPARTMENT	P.T.D.	PAPER TOWEL DISPENSER
DIA.	DIAMETER		
DIM.	DIMENSION	R.C.P.	REFLECTED CEILING PLAN
DIV'D.	DIVIDED	R.D.	ROOF DRAIN
DN.	DOWN	REQ'D.	REQUIRED
DR.	DOOR	R.H.	RIGHT HAND
DWG.	DRAWING	R.O.W.	RIGHT OF WAY
(E)	EXISTING	S	SOUTH
EA.	EACH	S.E.	SOUTH EAST
E	EAST	SECT.	SECTION
E.J.	EXPANSION JOINT	S.E.D.	SEE ELECTRICAL DRAWINGS
ELEC.	ELECTRICAL	S.F.	SQUARE FOOT
EP.	ELECTRICAL PANEL	SHT.	SHEET
EQ.	EQUAL	S.L.D.	SEE LANDSCAPE DRAWINGS
EQUIP.	EQUIPMENT	S.M.D.	SEE MECHANICAL DRAWINGS
		S.P.D.	SEE PLUMBING DRAWINGS
F.A.	FIRE ALARM	SPECS.	SPECIFICATIONS
F.C.P.	FIRE CONTROL PANEL	S.S.D.	SEE STRUCTURAL DRAWINGS
F.D.	FLOOR DRAIN	STOR.	STORAGE
FDN.	FOUNDATION	STRUCT.	STRUCTURAL
F.F.	FINISH FLOOR		
F.F.E.	FINISH FLOOR ELEVATION	TEMP.	TEMPERED
F.E.C.	FIRE EXTINGUISHER CAB.	T & G	TONGUE AND GROOVE
FIN.	FINISH	T.O.P.	TOP OF PLATE
FIXT.	FIXTURE	T.O.W.	TOP OF WALL
FL.	FLOOR	T.P.	TOILET PARTITION
F.O.F.	FACE OF FINISH	T.O.	TOP OF
F.O.S.	FACE OF STUD	TYP.	TYPICAL
FR.	FRAME		
FTG.	FOOTING	U.B.C.	UNIFORM BUILDING CODE
		U.L.	UNDERWRITER'S LABORATORY
GA.	GAUGE	U.O.N.	UNLESS OTHERWISE NOTED
GALV.	GALVANIZED		
GYP.	GYPSPUM	V.C.T.	VINYL COMPOSITION TILE
		VERT.	VERTICAL
HDR.	HEADER	VEST.	VESTIBULE
HDWE.	HARDWARE	V.I.F.	VERIFY IN FIELD
HORIZ.	HORIZONTAL		
		W.	WEST
I.D.	INSIDE DIAMETER	W/	WITH
INSUL.	INSULATION	W.C.	WATER CLOSET
INT.	INTERIOR	WD.	WOOD
		WDW.	WINDOW
JAN.	JANITOR	W/O	WITHOUT
JT.	JOINT	WT.	WEIGHT
		YD.	YARD
LAV.	LAVATORY		
LOUV.	LOUVER		
LT.	LIGHT		

SYMBOLS LEGEND:



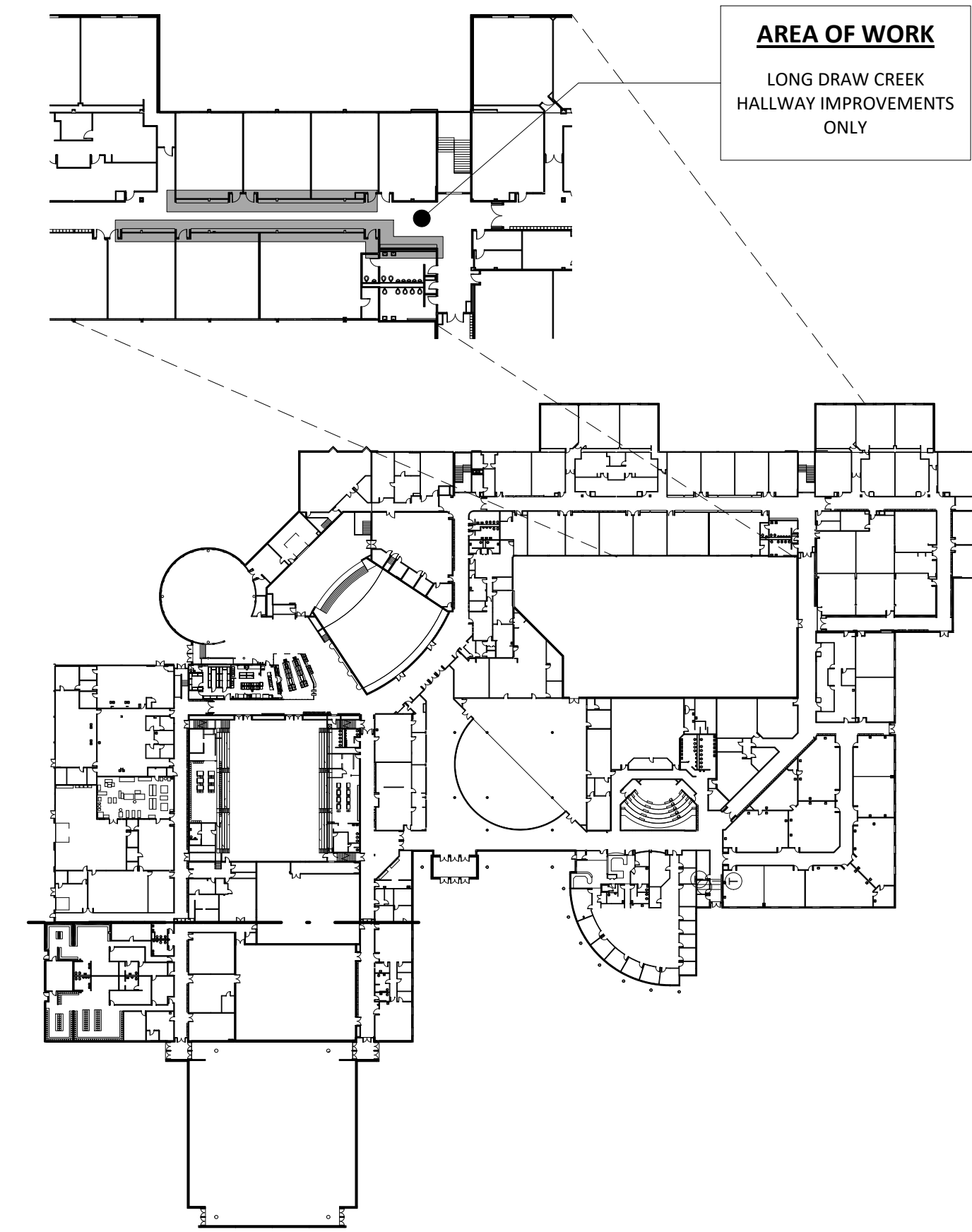
VICINITY MAP:

NOT TO SCALE



DRAWING INDEX:

A1.0	TITLE SHEET, VICINITY MAP, KEY PLAN AND CODE INFORMATION
A1.1	DEMOLITION AND NEW FLOOR PLANS
A1.2	INTERIOR ELEVATIONS AND DETAILS
A2.1	PROJECT SPECIFICATIONS
A2.2	PROJECT SPECIFICATIONS
A2.3	PROJECT SPECIFICATIONS



CODE USED:	2021 IBC, IFC, IMC, IEBC, IECC, IRC, 2018 IFGC, 2020 NEC, 2018 COLORADO PLUMBING CODE ICC/ANSI A117.1 - 2009 ACC. STANDARDS
BUILDING OWNER:	POUDRE SCHOOL DISTRICT
BUILDING OCCUPANCY:	E
BUILDING AREA:	262,300 SF
EXISTING CONSTRUCTION TYPE:	II-B - PER 2015 IBC
NUMBER OF STORIES:	2
BUILDING HEIGHT:	VARIES
FIRE RATED ASSEMBLIES:	EXISTING TO REMAIN
FIRE PROTECTION:	EXISTING FIRE ALARM
AREA OF WORK:	LESS THAN 400 SF
ALTERATION LEVEL:	LEVEL 2 - PER 2015 IEBC CHAPTER 5, 503.1

KEY PLAN AND CODE INFORMATION:

NOT TO SCALE



SHEET CONTENTS
TITLE SHEET, VICINITY MAP, KEY PLAN AND CODE INFORMATION

POUDRE HIGH SCHOOL
LONG DRAW CREEK
HALLWAY IMPROVEMENTS



NO.	BY	DESCRIPTION	DATE
1	DAM	ISSUE FOR PERMIT	
2	KCG	REVISIONS	
3			

DATE: 02.04.22
SHEET NO.: A1.0

KCG | LLC
KALERT | Consulting Group, LLC
2429 Stonecrest Drive
Fort Collins, Colorado 80521
tomkalert@gmail.com

GENERAL NOTES:

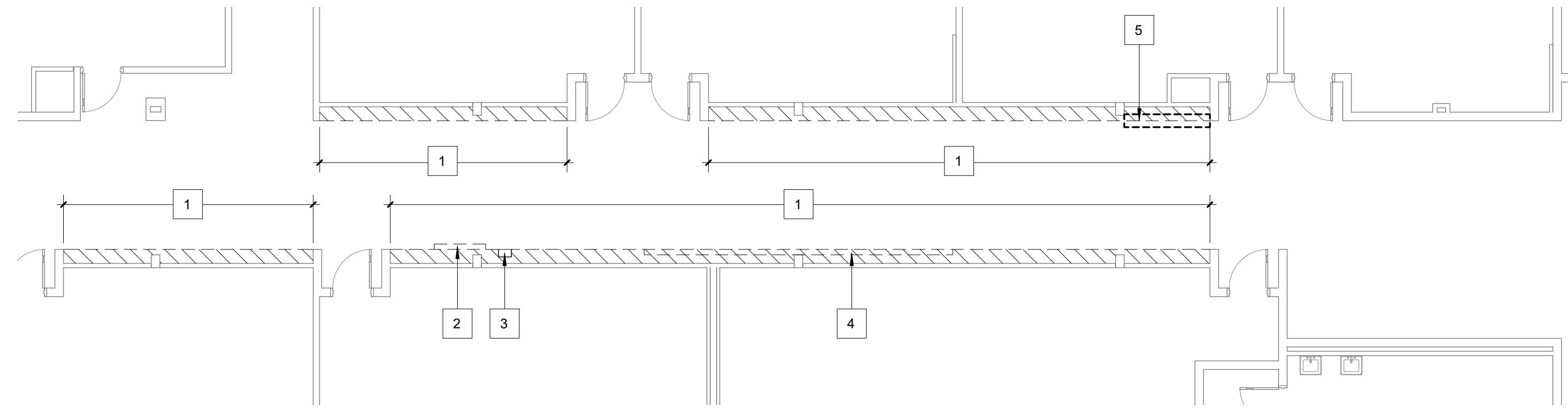
- A. SCOPE OF WORK TO INCLUDE INTERIOR LONG DRAW HALLWAY IMPROVEMENTS ONLY
- B. CONTRACTOR TO FIELD VERIFY ALL EXISTING SITE CONDITIONS AND SHALL INFORM ARCHITECT AND OWNER OF ANY MAJOR DISCREPANCIES
- C. PATCH, REPAIR AND PAINT ALL EXISTING INTERIOR SURFACES - UNLESS NOTED OTHERWISE

KEY NOTES:

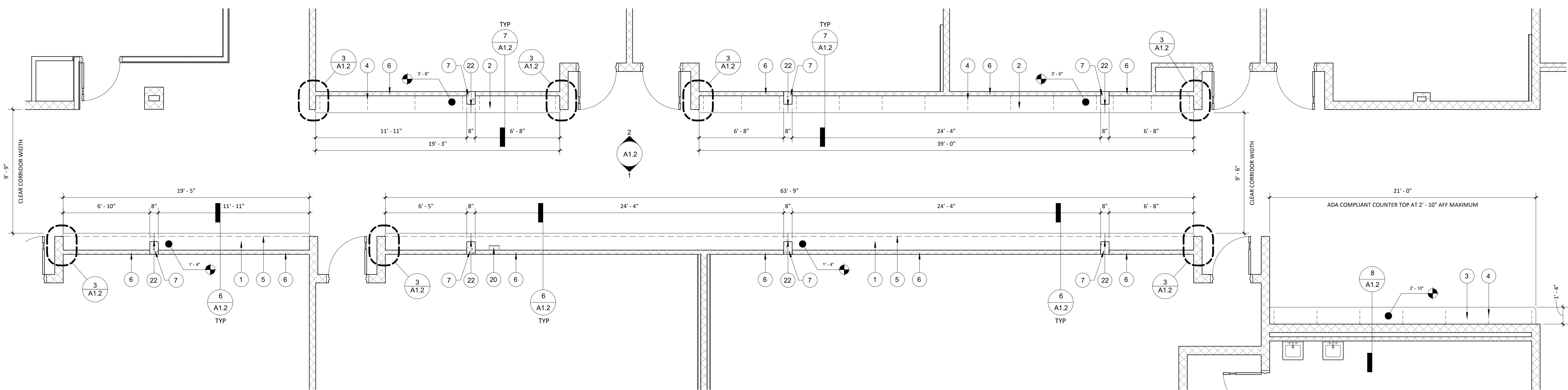
- 1. NEW SOLID SURFACE BENCH SEATING AT SOUTH SIDE OF HALLWAY - SEE DETAIL
- 2. NEW SOLID SURFACE STANDING WORK SURFACE AT NORTH SIDE OF HALLWAY - SEE DETAIL
- 3. NEW SEATED/ADA COMPLIANT WORK SURFACE AT 2' - 10"
- 4. PROVIDE HEAVY DUTY WALL MOUNTED UNDER COUNTER BRACKET SUPPORTS EQUALLY SPACED AS SHOWN
- 5. LINE OF WALL BELOW - SEE DETAIL
- 6. EXISTING MASONRY WALL - CLEAN, PATCH AND REPAIR AS NEEDED FROM DEMOLITION - PROVIDE (2) COATS OF MASONRY FILLER AND PAINT TO MATCH EXISTING ADJACENT SURFACES
- 7. EXISTING CONCRETE COLUMNS - CLEAN AND PAINT AS NEEDED AFTER DEMOLITION
- 8. EXISTING 8" BRICK CURB TO REMAIN
- 9. EXISTING BORROWED LIGHT - SHOWN FOR REFERENCE
- 10. EXISTING PLYWOOD COVER - CLEAN AND PAINT AS NEEDED AFTER DEMOLITION
- 11. NEW WOOD STUD CRIPPLE WALL
- 12. NEW BURKE COLORSCAPE 13" RUBBER TREAD WITH RAISED SURFACE OVER 3/4" PLYWOOD AT STANDING WORK SURFACE BASE - COLOR BY OWNER
- 13. NEW 3/4" SOLID SURFACE WORK SURFACE OVER 3/4" PLYWOOD - COLOR BY OWNER
- 14. PROVIDE SEALANT AT MASONRY WALL - TYPICAL
- 15. EXISTING WOOD WINDOW LEDGER, CONTRACTOR TO INSPECT AND PREP FOR INSTALLATION OF NEW METAL COVER
- 16. NEW BREAK METAL COVER PIECE OVER EXISTING WOOD WINDOW LEDGER, FIELD VERIFY SIZE, PROVIDE HEM AT BOTH ENDS, ATTACH WITH COLORED SCREW/WASHER CONNECTORS
- 17. PREP EXISTING MASONRY CURB AND 4" OF MASONRY WING WALL TO RECEIVE PAINT TO MATCH EXISTING PAINTED MASONRY AT NORTH HALL SIDE ONLY
- 18. NEW WOOD CRIPPLE WALL WITH ABUSE RESISTANT DRYWALL, PROVIDE J-METAL TERMINATION PIECE AND SEALANT AT BOTTOM AND SIDES WHERE DRYWALL ABUTS MASONRY, FINISH AND PAINT TO MATCH ADJACENT SURFACE - FRAME WALL ON TOP OF EXISTING BRICK CURB AND ALIGN GYP. BD. TO FACE OF BRICK CURB
- 19. NEW 2-1/2" SOLID SURFACE APRON TO MATCH BENCH
- 20. NEW SURFACE MOUNTED FIRE EXTINGUISHER CABINET TO REPLACE EXISTING REMOVED DURING CONSTRUCTION -
- 21. COORDINATE EXACT LOCATION INFIELD WITH FIRE AUTHORITY
- 22. 1/2" GYP. BD. CONTROL JOINT - SEE ELEVATION AND DETAIL
- 23. 1/4" SOLID SURFACE CONTROL JOINT - SEE DETAIL
- 24. SILICONE SEALANT AT CONTROL JOINT, COLOR TO MATCH SOLID SURFACE MATERIAL

DEMOLITION NOTES:

- 1. REMOVE EXISTING WOOD INFILL IN ITS ENTIRETY - PROTECT EXISTING MASONRY WALLS DURING DEMOLITION
- 2. REMOVE EXISTING SURFACE MOUNTED DISPLAY CABINET - SALVAGE AND RETURN TO OWNER
- 3. REMOVE EXISTING FIRE EXTINGUISHER CABINET - SALVAGE AND RETURN TO OWNER
- 4. REMOVE EXISTING RECESSED DISPLAY CABINET - SALVAGE AND RETURN TO OWNER
- 5. CAREFULLY REMOVE EXISTING 'ROSIE THE RIVETER' MURAL AND RETURN TO OWNER FOR REINSTALLATION



1 DEMOLITION PLAN AND NOTES
1/8" = 1'-0"



2 AREA OF WORK PLAN
1/4" = 1'-0"



KCG | LLC
KALERT | Consulting Group, LLC
2429 Stonecrest Drive
Fert Collins, Colorado 80521
tomkalert@gmail.com

STATE OF COLORADO
THOMAS R. KALERT
#208124
02.04.22
LICENSED ARCHITECT

SHEET CONTENTS
DEMOLITION AND NEW FLOOR PLANS

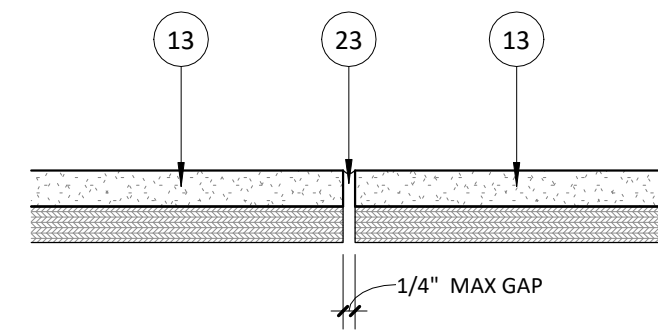
POUDRE HIGH SCHOOL
LONG DRAW CREEK
HALLWAY IMPROVEMENTS

THE SEALS AND SIGNS INCORPORATED HEREIN, AS AN INSTRUMENT OF PROFESSIONAL SERVICE, ARE THE PROPERTY OF KCG | LLC AND NOT TO BE LOANED, REPRODUCED, COPIED, OR OTHERWISE USED WITHOUT WRITTEN PERMISSION FROM KCG | LLC.

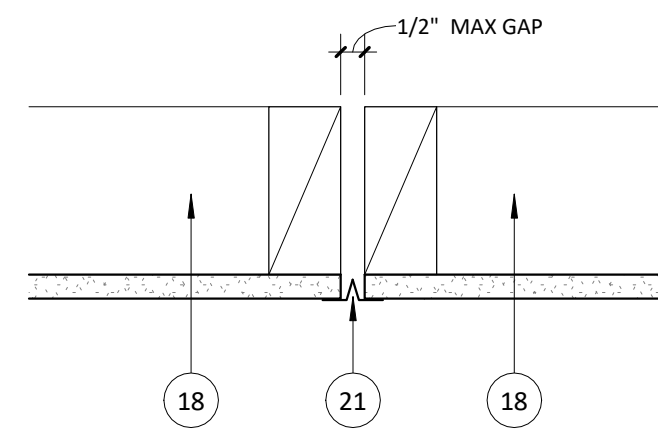
NO.	BY	DESCRIPTION	DATE

DESIGNED BY DAM	SHEET NO. A1.1
CHECKED BY KCG	DATE 02.04.22

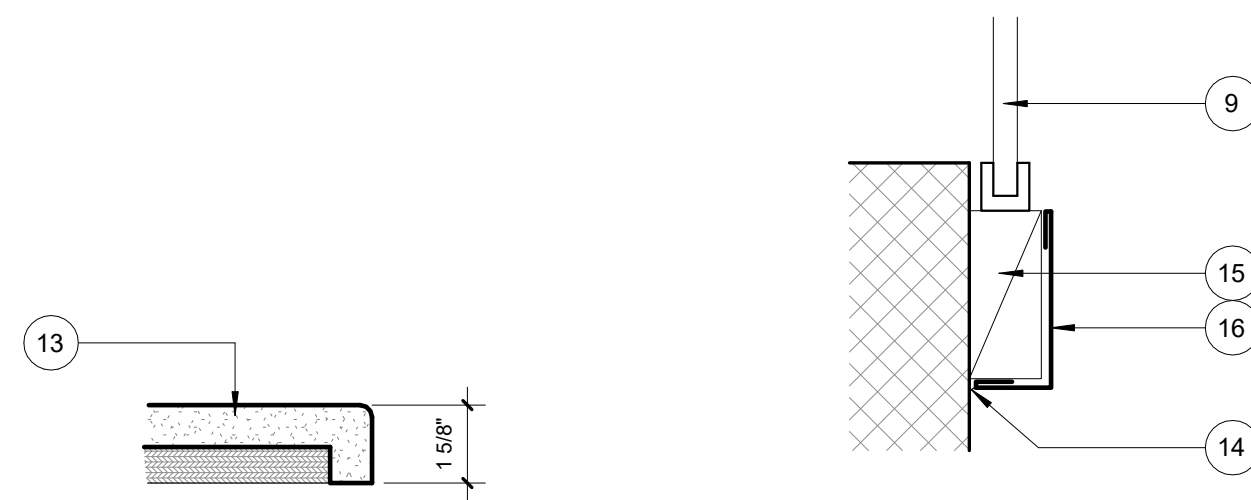
ISSUE FOR PERMIT



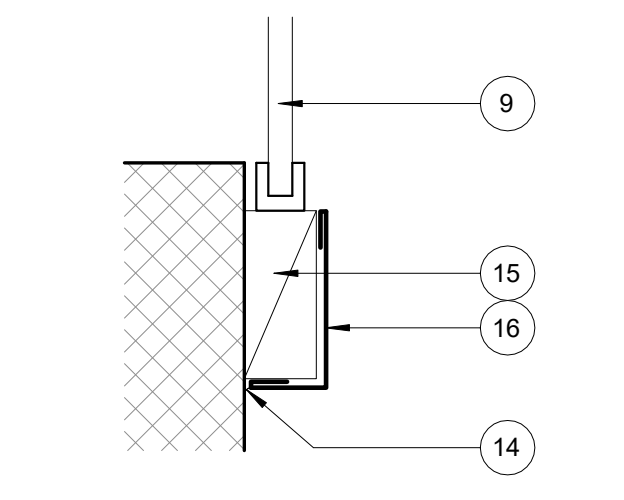
10 SOLID SURFACE CONTROL JOINT
3" = 1'-0"



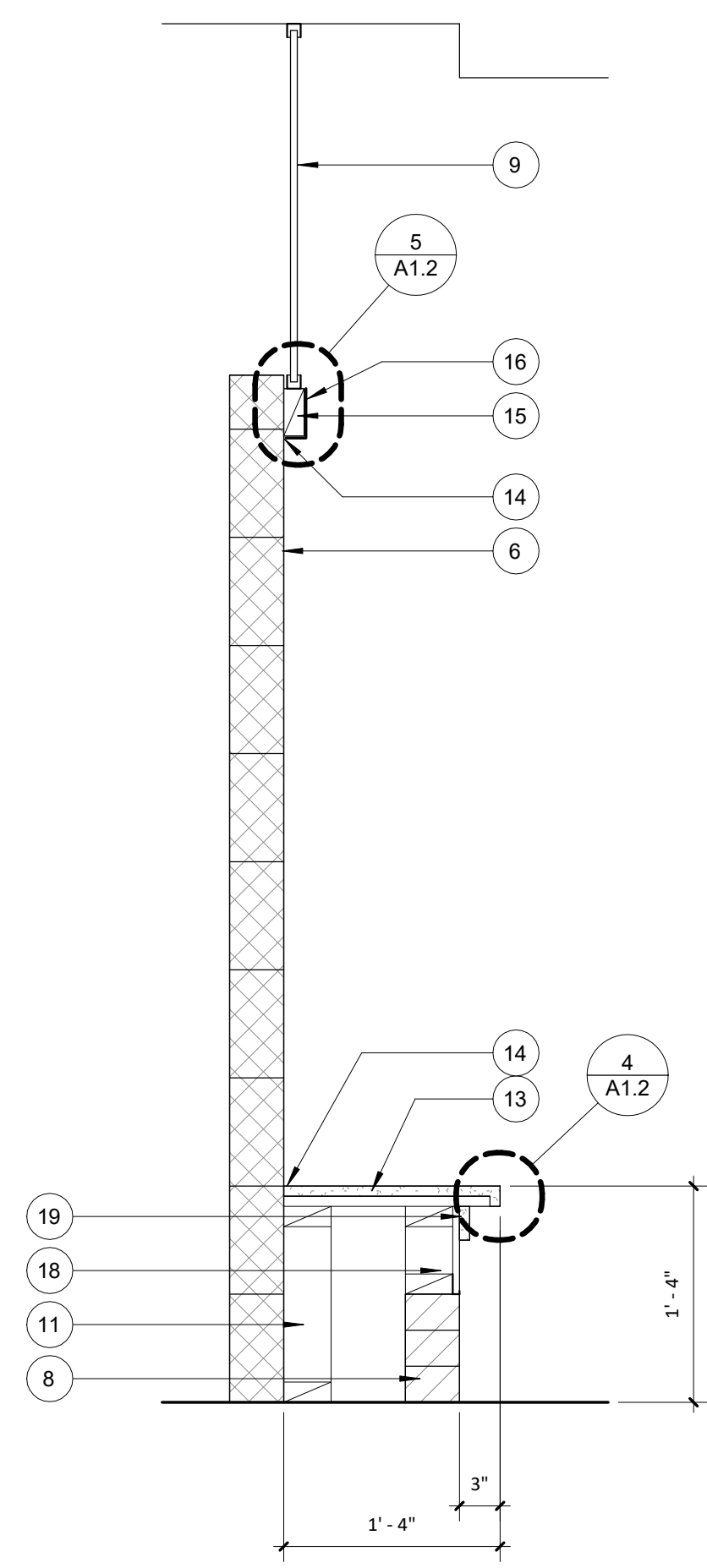
9 GYP. BD. CONTROL JOINT
3" = 1'-0"



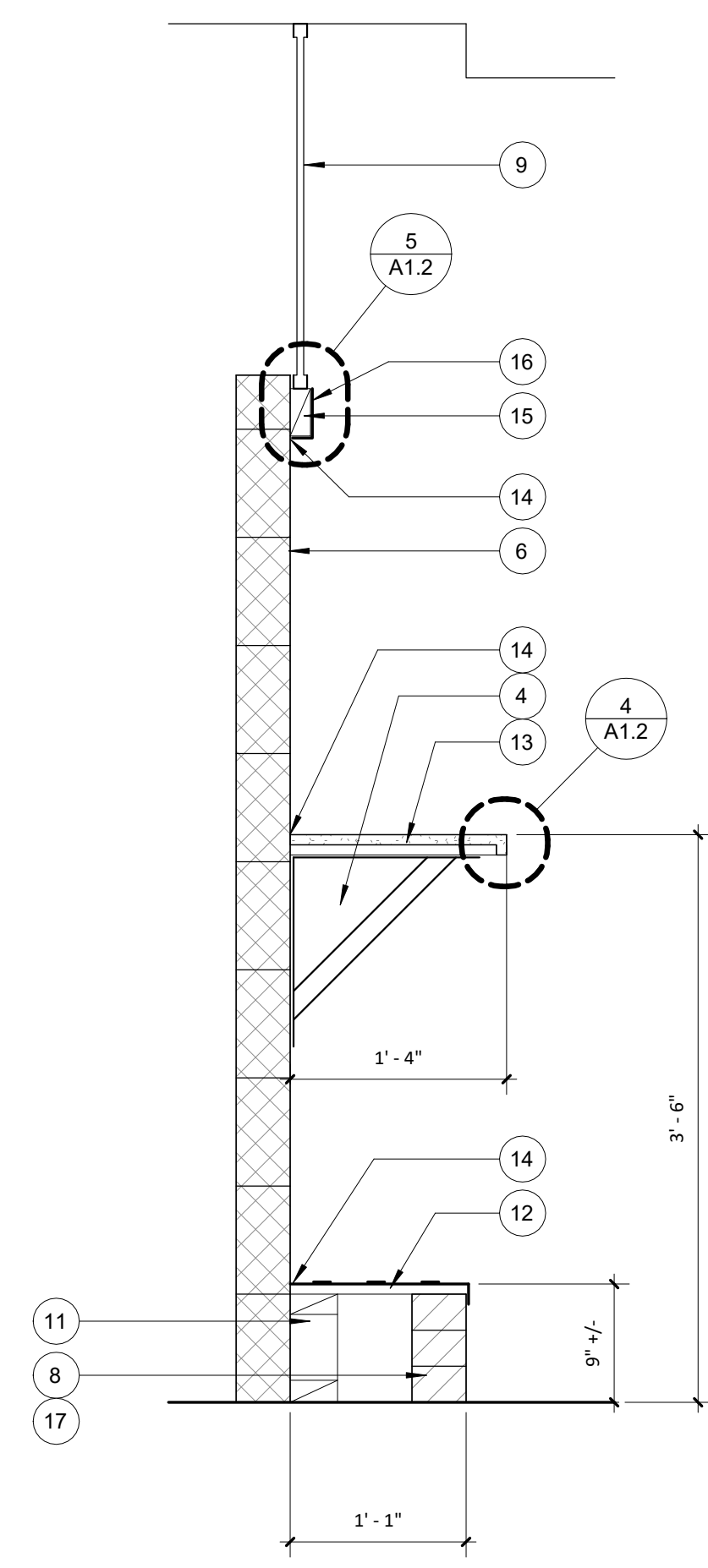
4 NOSING DETAIL
3" = 1'-0"



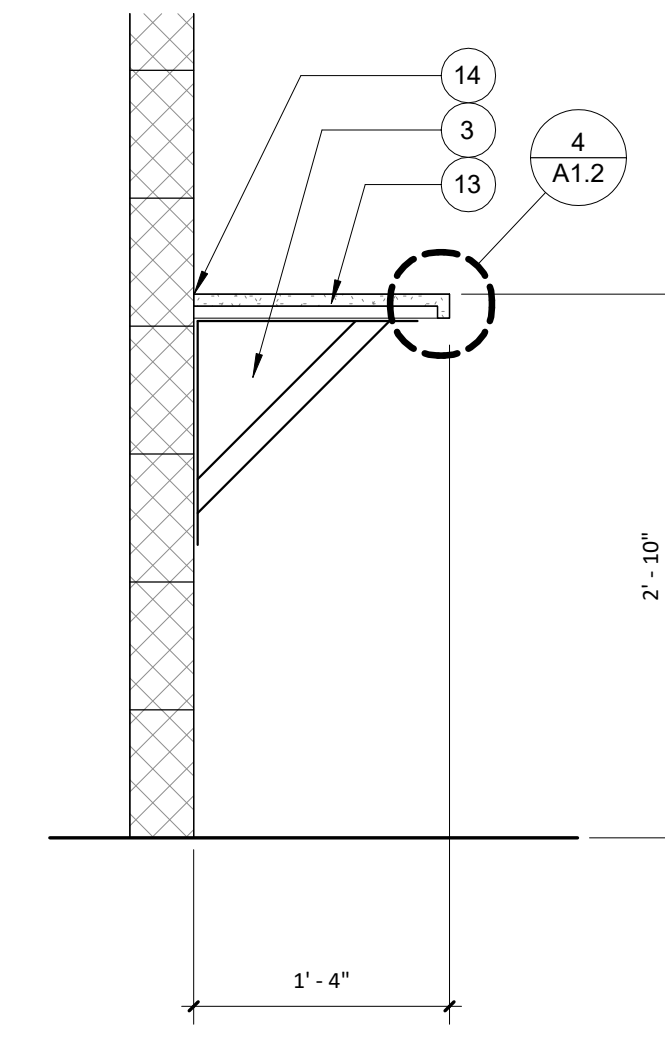
5 BREAK METAL DETAIL
3" = 1'-0" PROVIDE HEMMED EDGE



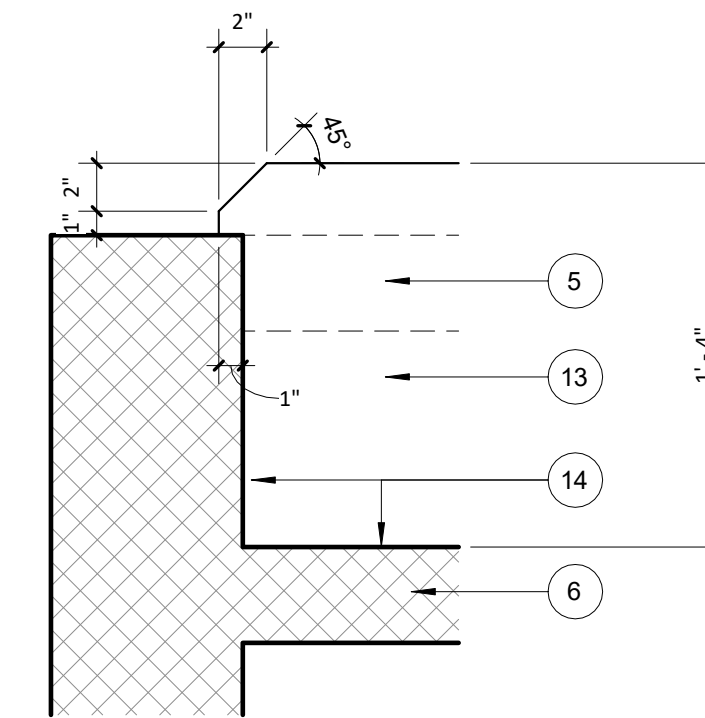
6 BENCH DETAIL
1" = 1'-0"



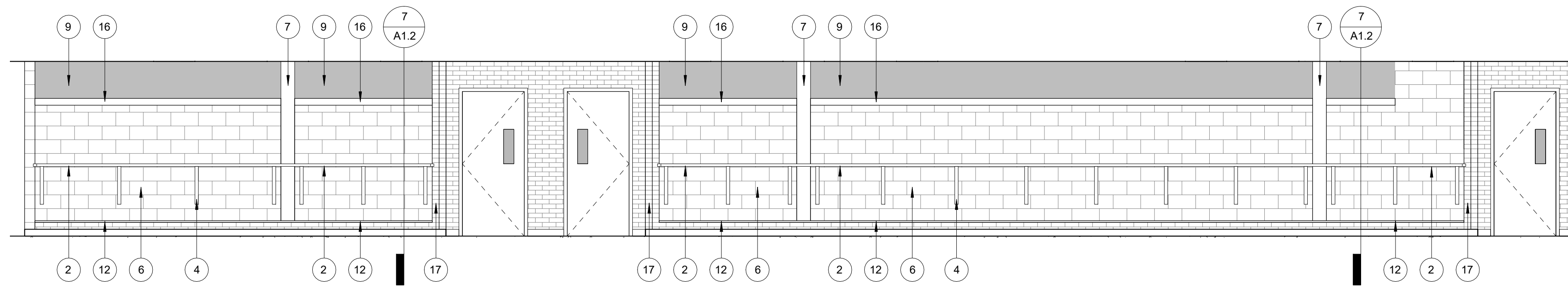
7 STANDING DETAIL
1" = 1'-0"



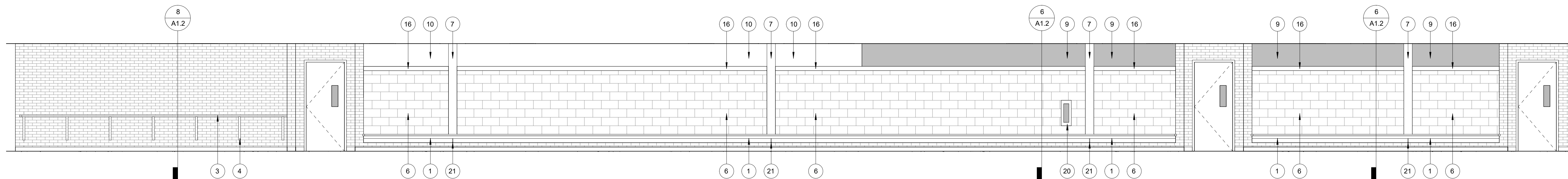
8 ADA WORK SURFACE DETAIL
1" = 1'-0"



3 TYPICAL RETURN DETAIL
1 1/2" = 1'-0"



2 LONG DRAW CREEK HALLWAY - NORTH ELEVATION
1/4" = 1'-0"



1 LONG DRAW CREEK HALLWAY - SOUTH ELEVATION
1/4" = 1'-0"

GENERAL NOTES:

- A. SCOPE OF WORK TO INCLUDE INTERIOR LONG DRAW HALLWAY IMPROVEMENTS ONLY
- B. CONTRACTOR TO FIELD VERIFY ALL EXISTING SITE CONDITIONS AND SHALL INFORM ARCHITECT AND OWNER OF ANY MAJOR DISCREPANCIES
- C. PATCH, REPAIR AND PAINT ALL EXISTING INTERIOR SURFACES - UNLESS NOTED OTHERWISE

KEY NOTES:

- 1. NEW SOLID SURFACE BENCH SEATING AT SOUTH SIDE OF HALLWAY - SEE DETAIL
- 2. NEW SOLID SURFACE STANDING WORK SURFACE AT NORTH SIDE OF HALLWAY - SEE DETAIL
- 3. NEW SEATED/ADA COMPLIANT WORK SURFACE AT 2' - 10"
- 4. PROVIDE HEAVY DUTY WALL MOUNTED UNDER COUNTER BRACKET SUPPORTS EQUALLY SPACED AS SHOWN
- 5. LINE OF WALL BELOW - SEE DETAIL
- 6. EXISTING MASONRY WALL - CLEAN, PATCH AND REPAIR AS NEEDED FROM DEMOLITION - PROVIDE (2) COATS OF MASONRY FILLER AND PAINT TO MATCH EXISTING ADJACENT SURFACES
- 7. AFTER DEMOLITION EXISTING CONCRETE COLUMNS - CLEAN AND PAINT AS NEEDED
- 8. EXISTING 8" BRICK CURB TO REMAIN
- 9. EXISTING BORROWED LIGHT - SHOWN FOR REFERENCE
- 10. EXISTING PLYWOOD COVER - CLEAN AND PAINT AS NEEDED AFTER DEMOLITION
- 11. NEW WOOD STUD CRIPPLE WALL
- 12. NEW BURKE COLORSCAPE 13" RUBBER TREAD WITH RAISED SURFACE OVER 3/4" PLYWOOD AT STANDING WORK SURFACE BASE - COLOR BY OWNER
- 13. NEW 3/4" SOLID SURFACE WORK SURFACE OVER 3/4" PLYWOOD - COLOR BY OWNER
- 14. PROVIDE SEALANT AT MASONRY WALL - TYPICAL
- 15. EXISTING WOOD WINDOW LEDGER, CONTRACTOR TO INSPECT AND PREP FOR INSTALLATION OF NEW METAL COVER
- 16. NEW BREAK METAL COVER PIECE OVER EXISTING WOOD WINDOW LEDGER, FIELD VERIFY SIZE, PROVIDE HEM AT BOTH ENDS, ATTACH WITH COLORED SCREW/WASHER CONNECTORS
- 17. PREP EXISTING MASONRY CURB AND 4" OF MASONRY WING WALL TO RECEIVE PAINT TO MATCH EXISTING PAINTED MASONRY AT NORTH HALL SIDE ONLY
- 18. NEW WOOD CRIPPLE WALL WITH ABUSE RESISTANT DRYWALL, PROVIDE J-METAL TERMINATION PIECE AND SEALANT AT BOTTOM AND SIDES WHERE DRYWALL ABUTS MASONRY. FINISH AND PAINT TO MATCH ADJACENT SURFACE - FRAME WALL ON TOP OF EXISTING BRICK CURB AND ALIGN GYP. BD. TO FACE OF BRICK CURB
- 19. NEW 2-1/2" SOLID SURFACE APRON TO MATCH BENCH
- 20. NEW SURFACE MOUNTED FIRE EXTINGUISHER CABINET TO REPLACE EXISTING REMOVED DURING CONSTRUCTION - COORDINATE EXACT LOCATION INFIELD WITH FIRE AUTHORITY
- 21. 1/2" GYP. BD. CONTROL JOINT - SEE ELEVATION AND DETAIL
- 22. 1/4" SOLID SURFACE CONTROL JOINT - SEE DETAIL
- 23. SILICONE SEALANT AT CONTROL JOINT, COLOR TO MATCH SOLID SURFACE MATERIAL

Poudre School District
Poudre High School-Corridor Seating

January 12, 2022

SECTION 017329 - CUTTING AND PATCHING

PART 1 - GENERAL

- 1.1 SUMMARY
 - A. This Section includes procedural requirements for cutting and patching.
- 1.2 SUBMITTALS
 - A. Cutting and Patching Proposal: Submit a proposal describing procedures at least 10 days before the time cutting and patching will be performed. Include the following information:
 1. Dates: Indicate when cutting and patching will be performed.
 2. Utility Services and Mechanical/Electrical Systems: List services/systems that cutting and patching procedures will disturb or affect. List services/systems that will be relocated and those that will be temporarily out of service. Indicate how long services/systems will be disrupted.
 3. Structural Elements: Where cutting and patching involve adding reinforcement to structural elements, submit details and engineering calculations showing integration of reinforcement with original structure.
 - B. Structural Elements: Do not cut and patch structural elements in a manner that could change their load-carrying capacity or load-deflection ratio.
 - C. Operational Elements: Do not cut and patch operating elements and related components in a manner that results in reducing their capacity to perform as intended or that results in increased maintenance or decreased operational life or safety.
 - D. Miscellaneous Elements: Do not cut and patch miscellaneous elements or related components in a manner that could change their load-carrying capacity, that results in reducing their capacity to perform as intended, or that results in increased maintenance or decreased operational life or safety.
 - E. Visual Requirements: Do not cut and patch construction in a manner that results in visual evidence of cutting and patching. Do not cut and patch construction exposed on the exterior or in occupied spaces in a manner that would, in Architect's opinion, reduce the building's aesthetic qualities. Remove and replace construction that has been cut and patched in a visually unsatisfactory manner.

PART 2 - PRODUCTS

- 2.1 MATERIALS
 - A. General: Comply with requirements specified in other Sections.

CUTTING AND PATCHING
KALERT | Consulting Group, LLC 017329 - 1

Poudre School District
Poudre High School-Corridor Seating

January 12, 2022

- 1.5 COORDINATION
 - A. Coordinate removals and new construction of architectural, structural, mechanical, plumbing and electrical systems prior to initiating construction. Establish a schedule for removals, noting duration between service interruptions and new systems being operational.
- 1.6 FIELD CONDITIONS
 - A. Owner will occupy portions of building immediately adjacent to selective demolition area. Conduct selective demolition so Owner's operations will not be disrupted.
 - B. Notify Architect of discrepancies between existing conditions and Drawings before proceeding with selective demolition.
 - C. Storage or sale of removed items or materials on-site is not permitted.
 - D. Building Services: Maintain all existing building systems and services, except those specifically identified for removal. Where required, protect building systems and services against damage during selective demolition operations.
- 1.7 WARRANTY
 - A. Existing Warranties: Remove, replace, patch, and repair materials and surfaces cut or damaged during selective demolition, by methods and with materials so as not to void existing warranties. Notify warrantor before proceeding.
 - B. Notify warrantor on completion of selective demolition, and obtain documentation verifying that existing system has been inspected and warranty remains in effect. Submit documentation at Project closeout.

PART 2 - PRODUCTS

- 2.1 PERFORMANCE REQUIREMENTS
 - A. Regulatory Requirements: Comply with governing EPA notification regulations before beginning selective demolition. Comply with hauling and disposal regulations of authorities having jurisdiction.
 - B. Standards: Comply with ANSI/ASSE A10.6 and NFPA 241.

PART 3 - EXECUTION

- 3.1 EXAMINATION
 - A. Verify that utilities have been disconnected and capped before starting selective demolition operations.

SELECTIVE DEMOLITION AND REMOVALS
KALERT | Consulting Group, LLC 024119 - 2

Poudre School District
Poudre High School-Corridor Seating

January 12, 2022

- B. In-Place Materials: Use materials identical to in-place materials. For exposed surfaces, use materials that visually match in-place adjacent surfaces to the fullest extent possible.
 1. If identical materials are unavailable or cannot be used, use materials that, when installed, will match the visual and functional performance of in-place materials.

PART 3 - EXECUTION

- 3.1 EXAMINATION
 - A. Examine surfaces to be cut and patched and conditions under which cutting and patching are to be performed.
 1. Compatibility: Before patching, verify compatibility with and suitability of substrates, including compatibility with in-place finishes or primers.
 2. Proceed with installation only after unsafe or unsatisfactory conditions have been corrected.
- 3.2 PREPARATION
 - A. Temporary Support: Provide temporary support of Work to be cut.
 - B. Protection: Protect in-place construction during cutting and patching to prevent damage. Provide protection from adverse weather conditions for portions of Project that might be exposed during cutting and patching operations.
 - C. Adjoining Areas: Avoid interference with use of adjoining areas or interruption of free passage to adjoining areas.
 - D. Existing Utility Services and Mechanical/Electrical Systems: Where existing services/systems are required to be removed, relocated, or abandoned, bypass such services/systems before cutting to prevent interruption to occupied areas.
- 3.3 PERFORMANCE
 - A. General: Employ skilled workers to perform cutting and patching. Proceed with cutting and patching at the earliest feasible time, and complete without delay.
 1. Cut in-place construction to provide for installation of other components or performance of other construction, and subsequently patch as required to restore surfaces to their original condition.
 - B. Cutting: Cut in-place construction by sawing, drilling, breaking, chipping, grinding, and similar operations, including excavation, using methods least likely to damage elements retained or adjoining construction. If possible, review proposed procedures with original Installer; comply with original Installer's written recommendations.

CUTTING AND PATCHING
KALERT | Consulting Group, LLC 017329 - 2

Poudre School District
Poudre High School-Corridor Seating

January 12, 2022

- B. Review record documents of existing construction provided by Owner. Owner does not guarantee that existing conditions are same as those indicated in record documents.
- C. Survey existing conditions and correlate with requirements indicated to determine extent of selective demolition required.
- D. When unanticipated mechanical, electrical, or structural elements that conflict with intended function or design are encountered, investigate and measure the nature and extent of conflict. Promptly submit a written report to Architect.
- E. Survey of Existing Conditions: Record existing conditions by use of preconstruction photographs and preconstruction video recordings.
 1. Inventory and record the condition of items to be removed and salvaged. Provide photographs or video of conditions that might be misconstrued as damage caused by salvage operations.
 2. Before selective demolition or removal of existing building elements that will be reproduced or duplicated in final Work, make permanent record of measurements, materials, and construction details required to make exact reproduction.
- 3.2 UTILITY SERVICES AND MECHANICAL/ELECTRICAL SYSTEMS
 - A. Existing Services/Systems to Remain: Maintain services/systems indicated to remain and protect them against damage.
 - B. Existing Services/Systems to Be Removed, Relocated, or Abandoned: Locate, identify, disconnect, and seal or cap off indicated utility services and mechanical/electrical systems serving areas to be selectively demolished.
 1. Owner will arrange to shut off indicated services/systems when requested by Contractor.
 2. Arrange to shut off indicated utilities with utility companies.
 3. If services/systems are required to be removed, relocated, or abandoned, provide temporary services/systems that bypass area of selective demolition and that maintain continuity of services/systems to other parts of building.
 4. Disconnect, demolish, and remove plumbing, and HVAC systems, equipment, and components indicated to be removed.
 - a. Equipment to Be Removed: Disconnect and cap services and remove equipment.
 - b. Equipment to Be Removed and Reinstalled: Disconnect and cap services and remove, clean, and store equipment; when appropriate, reinstall, reconnect, and make equipment operational.
 - c. Equipment to Be Removed and Salvaged: Disconnect and cap services and remove equipment and deliver to Owner.
 - d. Ducts to Be Removed: Remove portion of ducts indicated to be removed and plug remaining ducts with same or compatible ductwork material.
- 3.3 PREPARATION
 - A. Site Access and Temporary Controls: Conduct selective demolition and debris-removal operations to ensure minimum interference with roads, streets, walks, walkways, and other adjacent occupied and used facilities.

SELECTIVE DEMOLITION AND REMOVALS
KALERT | Consulting Group, LLC 024119 - 3

Poudre School District
Poudre High School-Corridor Seating

January 12, 2022

- 1. In general, use hand or small power tools designed for sawing and grinding, not hammering and chopping. Cut holes and slots as small as possible, neatly to size required, and with minimum disturbance of adjacent surfaces. Temporarily cover openings when not in use.
 2. Finished Surfaces: Cut or drill from the exposed or finished side into concealed surfaces.
 3. Mechanical and Electrical Services: Cut off pipe or conduit in walls or partitions to be removed. Cap, valve, or plug and seal remaining portion of pipe or conduit to prevent entrance of moisture or other foreign matter after cutting.
 4. Proceed with patching after construction operations requiring cutting are complete.
- C. Patching: Patch construction by filling, repairing, refinishing, closing up, and similar operations following performance of other Work. Patch with durable seams that are as invisible as possible. Provide materials and comply with installation requirements specified in other Sections.
 1. Inspection: Where feasible, test and inspect patched areas after completion to demonstrate integrity of installation.
 2. Exposed Finishes: Restore exposed finishes of patched areas and extend finish restoration into retained adjoining construction in a manner that will eliminate evidence of patching and refinishing.
 3. Floors and Walls: Where walls or partitions that are removed extend one finished area into another, patch and repair floor and wall surfaces in the new space. Provide an even surface of uniform finish, color, texture, and appearance. Remove in-place floor and wall coverings and replace with new materials, if necessary, to achieve uniform color and appearance.
 4. Ceilings: Patch, repair, or rehang in-place ceilings as necessary to provide an even-plane surface of uniform appearance.
- D. Cleaning: Clean areas and spaces where cutting and patching are performed. Completely remove paint, mortar, oils, putty, and similar materials.

END OF SECTION 017329

CUTTING AND PATCHING
KALERT | Consulting Group, LLC 017329 - 3

Poudre School District
Poudre High School-Corridor Seating

January 12, 2022

- 1. Comply with requirements for access and protection specified in Section 015000 "Temporary Facilities and Controls."
- B. Temporary Facilities: Provide temporary barricades and other protection required to prevent injury to people and damage to adjacent buildings and facilities to remain.
 1. Provide protection to ensure safe passage of people around selective demolition area and to and from occupied portions of building.
 2. Provide temporary weather protection, during interval between selective demolition of existing construction on exterior surfaces and new construction, to prevent water leakage and damage to structure and interior areas.
 3. Protect walls, ceilings, floors, and other existing finish work that are to remain or that are exposed during selective demolition operations.
 4. Cover and protect furniture, furnishings, and equipment that have not been removed.
- C. Temporary Shoring: Provide and maintain shoring, bracing, and structural supports as required to preserve stability and prevent movement, settlement, or collapse of construction and finishes to remain, and to prevent unexpected or uncontrolled movement or collapse of construction being demolished.
 1. At the General Contractor's discretion, General Contractor to furnish professional engineering design services required for shoring and bracing design and implementation required during Selective Demolition activity.
 2. Strengthen or add new supports when required during progress of selective demolition.
- 3.4 SELECTIVE DEMOLITION, GENERAL
 - A. General: Demolish and remove existing construction only to the extent required by new construction and as indicated. Use methods required to complete the Work within limitations of governing regulations and as follows:
 1. Proceed with selective demolition systematically, from higher to lower level. Complete selective demolition operations above each floor or tier before disturbing supporting members on the next lower level.
 2. Neatly cut openings and holes plumb, square, and true to dimensions required. Use cutting methods least likely to damage construction to remain or adjoining construction. Use hand tools or small power tools designed for sawing or grinding, not hammering and chopping, to minimize disturbance of adjacent surfaces. Temporarily cover openings to remain.
 3. Cut or drill from the exposed or finished side into concealed surfaces to avoid marring existing finished surfaces.
 4. Do not use cutting torches until work area is cleared of flammable materials. At concealed spaces, such as duct and pipe interiors, verify condition and contents of hidden space before starting flame-cutting operations. Maintain fire watch and portable fire-suppression devices during flame-cutting operations.
 5. Maintain adequate ventilation when using cutting torches.
 6. Remove decayed, vermin-infested, or otherwise dangerous or unsuitable materials and promptly dispose of off-site.
 7. Locate selective demolition equipment and remove debris and materials so as not to impose excessive loads on supporting walls, floors, or framing.
 - B. Removed and Salvaged Items:
 1. Clean salvaged items.

SELECTIVE DEMOLITION AND REMOVALS
KALERT | Consulting Group, LLC 024119 - 4

Poudre School District
Poudre High School-Corridor Seating

January 12, 2022

SECTION 024119 - SELECTIVE DEMOLITION AND REMOVALS

PART 1 - GENERAL

- 1.1 SUMMARY
 - A. Section Includes:
 1. Removal of selected site and building elements.
 2. Salvage of existing items to be reused or recycled, as indicated on the drawings, and including but not limited to:
 - a. Remove and reinstall Mural "Rosie the Riveter". As indicated in the drawings. Coordinate reinstallation location with the Owner.
- 1.2 DEFINITIONS
 - A. Remove: Detach items from existing construction and legally dispose of them off-site unless indicated to be removed and salvaged or removed and reinstalled.
 - B. Remove and Salvage: Carefully detach from existing construction, in a manner to prevent damage, and deliver to Owner.
 - C. Remove and Reinstall: Detach items from existing construction, prepare for reuse, and reinstall where indicated.
 - D. Existing to Remain: Existing items of construction that are not to be permanently removed and that are not otherwise indicated to be removed, removed and salvaged, or removed and reinstalled.
 - E. Demolish: Remove.
- 1.3 MATERIALS OWNERSHIP
 - A. Unless otherwise indicated, demolition waste becomes property of Contractor.
- 1.4 INFORMATIONAL SUBMITTALS
 - A. Proposed Protection Measures: Submit report, including drawings, that indicates the measures proposed for protecting individuals and property, for environmental protection, for dust control and, for noise control. Indicate proposed locations and construction of barriers.
 - B. Inventory: Submit a list of items to be removed and salvaged and deliver to Owner prior to start of demolition.
 - C. Predemolition Photographs or Video: Submit before Work begins.

SELECTIVE DEMOLITION AND REMOVALS
KALERT | Consulting Group, LLC 024119 - 1

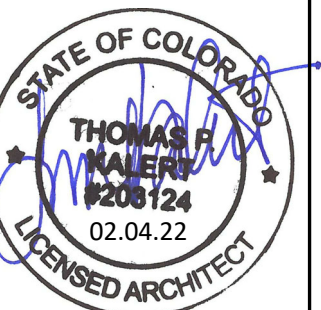
Poudre School District
Poudre High School-Corridor Seating

January 12, 2022

- 2. Pack or crate items after cleaning. Identify contents of containers.
 3. Store items in a secure area until delivery to Owner.
 4. Transport items to Owner's storage area off-site designated by Owner.
 5. Protect items from damage during transport and storage.
- C. Removed and Reinstalled Items:
 1. Clean and repair items to functional condition adequate for intended reuse.
 2. Pack or crate items after cleaning and repairing. Identify contents of containers.
 3. Protect items from damage during transport and storage.
 4. Reinstall items in locations indicated. Comply with installation requirements for new materials and equipment. Provide connections, supports, and miscellaneous materials necessary to make item functional for use indicated.
- D. Existing Items to Remain: Protect construction indicated to remain against damage and soiling during selective demolition. When permitted by Architect, items may be removed to a suitable, protected storage location during selective demolition, cleaned and reinstalled in their original locations after selective demolition operations are complete.
- 3.5 DISPOSAL OF DEMOLISHED MATERIALS
 - A. General: Except for items or materials indicated to be recycled, reused, salvaged, reinstalled, or otherwise indicated to remain Owner's property, remove demolished materials from Project site and legally dispose of them in an EPA-approved landfill.
 1. Do not allow demolished materials to accumulate on-site.
 2. Remove and transport debris in a manner that will prevent spillage on adjacent surfaces and areas.
 3. Remove debris from elevated portions of building by chute, hoist, or other device that will convey debris to grade level in a controlled descent.
 4. Comply with requirements specified in Section 017419 "Construction Waste Management and Disposal."
 - B. Burning: Do not burn demolished materials.
 - C. Disposal: Transport demolished materials off Owner's property and legally dispose of them.
- 3.6 CLEANING
 - A. Clean adjacent structures and improvements of dust, dirt, and debris caused by selective demolition operations. Return adjacent areas to condition existing before selective demolition operations began.

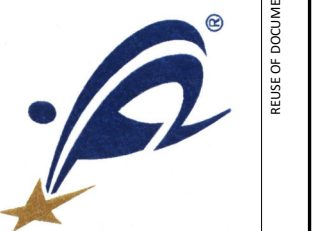
SELECTIVE DEMOLITION AND REMOVALS
KALERT | Consulting Group, LLC 024119 - 5

KCG | LLC
KALERT | Consulting Group, LLC
2429 Stonecrest Drive
Fort Collins, Colorado 80521
tom.kalera@gmail.com



SHEET CONTENTS
PROJECT SPECIFICATIONS

POUDRE HIGH SCHOOL
LONG DRAW CREEK
HALLWAY IMPROVEMENTS



NO.	BY	DESCRIPTION	DATE

ISSUE FOR PERMIT

DATE: 02.04.22

REVISIONS

A2.1

Poudre School District
Poudre High School-Corridor Seating

January 12, 2022

SECTION 064113
ARCHITECTURAL WOODWORK

PART 1 - GENERAL

- 1.1 RELATED DOCUMENTS
A. Drawings and general provisions of the Contract, including General and Supplementary Conditions and Division 01 Specification Sections, apply to this Section.
1.2 SUMMARY
A. Section Includes:
1. Countertops including Solid Surfaces.
2. Benches including Solid Surfaces
3. Wood furring, blocking, shims, and hanging strips for installing architectural countertops and benches unless concealed within other construction before cabinet installation.
B. Related Requirements:
1. Section 06 10 00 "Rough Carpentry" for wood furring, blocking, shims, and hanging strips required for installing countertops and benches and concealed within other construction before cabinet installation.
2.
1.3 ACTION SUBMITTALS
A. Product Data: For each type of product, including panel products, high-pressure decorative laminate, adhesive for bonding plastic laminate, fire-retardant-treated materials and cabinet hardware and accessories.
1. Include data for fire-retardant treatment from chemical-treatment manufacturer and certification by treating plant that treated materials comply with requirements.
B. Shop Drawings: Show location of each item, dimensioned plans and elevations, large-scale details, attachment devices, and other components.
1. Show details full size.
2. Show locations and sizes of furring, blocking, and hanging strips, including concealed blocking and reinforcement specified in other Sections.
3. Show locations and sizes of cutouts and holes for electrical switches and outlets and other items installed in architectural plastic-laminate countertops and benches.
C. Samples for Initial Selection:
1. Solid Surface material
1.4 QUALITY ASSURANCE
A. Fabricator Qualifications: Shop that employs skilled workers who custom fabricate products similar to those required for this Project and whose products have a record of successful in-service performance.
B. Structural Integrity: Countertop manufacturer shall be responsible for the structural integrity of components and finished countertop units, designing, constructing and installing countertops and benches and seating benches to their own standards, but in no case less than the following:
1. Countertops shall be designed to safely support loads of 200 lbs. concentrated on one square foot in any area with no apparent deflection.

ARCHITECTURAL WOODWORK
KALERT | Consulting Group, LLC 06 41 13 - 1

Poudre School District
Poudre High School-Corridor Seating

January 12, 2022

SECTION 079200 - JOINT SEALANTS

PART 1 - GENERAL

- 1.1 RELATED DOCUMENTS
A. Drawings and general provisions of the Contract, including General and Supplementary Conditions and Division 01 Specification Sections, apply to this Section.
1.2 SUMMARY
A. Section Includes:
1. Silicone joint sealants.
2. Latex joint sealants.
1.3 QUALITY ASSURANCE
A. Installer Qualifications: Manufacturer's authorized representative who is trained and approved for installation of units required for this Project.
1.4 WARRANTY
A. Special Installer's Warranty: Manufacturer's standard form in which Installer agrees to repair or replace joint sealants that do not comply with performance and other requirements specified in this Section within specified warranty period.
1. Warranty Period: Two years from date of Substantial Completion.

PART 2 - PRODUCTS

- 2.1 MATERIALS, GENERAL
A. Latex Joint Sealant: Acrylic latex or siliconized acrylic latex, ASTM C 834, Type OP, Grade NF.
1. Products: Subject to compliance with requirements, provide one of the following:
a. BASF Building Systems: Sonolac.
b. Bostik, Inc.: Chem-Calk 600.
c. Pecora Corporation: AC-20+.
d. Tremco Incorporated: Tremflex 834.
2. Joint Locations:
a. Perimeter joints between interior wall surfaces and frames of interior doors and windows.

JOINT SEALANTS
KALERT | Consulting Group, LLC 079200 - 1

Poudre School District
Poudre High School-Corridor Seating

January 12, 2022

- 2. Provide appropriate anchorage into substrate to carry design loads. Coordinate locations of blocking required with General Contractor.
C. Do not install damaged countertops and benches. Repair or replace to Architect's and Owner's satisfaction prior to installation.
D. Do not deliver countertops and benches until painting and similar operations that could damage woodwork have been completed in installation areas. If countertops and benches must be stored in other than installation areas, store only in areas where environmental conditions comply with requirements specified in "Field Conditions" Article.
1.5 FIELD CONDITIONS
A. Field Measurements: Where countertops and benches are indicated to fit to other construction, verify dimensions of other construction by field measurements before fabrication, and indicate measurements on Shop Drawings. Coordinate fabrication schedule with construction progress to avoid delaying the Work.
1. Locate concealed framing, blocking, and reinforcements that support countertops and benches by field measurements before being enclosed, and indicate measurements on Shop Drawings.
B. Established Dimensions: Where countertops and benches are indicated to fit to other construction, establish dimensions for areas where countertops and benches are to fit. Provide allowance for trimming at site, and coordinate construction to ensure that actual dimensions correspond to established dimensions.
1.6 COORDINATION
A. Coordinate sizes and locations of framing, blocking, furring, reinforcements, and other related units of Work specified in other Sections to ensure that countertops and benches can be supported and installed as indicated.

PART 2 - PRODUCTS

- 2.1 ARCHITECTURAL COUNTERTOPS AND BENCHES
A. Regional Materials: Countertops and benches shall be manufactured within 500 miles (800 km) of Project site.
2.2 COUNTERS AND BENCHES
A. Solid Surface per the drawings.
1. Conventionally fabricated per the drawings.
2.3 MISCELLANEOUS MATERIALS
A. Furring, Blocking, Shims, and Hanging Strips: Softwood or hardwood lumber, kiln dried to less than 15 percent moisture content.
B. Anchors: Select material, type, size, and finish required for each substrate for secure anchorage. Provide metal expansion sleeves or expansion bolts for post-installed anchors. Use nonferrous-metal or hot-dip galvanized anchors and inserts at inside face of exterior walls and at floors.
C. Adhesives: Do not use adhesives that contain urea formaldehyde.
D. Adhesives: Use adhesives that meet the testing and product requirements of the California Department of Health Services' "Standard Practice for the Testing of Volatile Organic Emissions from Various Sources Using Small-Scale Environmental Chambers."

ARCHITECTURAL COUNTERTOPS AND BENCHES
KALERT | Consulting Group, LLC 06 41 13 - 2

Poudre School District
Poudre High School-Corridor Seating

January 12, 2022

PART 3 - EXECUTION

- 3.1 EXAMINATION
A. Examine joints indicated to receive joint sealants, with Installer present, for compliance with requirements for joint configuration, installation tolerances, and other conditions affecting joint-sealant performance.
B. Proceed with installation only after unsatisfactory conditions have been corrected.
3.2 INSTALLATION OF JOINT SEALANTS
A. General: Comply with joint-sealant manufacturer's written installation instructions for products and applications indicated, unless more stringent requirements apply.
3.3 CLEANING
A. Clean off excess sealant or sealant smears adjacent to joints as the Work progresses by methods and with cleaning materials approved in writing by manufacturers of joint sealants and of products in which joints occur.
3.4 PROTECTION
A. Protect joint sealants during and after curing period from contact with contaminating substances and from damage resulting from construction operations or other causes so sealants are without deterioration or damage at time of Substantial Completion. If, despite such protection, damage or deterioration occurs, cut out and remove damaged or deteriorated joint sealants immediately so installations with repaired areas are indistinguishable from original work.

END OF SECTION 079200

JOINT SEALANTS
KALERT | Consulting Group, LLC 079200 - 2

Poudre School District
Poudre High School-Corridor Seating

January 12, 2022

- 2.60 FABRICATION OF PLASTIC LAMINATE COUNTERTOPS AND BENCHES
A. Sand fire-retardant-treated wood lightly to remove raised grain on exposed surfaces before fabrication.
B. Fabricate countertops and benches to dimensions, profiles, and details indicated.
C. Complete fabrication, including assembly and hardware application, to maximum extent possible before shipment to Project site. Disassemble components only as necessary for shipment and installation. Where necessary for fitting at site, provide ample allowance for scribing, trimming, and fitting.
1. Notify Architect seven days in advance of the dates and times woodwork fabrication will be complete.
2. Trial fit assemblies at fabrication shop that cannot be shipped completely assembled. Install dowels, screws, bolted connectors, and other fastening devices that can be removed after trial fitting. Verify that various parts fit as intended and check measurements of assemblies against field measurements before disassembling for shipment.
D. Shop-cut openings to maximum extent possible to receive hardware, appliances, electrical work, and similar items. Locate openings accurately and use templates or roughing-in diagrams to produce accurately sized and shaped openings. Sand edges of cutouts to remove splinters and burrs.
E. Assembly: Shop assemble countertops and benches for delivery to site in units easily handled and to permit passage through building openings.
F. Fitting: When necessary to cut and fit on site, provide materials with ample allowance for cutting. Provide matching trim for scribing and site cutting.

PART 3 - EXECUTION

- 3.1 PREPARATION
A. Before installation, condition countertops and benches to average prevailing humidity conditions in installation areas.
B. Before installing countertops and benches, examine shop-fabricated work for completion and complete work as required.
C. Verify adequacy of backing and support framing.
D. Verify location and sizes of utility rough-in associated with work of this section. Coordinate installation with mechanical and electrical contractors who will be furnishing and installing plumbing and electrical work. Do not cover electrical outlets, devices, etc.
E. Do not proceed with fabrication or installation until unsatisfactory conditions or dimensions have been corrected.
3.2 INSTALLATION
A. Grade: Install countertops and benches to comply with same grade as item to be installed.
B. Assemble countertops and benches and complete fabrication at Project site to the extent that it was not completed in the shop.
C. Install countertops and benches level, plumb, true, and straight. Shim as required with concealed shims. Install level and plumb to a tolerance of 1/8 inch in 96 inches (3 mm in 2400 mm).
D. Scribe and cut countertops and benches to fit adjoining work, refinish cut surfaces, and repair damaged finish at cuts.

ARCHITECTURAL WOODWORK
KALERT | Consulting Group, LLC 06 41 13 - 3

Poudre School District
Poudre High School-Corridor Seating

January 12, 2022

SECTION 092216 - NON-STRUCTURAL METAL FRAMING

PART 1 - GENERAL

- 1.1 SUMMARY
A. Section Includes:
1. Non-load-bearing steel framing systems for interior gypsum board assemblies.
B. Related Requirements:
1. Section 092900 "Gypsum Board" for interior gypsum board assemblies.

PART 2 - PRODUCTS

- 2.1 MANUFACTURERS
A. Products: Subject to compliance with requirements, provide products by one of the following manufacturers:
1. Cemco, Inc.
2. Dale/Incor, Inc.
3. Dietrich Industries, Inc.
2.2 FRAMING SYSTEMS
A. Studs and Runners: ASTM C 645 and GA-216
1. Steel Studs and Runners: Galvanized sheet steel, C-Shape, with knurled faces, and finished in accordance with ASTM A123 G60 coating class.
a. Studs Minimum Base-Metal Thickness: 20 gauge studs
b. Runners: 20 gauge.
c. Depth: As indicated on Drawings.

PART 3 - EXECUTION

- 3.1 INSTALLATION, GENERAL
A. Installation Standard: ASTM C 754.
1. Gypsum Board Assemblies: Also comply with requirements in ASTM C 840 that apply to framing installation.
B. Install bracing at terminations in assemblies.

NON-STRUCTURAL METAL FRAMING
KALERT | Consulting Group, LLC 092216 - 1

Poudre School District
Poudre High School-Corridor Seating

January 12, 2022

- E. Anchor countertops and benches to anchors or blocking built in or directly attached to substrates. Secure with countersunk, concealed fasteners and blind nailing.
1. Use filler matching finish of items being installed.
F. Use appropriate attachments into CMU, blocking or studs at concealed locations for wall mounted components to support design loads.
G. Carefully scribe countertops and benches abutting other components, with maximum gaps of 1/32 inch. Do not use additional overlay trim for this purpose.
H. Cut countertops and benches to fit adjoining countertops and benches and refinish cut surfaces or repair damaged finish at cuts. Use filler strips for this purpose. Top and bottom filler pieces required for all scribes.
I. Countersink anchorage devices at exposed locations. Conceal with solid surface plugs to match surrounding material; finish flush with surrounding surfaces.
J. Secure countertop support frames with appropriate anchors for substrate. Locate accurately as shown on Drawings. Secure countertops to frames with concealed fasteners. At free standing locations, mount shear panels to frames to complete rigid installation.
K. Countertops and benches: Install without distortion.
1. Install countertops and benches with no more than 1/8 inch in 96-inch (3 mm in 2400-mm) sag, bow, or other variation from a straight line.
3.3 PROTECTION, ADJUSTING AND CLEANING
A. The countertops and benches installer shall advise the Contractor of final protection and maintained conditions necessary to ensure that the work will be without damage or deterioration at the time of acceptance.
B. Repair damaged and defective countertops and benches, where possible, to eliminate functional and visual defects; where not possible to repair, replace woodwork. Adjust joinery for uniform appearance.
C. Complete FINAL cleaning of all countertops and benches.

END OF SECTION 064116

ARCHITECTURAL COUNTERTOPS AND BENCHES
KALERT | Consulting Group, LLC 06 41 13 - 4

Poudre School District
Poudre High School-Corridor Seating

January 12, 2022

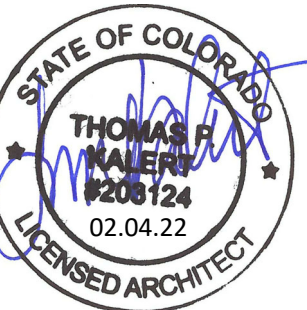
3.2 INSTALLATION OF WALL FRAMING

- A. Install framing system components according to spacings indicated, but not greater than spacings required by referenced installation standards for assembly types, and not greater than 16 inches o.c.
B. Install studs so flanges within framing system point in same direction.
1. Provide compressible filler behind studs at intersections with masonry walls.
2. Install furring as required for fire resistance rating indicated.
C. Installation Tolerances: Install suspension systems that are level to within 1/8 inch in 12 feet measured lengthwise on each member that will receive finishes and transversely between parallel members that will receive finishes.

END OF SECTION 092216

NON-STRUCTURAL METAL FRAMING
KALERT | Consulting Group, LLC 092216 - 2

KCG | LLC
KALERT | Consulting Group, LLC
2429 Stonecrest Drive
Fort Collins, Colorado 80521
tom@kalert.com



SHEET CONTENTS
PROJECT SPECIFICATIONS

POUDRE HIGH SCHOOL
LONG DRAW CREEK
HALLWAY IMPROVEMENTS



Table with columns: NO., BY, DATE, DESCRIPTION, REVISIONS. Includes a revision entry for A2.2 dated 02.04.22.

ISSUE FOR PERMIT

Poudre School District
Poudre High School-Corridor Seating

January 12, 2022

SECTION 092900 - GYPSUM BOARD

PART 1 - GENERAL

1.1 SUMMARY

- A. Section Includes:
 1. Interior gypsum board.
- B. Related Requirements:
 1. Section 092216 "Non-Structural Metal Framing" for non-structural framing and suspension systems that support gypsum board panels.

PART 2 - PRODUCTS

2.1 GYPSUM BOARD, GENERAL

- A. Size: 4 feet wide X maximum length available.
- B. All gypsum board products and accessories shall be formaldehyde-free and asbestos-free.
- C. Use post-industrial and post-consumer recycled gypsum board products with the highest level of recycled content readily available.

2.2 INTERIOR GYPSUM BOARD

- A. Manufacturers: Subject to compliance with requirements, provide products by one of the following:
 1. Georgia-Pacific Gypsum LLC.
 2. National Gypsum Company.
 3. USG Corporation.
- B. Abuse-Resistant Type: Manufactured to produce greater resistance to surface indentation and through-penetration (impact resistance) than standard, regular-type and Type X gypsum board.
 1. Core: 5/8 inch.

2.3 TRIM ACCESSORIES

- A. Interior Trim: ASTM C 1047.
 1. Material: Galvanized steel.
 2. Shapes:
 - a. J-Bead in locations as required by the drawings
 - b. Expansion Joints as required by the drawings.

GYPSUM BOARD
KALERT | Consulting Group, LLC

092900 - 1

Poudre School District
Poudre High School Corridor Seating

January 10, 2022

SECTION 096513 - RUBBER STAIR TREAD

PART 1 - GENERAL

1.1 SUMMARY

- A. Section Includes:
 1. Rubber Stair Treads.

PART 2 - PRODUCTS

2.1 RUBBER STAIR TREAD

- A. Roppe Corporation, USA. Resilient Stair Treads Standard: ASTM F 2169.
 1. Material Requirement: Type TS rubber, vulcanized thermoset.
 2. Surface Design: Squares
- B. Nosing Style: Square.
- C. Nosing Height: 2 inches
- D. Thickness: 0.18 inches
- E. Size: Lengths and depths
 1. 6 foot pieces, 13" deep
- F. Colors and Patterns: As selected by Architect from full range of industry colors.

2.2 INSTALLATION MATERIALS

- A. Trowelable Leveling and Patching Compounds: Latex-modified, portland cement based or blended hydraulic-cement-based formulation provided or approved by resilient-product manufacturer for applications indicated.
 1. Products: Wecrete95, or approved equal.
- B. Adhesives: Water-resistant type recommended by resilient-product manufacturer for resilient products and substrate conditions indicated.

PART 3 - EXECUTION

3.1 PREPARATION

- A. Prepare substrates according to manufacturer's written instructions to ensure adhesion of resilient products.

END OF SECTION 096513

RESILIENT BASE AND ACCESSORIES
KALERT | Consulting Group, LLC

096513 - 1

Poudre School District
Poudre High School-Corridor Seating

January 12, 2022

- 3. Products:
 - a. Dur-a-Bead products by USG Corporation, or equivalent by:
 - 1) Georgia Pacific
 - 2) National Gypsum

2.4 JOINT TREATMENT MATERIALS

- A. General: Comply with ASTM C 475/C 475M and GA 216
- B. Joint Tape:
 1. Interior Gypsum Board: Paper.
- 2. Products:
 - a. Sheetrock joint tape by USG Corporation, or equivalent by:
 - 1) Georgia Pacific
 - 2) National Gypsum
- C. Joint Compound for Interior Gypsum Board.
 1. Lime compound, All-Purpose joint and texturing compound, containing inert fillers and natural binders.
 2. Pre-mixed compounds shall be free of antifreeze, vinyl adhesives, preservatives, biocides and other slow-releasing compounds.
 3. Products:
 - a. Sheetrock brand joint compound by USG corporation, or equivalent by:
 - 1) Georgia Pacific
 - 2) National Gypsum

PART 3 - EXECUTION

3.1 APPLYING AND FINISHING PANELS, GENERAL

- A. Comply with ASTM C 840 and GA-216.
- B. Install panels with face side out. Butt panels together for a light contact at edges and ends with not more than 1/16 inch (1.5 mm) of open space between panels. Do not force into place.
- C. Locate edge and end joints over supports. Do not place tapered edges against cut edges or ends.
- D. Form control and expansion joints with space between edges of adjoining gypsum panels, and break framing behind control joints.
- E. Isolate perimeter of gypsum board applied to non-load-bearing partitions at structural abutments, except floors. Provide 1/4- to 1/2-inch- (6.4- to 12.7-mm-) wide spaces at these locations and trim edges with edge trim where edges of panels are exposed. Seal joints between edges and abutting structural surfaces with acoustical sealant.
- F. Attachment to Steel Framing: Attach panels so leading edge or end of each panel is attached to open (unsupported) edges of stud flanges first. Provide fasteners spaced per 2021 International Building Code requirements.

GYPSUM BOARD
KALERT | Consulting Group, LLC

092900 - 2

Poudre School District
Poudre High School Corridor Seating

January 10, 2022

SECTION 099113 - PAINTING

PART 1 - GENERAL

1.1 RELATED DOCUMENTS

- A. Drawings and general provisions of the Contract, including General and Supplementary Conditions and Division 01 Specification Sections, apply to this Section.

1.2 SUMMARY

- A. Section includes surface preparation and the application of paint systems on exterior and interior substrates. Finish all interior and exterior surfaces exposed to view, unless fully factory finished or indicated in this Section not to be finished. Schedule of Exterior and Interior Surface Painting Systems to be provided is located at the end of Part 3 Execution.
- B. Workmanship shall be first class throughout or work will be subject to rejection and refinishing at no additional cost to Owner.

PART 2 - PRODUCTS

2.1 MANUFACTURERS

- A. Manufacturers: Subject to compliance with requirements, provide products by one of the following:
 1. Diamond Vogel Paints.
 2. ICI Paints.
 3. Kwal Paint.
 4. PPG Architectural Finishes, Inc.
 5. Sherwin-Williams Company

2.2 PREPARATION

- A. Comply with manufacturer's written instructions and recommendations in "MPI Manual" applicable to substrates and paint systems indicated.

2.3 APPLICATION

- A. Apply paints according to manufacturer's written instructions and recommendations in "MPI Manual."
 1. Use applicators and techniques suited for paint and substrate indicated.
- B. Apply paints to produce surface films without cloudiness, spotting, holidays, laps, brush marks, roller tracking, runs, sags, ropiness, or other surface imperfections. Cut in sharp lines and color breaks.

2.4 INTERIOR PAINTING SCHEDULE

- a. D-V: DS 1541 Hide Plus Semi.
- B. Gypsum Board: Spot prime taped and spackled areas with primer before texturing.
 1. Primer: White, interior, latex-based primer, total dry film thickness not less than 1.2 mils.
 - a. D-V: DU-1507.
 2. First and Second Coats: Interior satin latex enamel, total dry film thickness not less than 2.8 mils.
 - a. D-V: DC-1541 Hide Plus.

END OF SECTION 099113

PAINTING
KALERT | Consulting Group, LLC

09 91 13 - 1

Poudre School District
Poudre High School-Corridor Seating

January 12, 2022

- G. Tolerances: Maximum acceptable variation from flat surface is 1/16 inch per foot and 1/8 inch in 10 feet.
- H. Apply sealants where indicated, and only after gypsum board has been primed.

3.2 APPLYING INTERIOR GYPSUM BOARD

- A. Install interior gypsum board in locations, as indicated in accordance with the requirements of Chapter 25 of the 2021 International Building Code.
- B. Single-Layer Application:
 1. On partitions/walls, apply gypsum panels horizontally (perpendicular to framing) unless otherwise indicated, and minimize end joints.
 2. Fastening Methods: Apply gypsum panels to supports with steel drill screws.

3.3 INSTALLING TRIM ACCESSORIES

- A. General: For trim with back flanges intended for fasteners, attach to framing with same fasteners used for panels. Otherwise, attach trim according to manufacturer's written instructions.
- B. **Control Joints: Per the drawings.**
- C. Interior Trim: Install in the following locations:
 1. J-Bead and specialty shapes: Where partition meets dissimilar materials, and where indicated.

3.4 FINISHING GYPSUM BOARD

- A. General: Treat gypsum board joints, interior angles, edge trim, control joints, penetrations, fastener heads, surface defects, and elsewhere as required to prepare gypsum board surfaces for decoration. Promptly remove residual joint compound from adjacent surfaces.
- B. Prefill open joints and damaged surface areas.
- C. Apply joint tape over gypsum board joints, except for trim products specifically indicated as not intended to receive tape.
- D. Gypsum Board Finish Levels: Finish panels to levels indicated below and according to ASTM C 840:
 1. Level 4: At panel surfaces that will receive additional finish material layers.
 - a. Tape, fill and sand joints, edges and corners to produce smooth surface ready to receive finish.
 - b. Feather coats onto adjoining surfaces so camber is 1/32 inch maximum.
 - c. Primer and its application to surfaces are specified in Section 099123 "Interior Painting."

GYPSUM BOARD
KALERT | Consulting Group, LLC

092900 - 3

Poudre School District
Poudre High School-Corridor Seating

January 12, 2022

SECTION 092900 - GYPSUM BOARD

PART 1 - GENERAL

1.1 SUMMARY

- A. Section Includes:
 1. Interior gypsum board.
- B. Related Requirements:
 1. Section 092216 "Non-Structural Metal Framing" for non-structural framing and suspension systems that support gypsum board panels.

PART 2 - PRODUCTS

2.1 GYPSUM BOARD, GENERAL

- A. Size: 4 feet wide X maximum length available.
- B. All gypsum board products and accessories shall be formaldehyde-free and asbestos-free.
- C. Use post-industrial and post-consumer recycled gypsum board products with the highest level of recycled content readily available.

2.2 INTERIOR GYPSUM BOARD

- A. Manufacturers: Subject to compliance with requirements, provide products by one of the following:
 1. Georgia-Pacific Gypsum LLC.
 2. National Gypsum Company.
 3. USG Corporation.
- B. Abuse-Resistant Type: Manufactured to produce greater resistance to surface indentation and through-penetration (impact resistance) than standard, regular-type and Type X gypsum board.
 1. Core: 5/8 inch.

2.3 TRIM ACCESSORIES

- A. Interior Trim: ASTM C 1047.
 1. Material: Galvanized steel.
 2. Shapes:
 - a. J-Bead in locations as required by the drawings
 - b. Expansion Joints as required by the drawings.

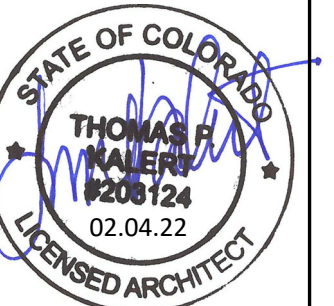
GYPSUM BOARD
KALERT | Consulting Group, LLC

092900 - 4

GYPSUM BOARD
KALERT | Consulting Group, LLC

092900 - 4

KCG | LLC
KALERT | Consulting Group, LLC
2429 Stonecrest Drive
Fort Collins, Colorado 80521
tom@kalert.com



SHEET CONTENTS
PROJECT SPECIFICATIONS

POUDRE HIGH SCHOOL
LONG DRAW CREEK
HALLWAY IMPROVEMENTS



NO.	BY	DESCRIPTION	DATE

ISSUE FOR PERMIT
DRAWN BY: KCG
CHECKED BY: KCG
DATE: 02.04.22
SHEET NO.: A2.3
REVISIONS