



Community & Business Partner Engagement Forum

Poudre School District | 2-16-22



Agenda

Introduction

- Recognizing who's here
- Gratitude
- Purpose of quarterly meetings

Information

- Priority areas and work groups
 - Data
 - What PSD is doing now
 - Work group reports
- Next steps and possibilities for support

Discussion

- Discussion questions

Follow Up

- Feedback & Engagement
- Work groups
- Future Meetings





Welcome to our Partners who RSVP'd

Organizations Represented

- Bohemian Foundation
- Canvas
- CareerWise
- Community Foundation of NoCo
- Cross Country Mortgage
- CP2 Law
- Colorado State University
- Fort Collins Chamber of Commerce
- Front Range Community College
- Larimer County
- Loveland Chamber
- Museum of Discovery
- OtterCares
- PSD, BOE, Foundation
- Poudre Fire Authority
- Resident Real Estate
- SummitStone Health
- The Family Center / La Familia
- United Way
- Verizon Wireless
- Woodward

Tanya Alcaraz
Robert Beauchamp
Bill Becker
Stephanie Bennett
Derek Bergsten
Caroline Bunn
Ruben Chacon
Kimberly Chambers
Linda Crum
Zach Ducharme
Sydney Faulkner
Theresa Fightmaster
Scott Hapner
Rebekah Harvey
Shannon Hein

Blanche Herron
Allison Hines
Tyrell Hirschert
Ann Hutchison
Kevin Jones
Kelly Kappel
SeonAh Kendall
Lauren Leary
Matt Liberati
Kelsey Lyon
Amy MacNaughton
Sara Maranowicz
Sarah Meuli
Yvonne Myers
Nancy Patton

Robert Petterson
Jodie Riesenberger
Kelly Robenhagen
Jean Runyon
Chris Schmidt
Emily Seems
Jacob Stewart
Christa Timmerman
Kristin Todd
Wade Troxell
Laura Valdez
Maggie Walsh
Cheryl Zimlich



PSD Cabinet

Brian Kingsley

Scott Nielsen

Traci Gile

Dave Montoya

Matt Bryant

Brett Larsen

Sarah Siple & Dan Starke

Madeline Noblett

Marlena Gross-Taylor

Lauren Hooten

Autumn Aspen

Superintendent

Assistant Superintendent, Secondary Schools

Assistant Superintendent, Elementary Schools

Executive Director of Finance

Executive Director of Operations

Executive Director of Human Resources

Interim Executive Director of Information Technology

Executive Director of Communications

Chief Equity & Academic Officer

Chief of Staff

Legal and Policy Council



Your PSD Hosts and Facilitators



Brian Kingsley

Superintendent



Lauren Hooten

Chief of Staff



Madeline Noblett

Executive Director of
Communications



Nick Peterson

Community & Business
Development Coordinator



Gratitude





Purpose of Quarterly Engagement Forums



Keep you informed of what we are doing



Discuss ways to collaborate to support our students



Gather your input



Report on work group efforts



PSD Priorities and Work Groups



Graduating With Options

Scott Elias

Director of Career & Innovation

Tanya Alcaraz

Assist. Director of Career & Innovation



Literacy Practices

Robert Beauchamp

Director of Curriculum, Instruction, Assessment

Butterscotch Culhane

Literacy Curriculum Facilitator

Kelly Burns

Literacy Curriculum Facilitator



Mental Health & Wellness

Ruben Chacon

Director of Student Services

Tyrell Hirchert

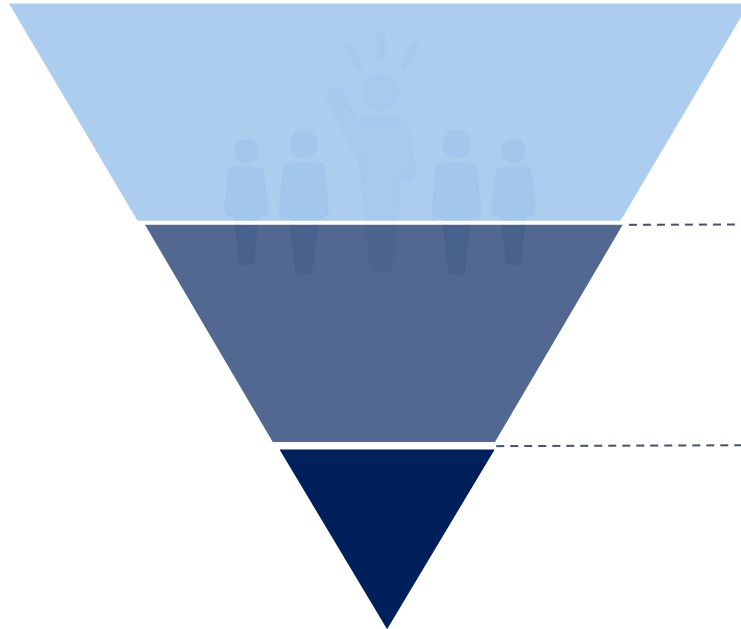
Mental Health & Prevention Coordinator

Theresa Fightmaster

PSD Counseling Coordinator



Work Group Potential Outcomes



- Information
- Questions
- Connections and points of contact

- Ideation
- Targeted contributions
- On-ramp to committees and other involvement

- PSD Cabinet level proposals
- PSD-community partnerships



Graduating With Options

January 18th, 2022 Work Group Summary



Facilitators

Scott Elias

Director of Career & Innovation

Tanya Alcaraz

Assist. Director of Career & Innovation



60 minutes



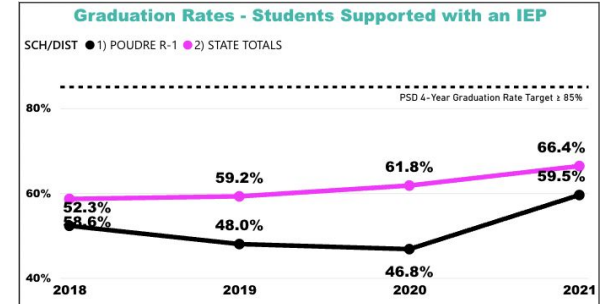
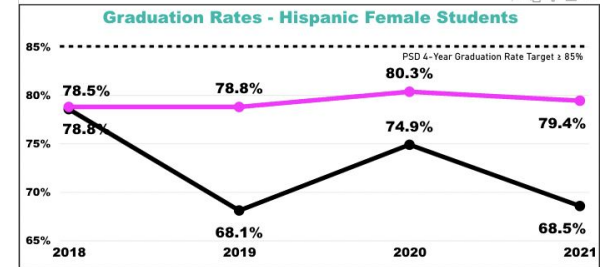
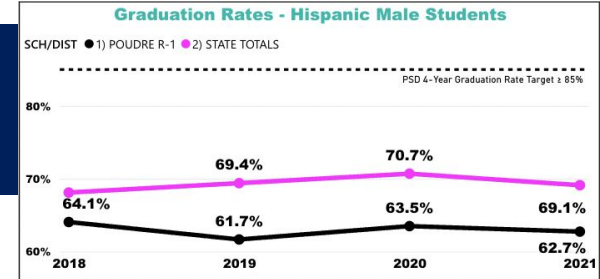
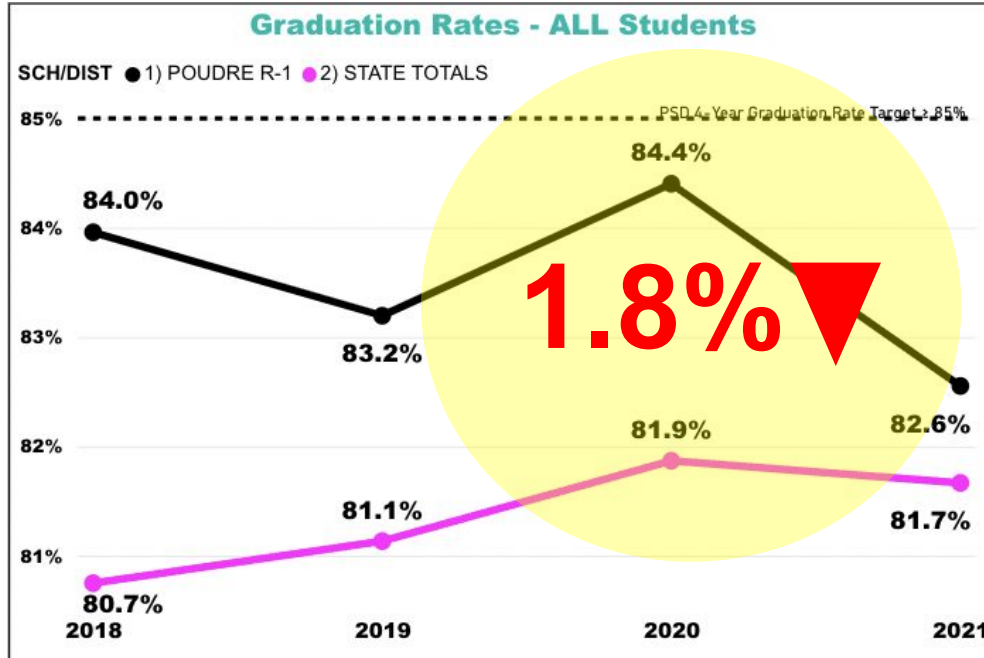
35 total attendees





Graduating With Options

Current state and the problems we are trying to solve





Graduating With Options

What we are doing now

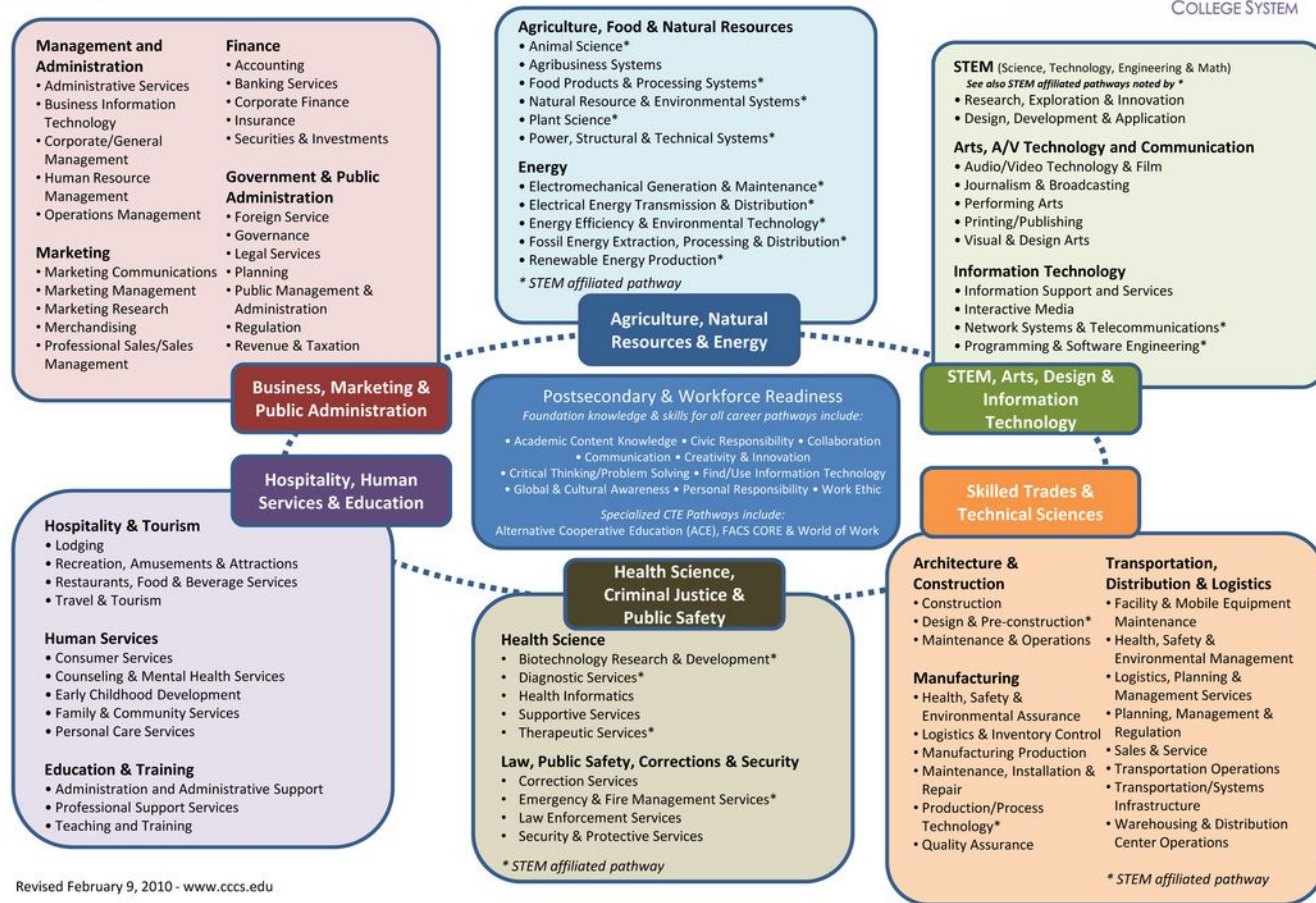
- Engage in ARPA process in designing Northern Colorado Future Ready Campus.
 - Engage community and business partners
- Continue to onboard business partners into Xello and expand Work-Based Learning Opportunities in our region.
- Clarify and simplify options for students.
 - psdfutureready.org
 - Increase options for career exploration at the middle school level.



Colorado Career Cluster Model



COLORADO COMMUNITY
COLLEGE SYSTEM





Literacy Work Group Summary

January 18th, 2022



Facilitators

Robert Beauchamp

Director of Curriculum

Butterscotch Culhane

Literacy Curriculum Facilitator

Kelly Burns

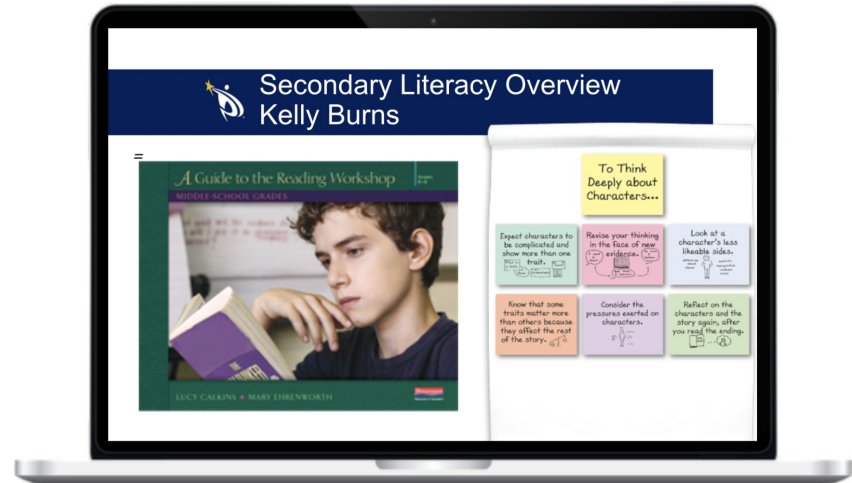
Literacy Curriculum Facilitator



60 minutes



21 total attendees

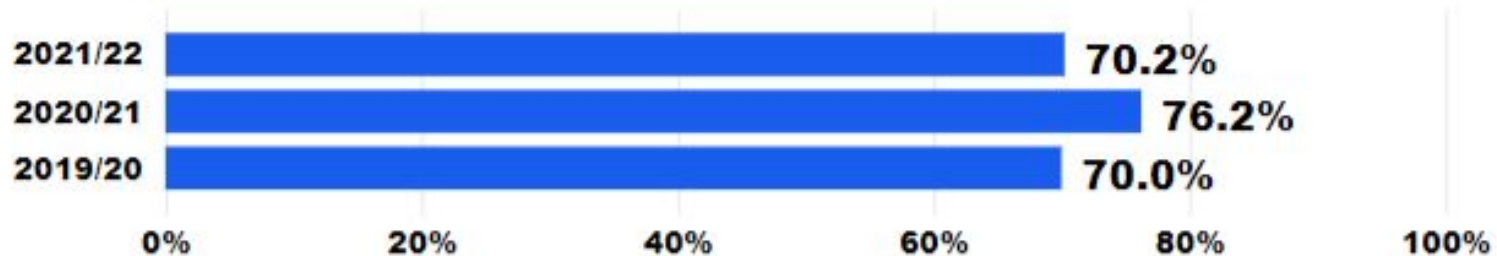




District Literacy Data - MAP

Fall MAP Reading Data Grades 2-8 All Students:

Fall/BOY % At/Above Grade Level Expectations





District Literacy Data Acadience 2021-22

WBB= Well Below Benchmark

BB= Below Benchmark

B= Benchmark

AB= Above Benchmark

Poudre K-3 Movement-Composite Scores





Literacy

What we are doing now

Elementary

- Teacher professional development in the Science of Reading
- Targeted assessments to diagnose and respond to reading delays
- Comprehensive K-12 Literacy Review

Secondary

- Growing the Adolescent Reader (in reading acquisition skills and proficiencies)
- Expanding Agency with Tools and Structures of a Readers Workshop
- Implementing and Evolving Culturally Sustaining and Relevant LITERACY Pedagogies
- Comprehensive K-12 Literacy Review



Literacy

Work group feedback and discussion summary

What might you and/or your organization contribute to support the literacy practices in PSD?

What might your entity/agency contribute toward engaging students and/or PSD adults in literacy or how might you partner? (add your name and organization)

Offer opportunities for presenting and writing.
YMyers - Chamber

Idea: share out how community partnerships are successfully literacy focused -- more nonprofits will support, but may not know how.

PSDF can support via teacher grants or fundraising for specific literacy needs.

We incorporated BE Ready in our new employee orientation at Columbine. Could the literacy ideas/concepts/efforts be included with employees at businesses. YMyers

Keeping PSD's Literacy goals in mind in various sector partner, CTE, and workforce meetings, with the goal of building awareness and engagement w/ community partners.
-Nick

Group 1- Robert, Sara M, Yvonne M, Sylvia, Nick, Rebeka, Ann

Group 2- Butterscotch, Traci Gile, Delirne Sullivan, Michele Christensen

Group 3- Kelly

Idea: offer literacy training opportunities to community partner staff; professional training seems key!
-Sara Maranowicz

Use technology to share with businesses to learn from or provide feedback. YMyers

Hosting Poetry Slams.
Robert B. PSD

How to communicate the work the PSD is doing for students in Literacy. Y. Myers

GIVE STUDENTS AUTHENTIC AUDIENCES

group or 1:1 learning (UWLC)

for offsite learning w tech capacity (UWLC)

providing book rich environments/access to books-Housing Catalyst

Space for PSD professionals to use to reach families in affordable housing

we keep bringing K in a fe for reading learning in school?

Main themes:

Nonprofits supporting literacy outcomes

Provide book rich environments

Offer literacy training to community partner staff and invite them into schools

Opportunities for exhibition of learning / authentic audiences



Mental Health Work Group Summary

February 3rd, 2022



Facilitators

Ruben Chacon

Director of Student Services

Tyrell Hirchert

Mental Health & Prevention Coordinator

Theresa Fightmaster

PSD Counseling Coordinator



60 minutes



22 total attendees

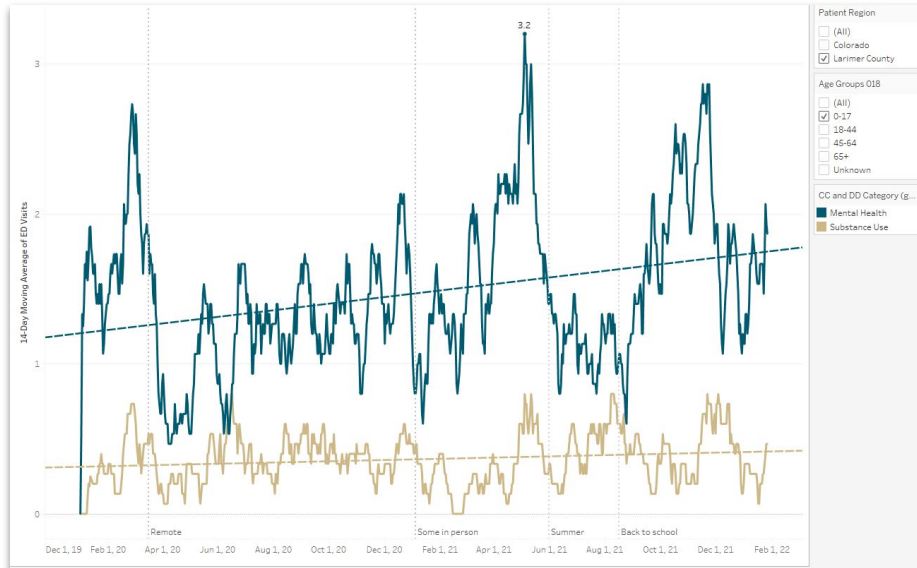




Mental Health & Wellness

Current state and the problems we are trying to solve

Youth mental health and substance use emergency department visits



PSD Mental Health Specialist Data

- Suicide Risk Assessments

- 2017/2018 - 313
- 2018/2019 - 482
- 2019/2020 - 301
- 2020/2021 - 169

*Fall Semester 2021 - 254



Mental Health & Wellness

What we are doing now

- **Mental Health and Suicide Prevention Policy**
 - Suicide prevention, intervention, and post-care
 - Required training on suicide prevention, including education about mental health and warning signs or risks
- **Enhance Social & Emotional Learning (SEL) K-12**
 - SEL Advisory Team
 - Best practices for delivering SEL
 - Assessing SEL
 - District supported SEL Curriculum
- **Community Partnerships**
 - MOUs to clarify role and function of mental health community team members
 - Strengthen communication and information sharing
 - Enhance youth-driven and family-guided services



Mental Health & Wellness

Work group feedback and discussion summary

What might you and/or your organization contribute to support the Mental Health priorities in PSD?

What might you and/or your organization contribute to support the Mental Health priorities in PSD?

Please include your name and organization on your note.

PSD Foundation could assist with raising money and grants for the initiative - Chris S. PSD Foundation

Use student feedback/priorities as a list for us to follow in terms of what actions we take. Continue to bring in youth voice via forums, etc.

Develop templates and processes that can be used and duplicated with other partners for greater efficiency in establishing services

Get connected to others funders to support on-going work, such as Community Foundation

Ruben Chacon's breakout room

Continue working towards a formal partnership to provide services, including on-going talks to develop MOUs, clarify referral processes, embed care coordination, etc. - Kelly R., SummitStone Health Partners

Getting SummitStone care coordinators hired and trained, soon will be ready to partner with PSD. - Kelly R.

Theresa Fightmaster's breakout room

Mentioned the for partnerships. Have defined a way around that

Tyrell Birchert's breakout room

Early Childhood Membership for all families enrolled in PSD and Thompson School district EC Programs - Shannon Quist, FCMod

- Blake, CSU

Internships/Volunteer Opportunities at FCMod, thank you Maggie - Shannon Quist, FCMod

hours/skills/supervision.

Main themes:

Braided Funding Strategies

Interagency Collaboration, Coordination, & Agreements

Local Talent Pipeline

Mental Health Crisis Support



Full group discussions

Poudre School District |



Jamboard how-to and prompts

Instructions:

1. Follow the jamboard link in the chat.
https://jamboard.google.com/d/1Z1svO7Xe8i8Sm3AoNuEw_g_07gz6fvLHrjlozFZ6HgQ/edit?usp=sharing
2. Consider the prompts. We will spend around 5-10 minutes on each slide.
3. Add sticky notes and/or raise your hand and unmute to chat.



Points of Contact



Graduating With Options

Scott Elias

Director of Career & Innovation
selias@psdschools.org



Literacy Practices

Robert Beauchamp

Director of Curriculum, Instruction, Assessment
rbeaucha@psdschools.org



Mental Health & Wellness

Ruben Chacon

Director of Student Services
rchacon@psdschools.org



Next Steps for Community & Business Development

- Done
- In Progress
- Not Started



Drastically Improve PSD Partnership Website and Communication

- Archive of forums and work groups
- Forum and work group sign-up form
- Clear on-ramps and points of contact
- Collaboration with PSD Finance Dept. to track and quantify partnership activity data
- Public-facing community asset and collaboration directory, plus available data on partnership activities
- User-friendly annual report and summary of partnership activities



District Community Partnership Needs Assessment (principals +)

- Help assure focus, relevance, and connection to dynamic needs across PSD



Increased Frequency and Focus of Work Groups Between Quarterly Forums

- Secretarial support for scheduling
- New format/protocols, clearer data, viable and supported community asks
- Partner assistance convening (physical space, process advisement, convening meetings)
- Possible direct project groups to advance proposals to PSD cabinet



Follow Up

- Follow up email from Nick
- Who should be here who isn't here?
- Work Groups between meetings (invites coming soon)
 - If you haven't signed up for a work group, do so here:
 - <https://forms.gle/zT6iqXn9hRow8PDo9> (Link in chat)
- Next meeting: **April 20, 2022**